



## STAINLESS STEEL ADD-A-TIER DRAWERS

Fits Under 24", 30" and 36" Wide Open Base Work Tables!

### FEATURES:

Units come Fully Assembled!

Stainless Steel Drawers feature **SHD Series Drawers** with Integral drawer slides & removable stainless steel drawer inserts. Includes 2 or 3 drawers with 2 Concealed Side Panels (See Photos). Drawer "Safety Stop" tab. Mounts from underside of Open Base Table with Included Hardware.

### CONSTRUCTION:

All TIG welded.

### MECHANICAL:

Roller bearing slides, drawer enclosure and removable drawer inset. Self closing drawer with noise control.

### MATERIAL:

Heavy gauge type 430 series stainless steel.



NSF

**SHIPPED FULLY ASSEMBLED!**

ADT-3-2020 SERIES SHOWN  
(Table not included)

### INCLUDES 2 CONCEALED SIDE PANELS



2 Drawer Concealed Panel  
Model ADT-2-2020 Shown



3 Drawer Concealed Panel  
Model ADT-3-2020 Shown



Rear View of Stacked Drawers  
Drawer Seams Exposed

Model #	Description	Weight
ADT-2-2020	2 Tier Drawers	87 lbs.
ADT-3-2020	3 Tier Drawers	105 lbs.
ADT-3-2015	3 Tier Drawers	85 lbs.

## STAINLESS STEEL

# FACTORY INSTALLED "SHD SERIES" TIER DRAWERS

(FACTORY INSTALLATION ONLY)

### FEATURES:

3-Tier Drawers factory installed. 1 5/8" diameter tubular stainless steel legs & gussets. 1" adjustable stainless steel bullet feet. Stainless Steel Drawers feature **SHD Series Drawers** with Integral Drawer Slides & removable stainless steel drawer inserts. Drawer "Safety Stop" tab.

### CONSTRUCTION:

All TIG welded.

### MECHANICAL:

Roller bearing slides, drawer enclosure and removable drawer inset. Self closing drawer with noise control.

### MATERIAL:

Heavy gauge type 430 series stainless steel.

**New 4 Tier Unit Offers  
33% Greater Storage, within the  
Same Overall Dimension!**

**3 OR 4 TIERS  
AVAILABLE**



TA-38 SHOWN

Model #	Description	Weight
TA-38	3-Tier Drawers	130 lbs.
TA-384	4-Tier Drawers	165 lbs.

For Tier Drawers on 24" Wide Enclosed Base Tables,  
Add **TA-380** (Drawers will be 20" x 15" x 5")



Customer Service Available To Assist You **1-800-645-3166** 8:30 am - 8:00 pm E.S.T.

Email Orders To: [customer@advancetabco.com](mailto:customer@advancetabco.com). For Smart Fabrication™ Quotes, Email To: [smartfab@advancetabco.com](mailto:smartfab@advancetabco.com) or Fax To: 631-586-2933

**NEW YORK**  
Fax: (631) 242-6900

**GEORGIA**  
Fax: (770) 775-5625

**TEXAS**  
Fax: (972) 932-4795

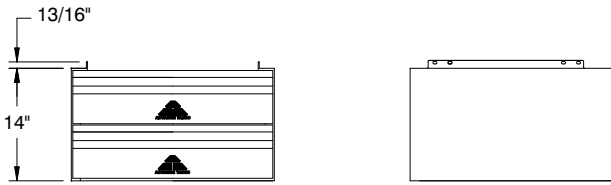
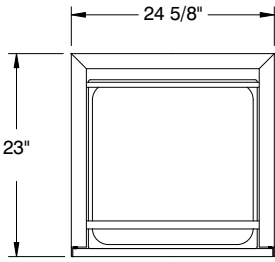
**NEVADA**  
Fax: (775) 972-1578

# DETAILS and SPECIFICATIONS

TOL ± .500"

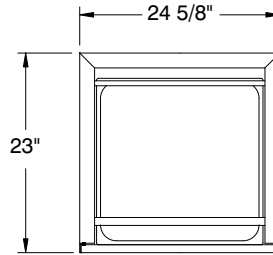
ALL DIMENSIONS ARE TYPICAL

## ADT-2-2020

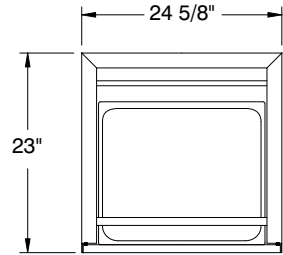


## ADT-3-2015 ADT-3-2020

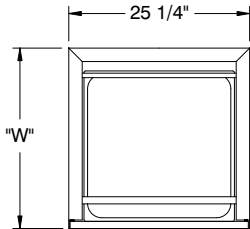
### TOP VIEW OF ADT-3-2020



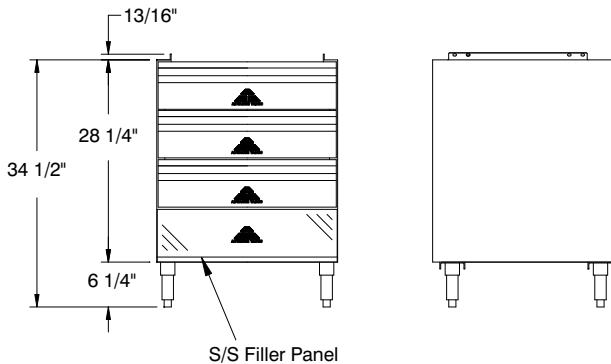
### TOP VIEW OF ADT-3-2015



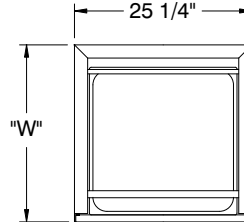
## TA-38 THREE TIER UNIT



"W" Dimension is Based on Table Width



## TA-384 FOUR TIER UNIT



"W" Dimension is Based on Table Width

