

# MDT5N25 – TouchFree<sup>®</sup> Ice Machine / Dispenser

## Nugget Ice Machine / Dispenser



### Features

Makes and dispenses soft, chewable nugget ice.

Sleek, european design with attractive rounded corners and informative instruction labels.

Up to 25% less fan noise allows installation of the unit in the quietest hallways.

Improved dispensing with easier access and room for most containers.

TouchFree<sup>®</sup> actuation provides convenient one-hand operations and eliminates the risk of cross contamination.

Flexible utility location.

### 24 Hour Volume Production

Air Cooled		Water Cooled	
70°F/21°C 50°F/10°C lb/kg	Air Water	90°F/32°C 70°F/21°C lb/kg	70°F/21°C 50°F/10°C lb/kg
523/237		409/186	525/239
			455/207

### Nugget Ice



The Original  
Chewable Ice™  
Easy to chew, cools  
drinks rapidly.



### Sanitary One Hand Operation



Easily fills various sizes and types of containers.

### Warranty

- 2 years parts and labor on all components.
- 5 years parts on compressor.

Warranty valid in North, South & Central America.  
Contact factory for warranty in other regions.

### Ice Vending Capacity

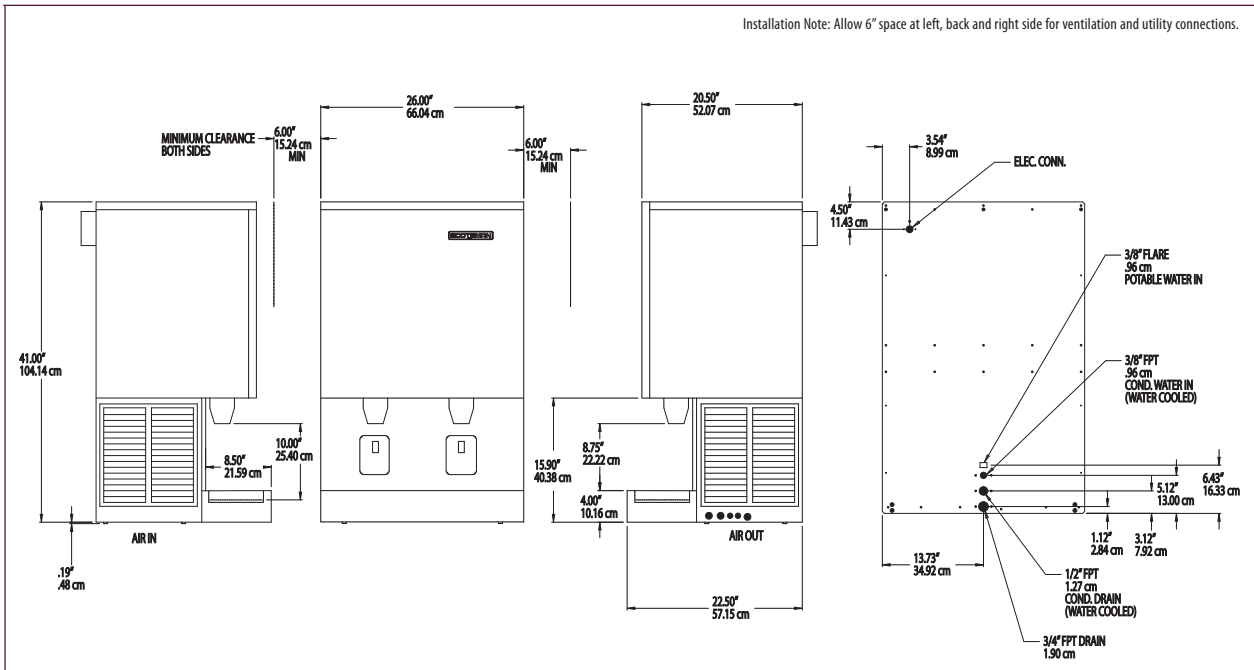
Peak Vends Per Hour\*

Number of Vends Per Hour from Full Bin + Recovery = Total Vends

Model Number	Bin Storage lb./kg.	1 Hour Recovery Cap lb./kg.	2 fl. oz.		Total 2 fl. oz. Vends	4 fl. oz.		Total 4 fl. oz. Vends	6 fl. oz.		Total 6 fl. oz. Vends	8 fl. oz.		Total 8 fl. oz. Vends
			Bin	Recovery		Bin	Recovery		Bin	Recovery		Bin	Recovery	
MDT5N25A	26/12	22/10	416	+ 349	= 765	208	+ 175	= 382	139	+ 116	= 225	104	+ 87	= 191
MDT5N25W	26/12	22/10	416	+ 350	= 766	208	+ 176	= 383	139	+ 117	= 226	104	+ 88	= 192

1 lb. apx. = 32 fl. oz.

\*Based on 70° Air and 50° Water Temperatures



## Specifications

Model Number	Condenser Unit	Storage Capacity lb/kg	Basic Electrical Volts/Hz/Phase	Max. Fuse Size or HACR Circuit Breaker (amps)	Circuit Wires	Min. Circuit Ampacity	Energy Consumption kWh/100 lb (45.4 kg) 90°F(32°C)/70°F(21°C)	Water Usage Gallons/100 lb (liters/45.4 kg)	
								Potable 90°F(32°C)/70°F(21°C)	Condenser 90°F(32°C)/70°F(21°C)
MDT5N25AS-1	Air	26/12	115/60/1	30	2	20.7	5.4	12/45.5	-
MDT5N25WS-1	Water	26/12	115/60/1	25	2	19.4	4.0	12/45.5	97.0/367.8

All units are stainless steel. Not designed for outdoor installations.  
Refrigerant: R-404a

## All Models

Dimensions (W x D x H):

Unit:  
26" x 22.5" x 41"  
(66 x 57.2 x 104 cm)

Shipping Carton:  
30" x 24" x 46"  
(76.2 x 61 x 116.8 cm)

Shipping Weight:  
260 lb / 118 kg

## Accessories

Model Number	Description
DMS21S-B	Machine Stand for MDT5N25, MDT5N40
KWB3	Wall Mounting Kit for MDT5N25, MDT5N40
KSP5	Splash Panel Kit for MDT5N25, MDT5N40
KPC-MDT	Portion Control Kit for MDT3, MDT4, MDT5 & MDT6
KTPS-MDT	Tamper Proof Screw Kit (including tool) to convert 1 MDT Dispenser

\* Scotsman recommends all ice machines have water filtration. See Scotsman Sanitation Matrix for details.

## Operating Requirements

	Minimum	Maximum
Air Temperatures	50°F (10°C)	100°F (38°C)
Water Temperatures	40°F (4.4°C)	100°F (38°C)
Remote Cond. Temps	-20°F (-29°C)	120°F (49°C)
Water Pressures	20 PSIG (1.4 bar)	120 PSIG (5.5 bar)
Electrical Voltage	-5%	+10%

Specifications and design are subject to change without notice.

Scotsman Ice Systems • 775 Corporate Woods Parkway • Vernon Hills, IL 60061

1-800-SCOTSMAN

Fax: 847-913-9844

E-mail: customer.relations@scotsman-ice.com

www.scotsman-ice.com

© 2012 Scotsman Ice Systems.

SIS-SS-DIS-MDT5N25 06-12