

[L-Series]

**Reach-In Solid
Swing Door Freezer**

BASF1



WARRANTY

- 2 Years Parts and Labor, 5 Years on Compressor in USA



Conforms to NSF/ANSI 7(ETL)

223 W. Rosecrans Ave. Gardena, CA. 90248 USA

Tel : 1.866.677.8500 / 310.808.0102
Fax : 310.808.0242 / 310.808.0262

BASF1 Bottom Mount Reach-In Solid Swing Door Freezer

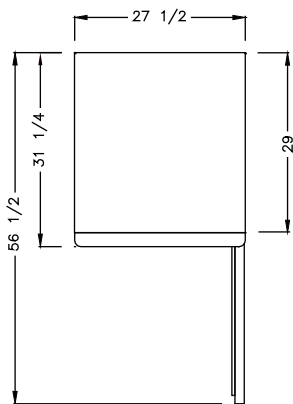
L-Series

Product Specification

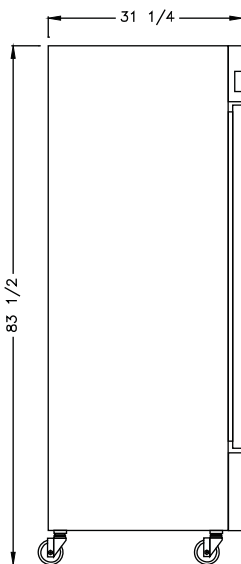
MODEL NAME	BASF1
Product Description	Freezer
Capacity(Cu. ft.)	23
Exterior Dimensions(WxDxH)	27 1/2" x 31 1/4" x 83 1/2"
Net Weight(lbs)	293
Foot	Caster 4
Door Type	1 Door (Swing)
Door Stopper	Equipped (120°)
Shelves	4 ea
Input	AC 115V / 60Hz
Amps	8.5 A
Compressor(Hp)	1/2 HP
Refrigerant	R-404a
Range of Temperature	-20~-10°F
Easy access for Service	Sliding Condensing Unit

* BLUE AIR has the right to change specifications without further notice.

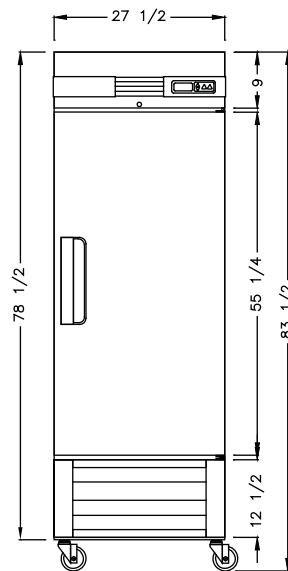
- DOOR OPEN WARNING ALARM
- DURABLE USAGE DOOR GASKET
- HIGH DENSITY CELL POLYURETHANE INSULATION(CFC-FREE)
- ENERGY STAR RATED
- CONFORMS TO NSF/ANSI 7(ETL)
- FIELD DOOR REVERSIBLE(LEFT HINGE)



[TOP VIEW]



[SIDE VIEW]



[FRONT VIEW]

- **BOTTOM MOUNT COMPRESSOR**
The bottom mount compressor structure is placed in the coolest possible area to provide quick and easy service.
- **STAINLESS STEEL INTERIOR AND EXTERIOR**
The excellent quality of stainless steel minimizes dents, scratches and rust. It also maximizes and bright smooth sheen.
- **DIGITAL TOTAL MONITORING SYSTEM**
Offers an automatic door alarm system, easy temperature adjustment and a simple controlling defrost cycle.
- **FABRIC CONDENSATION KIT**
Absorbs the water from the defroster and evaporates naturally.
- **RECESSED DOOR HANDLES** - Our patented smooth and elegant door handles prevent shipping damage and handle breakage.
- **ROUNDED ELEGANT CORNERS**
- **SELF-CLOSING AND STAY DOOR OPEN**
Doors remain open at 120° and automatically-close at 96°.
- **DOOR LOCKS** - Each door is equipped with individual locks.
- **OVERSIZED REFRIGERATION SYSTEM**
- **AIR GUARD ON REAR WALL** - Enable to ensure proper air flow and cooling
- **INCANDESCENT LIGHT INTERIOR**
- **5" DIAMETER SWIVEL CASTERS WITH FRONT BRAKES**
- **ACCOMMODATES FULL SIZE BUN SHEET PANS**
- **1" ADJUSTABLE SHELVING HEIGHTS**



WARRANTY

- 2 Years Parts and Labor, 5 Years on Compressor in USA

BLUE AIR Commercial Refrigeration Inc.

223 W. Rosecrans Ave.
Gardena, CA. 90248 USA

Tel : 1.866.677.8500 / 310.808.0102
Fax : 310.808.0242 / 310.808.0262

<http://www.Blueairinc.com>
Email : info@blueairinc.com