

REFRIGERATION RACKS

Reach-In / Walk-In

ALUMINUM OR STAINLESS
CONSTRUCTION

Item No. _____

Quantity _____

Job Name _____

Spec No. _____

Applications:

Multi-purpose racks for holding and storing 18" x 26" pans. Designed for both cooler and freezer applications.

Construction:

RIR Series: Heavy duty, high tensile extruded aluminum. Type 6063-T5 alloy. Lifetime guarantee against rust. **RIW Series:** Plated steel wire pan slides are secured to the tubular frame. **W Series** is available in aluminum or stainless.

Tray Slides:

RIR and WA Series are 1"X 1-1/2" extruded aluminum angle heli-arc welded to frame. Bottom load ledge design. **RIW Series:** Lip load design.

Frame and Cross Supports:

Vertical and horizontal frames sections are 1" extruded aluminum tubing.

Casters:

WA and WS Series: 5" diameter, full swivel design. Non-marking polyurethane wheel. Casters are securely bolted to frame to facilitate replacements.

Spacing/ Pan Accommodations: See tabulation.

Options:

- 011 - Caster Break
- 009 - Pan Stop - Aluminum
- 015 - Pan Stop - Web Strap
- /BA - Solid Bottom - Aluminum
- 008 - Sway Bracing
- /A - Solid Top

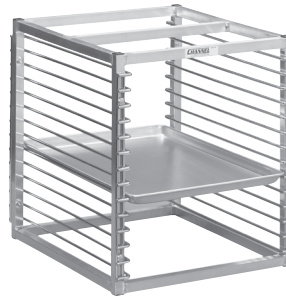
Additional Options Available



RIR-16



RIR-7



RIW-13



WA03

Model	Spacing/ Capacity	H	W	D	Weight
RIR-7	FL 3"/ 7 Pans	23"	20 1/2"	23"	13
RIR-10	FL 2"/ 10 Pans	23"	20 1/2"	23"	13
RIR-16	FL 3"/ 16 Pans	51"	20 1/2"	23"	23
RIR-24	FL 2"/ 24 Pans	51"	20 1/2"	23"	23

Model	Spacing/ Capacity	H	W	D	Weight
RIW-13	FL 1 1/2"/ 13 Pans	23"	20 1/2"	25"	27
RIW-29	FL 1 1/2"/ 29 Pans	51"	20 1/2"	25"	65

Custom Sizes Available

ALUMINUM		STAINLESS		Spacing/Capacity	H	W	D
Model	Wt.	Model	Wt.				
WA02	43	WS02	70	FL 2"/ 27 Pans	64"	20 1/2"	26"
WA03	35	WS03	53	FL 3"/ 18 Pans	64"	20 1/2"	26"
WA04	31	WS04	44	FL 4"/ 13 Pans	64"	20 1/2"	26"
WA05	29	WS05	40	FL 5"/ 11 Pans	64"	20 1/2"	26"

55 Channel Drive • Port Washington, NY 11050-2216
 8891 NW 102nd Street • Medley, FL 33178
 Tel: 516-944-6271 • Fax: 516-944-0625 • Toll Free: 866-712-7283
 www.channelmfg.com • Email: sales@channelmfg.com

