

SteamCraft® Power 10

TWO COMPARTMENT FLOOR MODEL DESIGN
GAS STEAM GENERATORS
240M BTU, 24" WIDE MODULAR DESIGN

MODEL: 24-CGP-10

Cleveland Standard Features

- Pressureless cooking permits doors to be opened during operation. Capacity for up to ten 12" x 20" x 2½" deep Cafeteria pans, five each compartment.
- **Exclusive PowerPak Gas Steam Generator:** High Efficiency Forced Air (Power Burner) Gas Fired Boiler has 240,000 Btu's Input, produces 180 lbs of steam per hour. 10-12 PSI operating generator pressure. Steam generator is equipped with a High-Limit Pressure Safety Switch, 15 psi Safety Valve and a Secondary Low Water Shut Off Safety standard. Fully insulated rear mounted steam generator. Gas Pressure Regulator and Control Valve included standard.
- **Boiler Descaling Port Connection:** Inlet and Outlet descaling port connections for use with the Descaling Pump
- **Instant Steam Stand By Mode:** Holds generator at a steaming temperature. Allows unit to start steaming instantly.
- **Durable 14 Gauge, Stainless Steel Construction:** For compartment door, cavity and cabinet frame.
- **Two 60 Mechanical Timers** with ON/OFF Main Power Switch with a Heat On, Low Water Indicator Lights and High Temperature Safety Light and Shut-off (Reset Light).
- **Main Power On/Off Switch:** Controls the electric power and automatically fills the generator with water. A separate **Steam Switch** ignites the burners via a fully automatic Electronic (pilotless) Spark Ignition.
- **Exclusive Steam Cooking Distribution System:** Exclusive Brass Steam Jets produce a high velocity convection steam without fans. Coved Corner design in cooking compartment distributes heat evenly, easy to clean. Creased top & bottom enhance drainage. Cold Water Condenser for each compartment maintains a dry steam. Fully insulated cooking compartment for thermal efficiency. Removable Stainless Steel Slide Racks. Reversible Door Gasket.
- **Automatic Boiler Drain:** Contains a "Water Jet" Spray Rinse Drain Cleaning Cycle to keep drain clear.
- **Exclusive Automatic Float for Water Level Control:** Separate from the generator for easy access, contains a high velocity rinse cycle to eliminate mineral buildup.
- **Exclusive "Cool to the Touch" Two-Piece Compartment Door Design:** Free floating inner door with reversible gasket provides an air tight seal. Stainless Steel Slam/Latch Door mechanism for reliability.
- **Condensate Drip Trough:** Provided under lower compartment door to collect condensate.
- **Left Hand Door Hinging:** Compartment Doors hinged on the left, controls on the right.
- **NSF Certified 6" Stainless Steel Legs** with adjustable flanged feet for a one inch level adjustment.
- **CSD-1 Compliant**

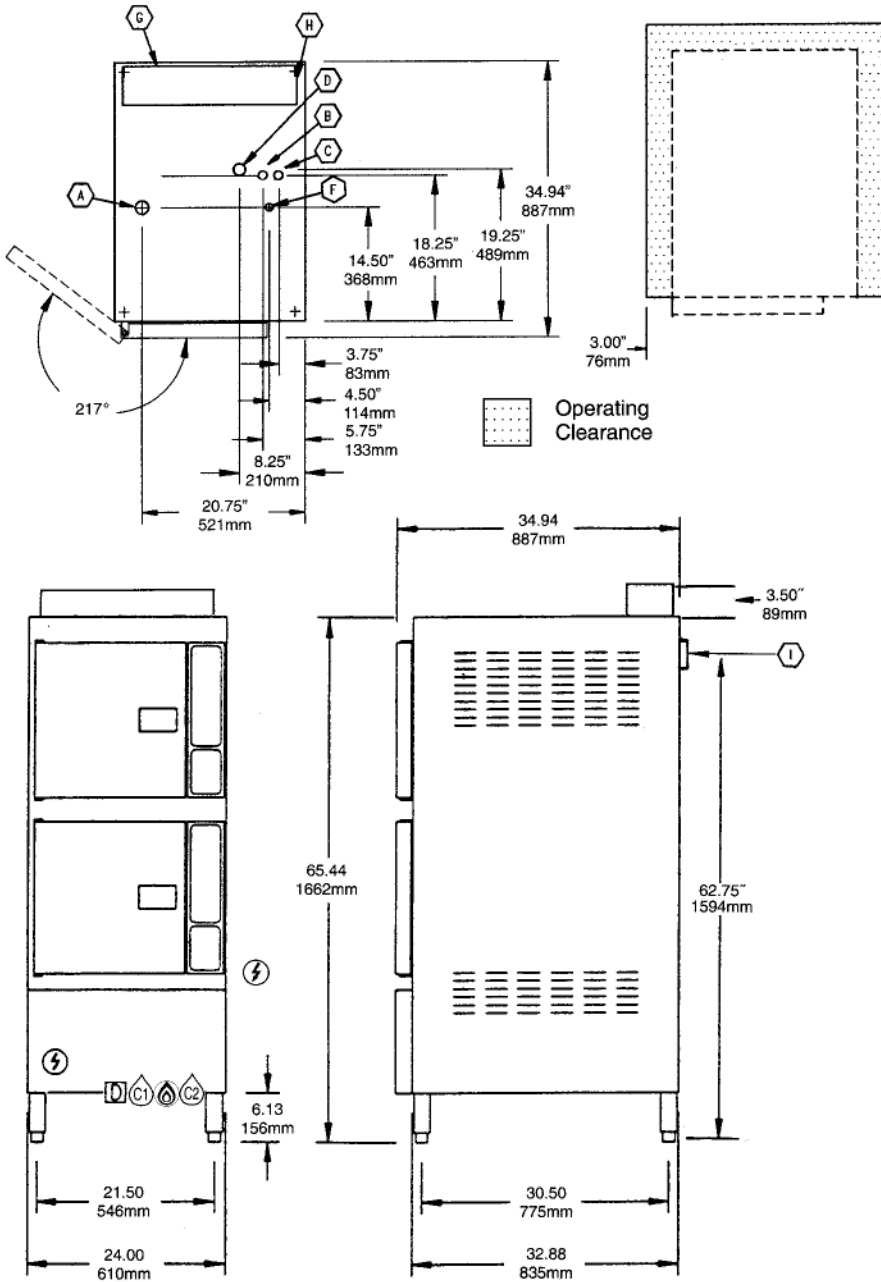


Short Form Specifications

Shall be CLEVELAND, SteamCraft® Power 10, two compartments, Floor Model Steamer, Model 24-CGP-10. Single, large capacity Gas-fired Pressure Steam Generator, 240M BTU input. Exclusive Automatic Water Level Float design. Steam Generator with Automatic Water Fill on start up, Automatic Generator Blowdown, Electronic Spark Ignition and Generator Standby for instant steam. Choice of Compartment Controls, Manual By Pass Operation Mode. Exclusive Cold Water Condenser design.

Options & Accessories

- Boiler Descaling Pump Kit (107142)
- Right hand Door Hinging, Controls on Right (DHR)
- Electronic Timer with Compensating Load Feature (ETC)
- ON/OFF Steam Switch for compartment controls (MC)
- Power Take Off Kit (GPTO-10)
- Kettle Interconnecting Kit (IMK-)
- Compartment Door Steam Shut Off Switch (SCS)
- Cafeteria Pans in depths of 1", 2½", 4" and 6"
- Type of gas other than natural
- Dissolve® Descale Solution, 6 one gallon container w/ quart markings (106174)
- Water Filters
- Correctional Packages



Each Compartment has capacity for:

- Five, 12" x 20" x 2½" deep Cafeteria Pans.

WATER QUALITY REQUIREMENTS

The quality of water varies greatly from region to region. Steam equipment generators must be drained daily and chemically descaled periodically to ensure proper operation. To minimize service problems caused by the accumulation of minerals and chemicals in water review the following quality guidelines with a local water treatment specialist. Inlet water that is beyond these specified guidelines should be treated to achieve these acceptable limits. Total Dissolved Solids less than 60 ppm, Alkalinity less than 20 ppm, Silica less than 13 ppm, pH factor greater than 7.5, Chlorine less than 30 ppm.

TOTAL CAPACITY (2 Compartments)	UTILITY CONNECTIONS		
10 — 12" x 20" x 2½" Cafeteria Pans or 20 — 12" x 20" x 1" Cafeteria Pans or 6 — 12" x 20" x 4" Cafeteria Pans	(A) Electrical Supply	(D) Drain: 1.50" Dia.	(G) Flue Gas Exhaust from Boiler
	(B) Cold Water Supply for Condenser 3/8" Dia. NPT	(F) Gas Supply .75" Dia.	(H) Flue Diverter
	(C) Cold Water Supply for Generator and Water Injection. 3/8" Dia. NPT (for water treatment conn.) Unit comes with a 50 Mesh Water Strainer (installation required)		(I) Power Take Off Connection 3/8" Dia. IPS

GAS Ⓐ	ELECTRIC ⚡	COLD WATER Ⓒ₁ Ⓒ₂	DRAINAGE D	CLEARANCE				
240,000 BTU - Piping 1½" IPS Line Size, ¾" Connection SUPPLY PRESSURE <table border="1"> <tr> <th>NATURAL</th> <th>PROPANE</th> </tr> <tr> <td>4.00" W.C. minimum 14.00" W.C. maximum</td> <td>12.00" W.C. minimum 14.00" W.C. maximum</td> </tr> </table> Manufacturer must be notified if unit will be used above 2,000 ft. altitude.	NATURAL	PROPANE	4.00" W.C. minimum 14.00" W.C. maximum	12.00" W.C. minimum 14.00" W.C. maximum	115V - 1 Phase 1 Fan & Controls - 150 Watts ** Do not connect to GFI outlet. See note below.	35 psi minimum 60 psi maximum Ⓒ₁ ¾" Dia. NPT for Generator Ⓒ₂ ¾" Dia. NPT for Condenser	1½" dia. Do not connect other units to this drain Drain must not be located beneath the steamer itself. Preferred floor drain location should be a minimum distance (from the unit) of at least 12" from the left side, 12" from the right side, 6" from the front and 6" from the rear Do not use PVC pipe	Right - 3", Left - 3", Rear - 3" (12" on control side if adjoining wall or equipment is over 30" high for service access) Contact factory for variances to clearances.
NATURAL	PROPANE							
4.00" W.C. minimum 14.00" W.C. maximum	12.00" W.C. minimum 14.00" W.C. maximum							