

## TD-321-3 Automatic Tray Dryer (Optional Component)

- Automatic conveyor tray dryer provides 99% dry trays
- Unique Air Wiper design reduces ability for bacteria to grow on wet, stacked trays
- Drier and cleaner workplace—less racking of trays for drying
- Increased productivity
- Capacity is compatible with the tray washer and based on a 15" tray
- Designed for left or right hand conveyor travel, as specified.
- Furnished only as an added component to a TRAC 321-2, TRAC 321-2 RPW or TRAC 878 traywasher



Insinger's unique Air Wiper design leaves trays 99% dry saves labor and provides a cleaner drier workplace.

### STANDARD FEATURES

- Stainless steel frame, legs and feet
- Top mounted NEMA 12 control panel
- SureFire® Start-Up & Check-Out Service

### OPTIONS

- Security package
- Tray Stacker

TD 321-3

#### AUTOQUOTES



Capacity Per Hour	Compatible with the tray washer and based on a 15" tray	
Motor Size	10 hp (blower) 1/15 hp (conveyor)	
Shipping Weight	700 lbs.	
Additional Current Draw Amps when Connected to Tray Washer	Electric Customer Fuse	
208/3/60	31.0	FRN-R-60
240/3/60	28.2	FRN-R-60
380/3/50	17.0	FRS-R-35
480/3/60	14.1	FRS-R-30

### SPECIFICATIONS

**CONSTRUCTION-** Hood and tank constructed of 16 gauge 18-8 type 304 S/S. Hood unit of all welded seamless construction. S/S frame, legs and feet.

**CONVEYOR-** One stainless steel roller conveyor chain with tray cradles, through both washer and dryer. Width between guide rails is factory adjustable from 1.5: to 3.7". Conveyor accommodates trays up to 15" high. Conveyor drive system includes direct drive gear motor with frictionless, trouble-free overload release system continuously running.

**CONTROLS-** Top-mounted control cabinet, NEMA 12 rated, housing motor controls and overload protection, transformer and contactors. All controls safe low voltage 24 VAC.

**BLOWER-** 10 hp regenerative blower with Insinger's specially designed "air wiper" mounted on either side of conveyor. "Air wipers" are mounted on a diagonal to sweep water in controlled movement preventing splashing and uneven results.

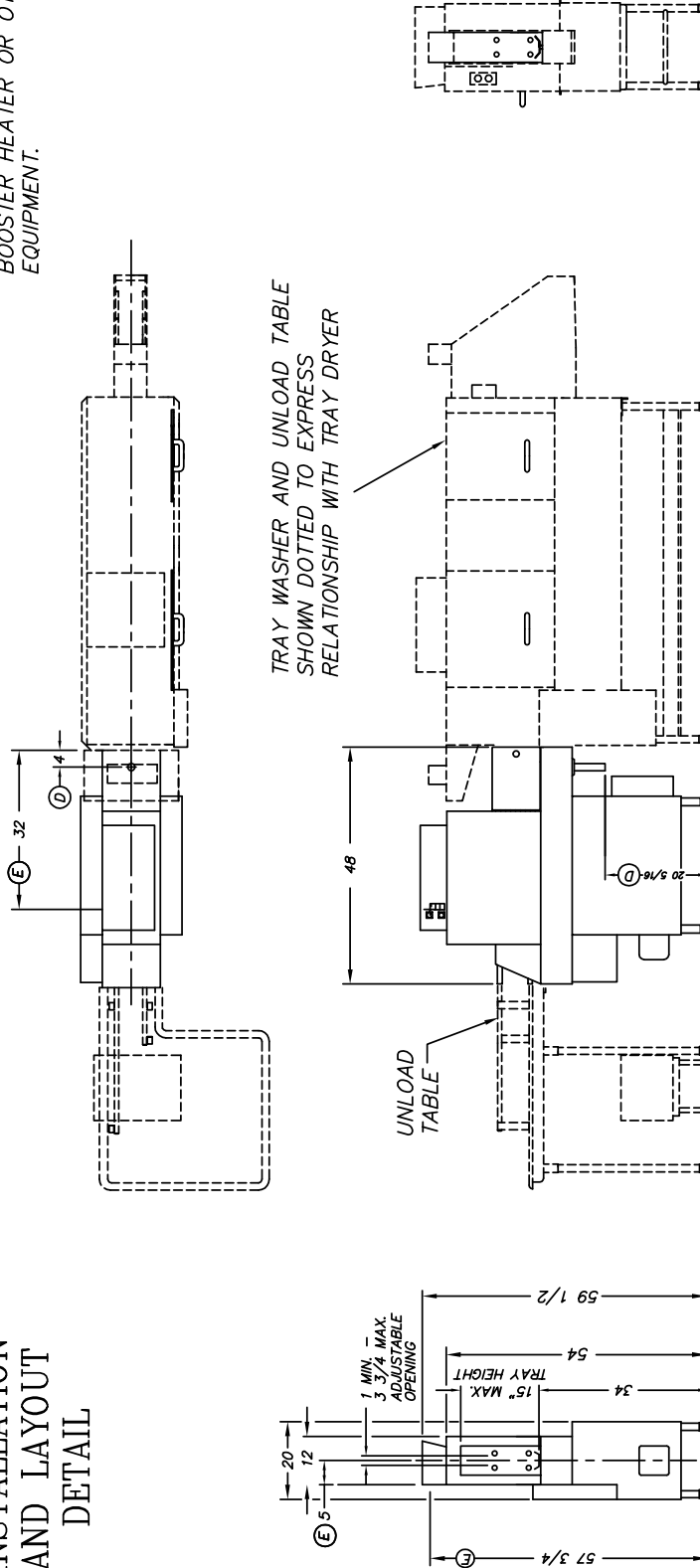
**DRAIN-** All water is drained back into TRAC 321-2, TRAC 321-2 RPW or TRAC 878 with gravity drain connection. Factory installed drain connection to tray washer provided if dryer is ordered with a TRAC 321-2, TRAC 321-2 RPW or TRAC 878.

**UNLOAD TABLE-** A stainless steel tray unload table receives clean trays. Table constructed with guide rails which ease the trays onto table.

Note: Due to product improvement we reserve the right to change information and specifications without notice.

**NOTE:**  
 INSTALLATION ON EXISTING UNITS  
 MAY REQUIRE RELOCATION OF  
 BOOSTER HEATER OR OTHER  
 EQUIPMENT.

### INSTALLATION AND LAYOUT DETAIL

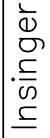


TRAY DRYER  
 UNLOAD END SHOWN

RIGHT TO LEFT FEED

**NOTE:** HOOK UP KIT FOR CONNECTION TO INSINGER  
 TRAY WASHER AVAILABLE, DWG. # 1361-105.

*Information and Specifications  
 Subject to Change Without Notice.*

THE INFORMATION ON THIS DRAWING IS THE PROPRIETARY PROPERTY OF INSINGER MACHINERY COMPANY AND THIRD PARTY MANUFACTURERS FOR ANY LIMITED TO THE COPYING OF THIS DRAWING FOR THE MANUFACTURE OF A SIMILAR OR IDENTICAL PART, COMPONENT OR EQUIPMENT. INSINGER MACHINERY COMPANY AND THIRD PARTY MANUFACTURERS SHALL BE RESPONSIBLE TO THE PARTY RESPONSIBLE FOR APPROPRIATE LEGAL ACTION.	
<b>TD 321-3 TRAY DRYER</b> SINGLE TANK CONVEYOR TYPE DISHWASHING MACHINE	
 <b>Insinger</b> Philadelphia, PA 19135 (215) 624-4800 FAX (215) 624-6966	
DRWN: EMM	SCALE
REV: KEW	1/2" = 1'
FILE: STD\TD321-3R	DWG. NO.
	TD321-3R
REV	G

ELECTRICAL CHARACTERISTICS	
VOLTAGE	CUSTOMER FUSE
208	FRN-R-60
230	FRN-R-60
460	FRS-R-30
380	FRS-R-35

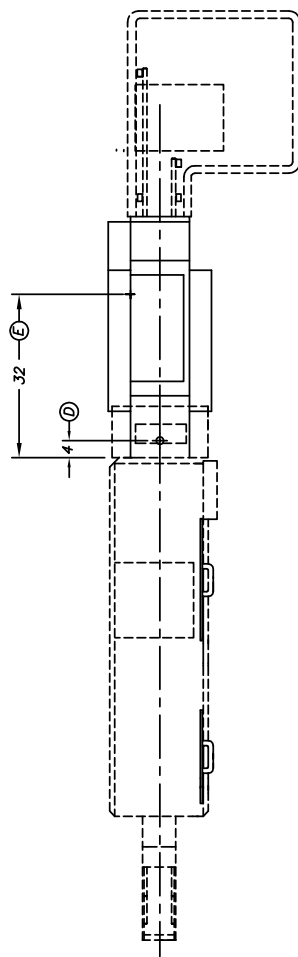
INSTALLATION CONNECTIONS	
L I R	SIZE
E	ELECT. SERVICE - BLOWER MTR.
D	DRAIN
	1 1/2 O.D. TUBE

Contact Insinger Sales at 800-344-4802 for an Installation Drawing Specific to Your Application  
 This drawing is available on the Insinger Web site at [www.insingermachine.com](http://www.insingermachine.com)

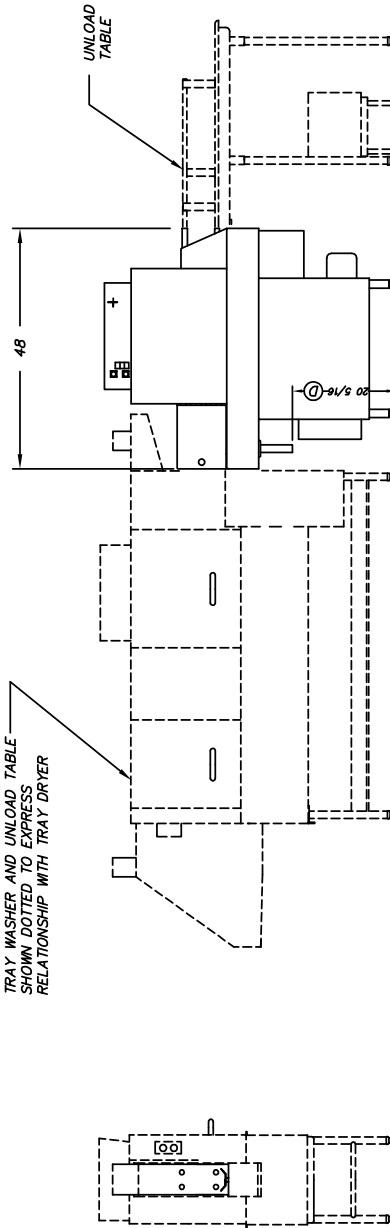
### INSTALLATION AND LAYOUT DETAIL

**NOTE:**

INSTALLATION ON EXISTING UNITS  
MAY REQUIRE RELOCATION OF  
BOOSTER HEATER OR OTHER  
EQUIPMENT.

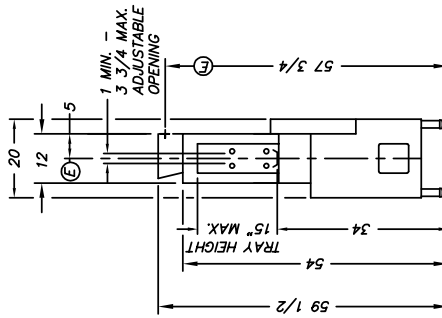


TRAY WASHER AND UNLOAD TABLE  
SHOWN DOTTED TO EXPRESS  
RELATIONSHIP WITH TRAY DRYER



← LEFT TO RIGHT FEED

TRAY DRYER  
UNLOAD END SHOWN



NOTE: HOOK UP KIT FOR CONNECTION TO INSINGER  
TRAY WASHER AVAILABLE, DWG. # 1361-105.

Information and Specifications  
Subject to Change Without Notice.

TD 321-3 TRAY DRYER SINGLE TANK CONVEYOR TYPE DISHWASHING MACHINE Philadelphia, PA 19135 (215) 624-4800 FAX (215) 624-6966		DWG. NO. TD321-3L
DRWN: EAM REV: KEM FILE: STD\TD321-3L	SCALE 1/2" = 1'	REV G

ELECTRICAL CHARACTERISTICS	
VOLTAGE	CUSTOMER FUSE
208	FRN-R-60
230	FRN-R-60
460	FRS-R-30
380	FRS-R-35

INSTALLATION CONNECTIONS	
LTR DESCRIPTION	SIZE
E ELECTRICAL CONNECTION	10 HP
D DRAIN	1 1/2 O.D. TUBE

THE INFORMATION ON THIS DRAWING IS THE PROPRIETARY PROPERTY OF INSINGER AND MAY NOT BE DISCLOSED TO ANY THIRD PARTY WHATSOEVER FOR ANY LIMITED TO THE EXTENT OF THIS MANUFACTURING OF A SIMILAR OR IDENTICAL PART OR PORTION OF ANY PROPERTY RIGHTS OF INSINGER AND THE PARTY RESPONSIBLE TO APPROPRIATE LEGAL AGENCY.

Contact Insinger Sales at 800-344-4802 for an Installation Drawing Specific to Your Application  
This drawing is available on the Insinger Web site at [www.insingermachine.com](http://www.insingermachine.com)