



ROYAL SERIES UNDERBAR ICE BINS

MODEL: _____ PROJECT: _____ ITEM #: _____ QTY: _____

PRODUCT IMAGE



STANDARD FEATURES

- **Interior**
20 gauge stainless steel. 12" or 15" deep
- **Cold Plate**
Cast aluminum post mix plate with 10 circuits. Plate is sealed into bottom. Each circuit is $\frac{5}{16}$ " OD stainless steel tubing. Two full with remainder to be half circuits. Bump and swedge fittings on ends
- **Front Apron**
20 gauge stainless steel clad over 20 gauge galvanized steel
- **Backsplash**
20 gauge stainless steel
- **Back and Bottom**
20 gauge galvanized steel
- **Legs**
1 $\frac{5}{8}$ " tubular 16 gauge stainless steel with grey plastic bullet foot
- **Tube Access (Cold Plate)**
1800 Series: $\frac{3}{4}$ " x 3 $\frac{1}{2}$ " cutout in left side of backsplash
2100 Series: $\frac{1}{2}$ " x 4.3" cutout in left side of backsplash
- **Insulation**
Foamed-in-place polyurethane
- **Plumbing**
Cold Plate: $\frac{1}{2}$ " IPS drain connection
No Cold Plate: 1" IPS drain connection
- **NOTE: Cold Plate units supplied with $\frac{1}{2}$ " x 4" male threaded PVC tailpipe**

KR18-24-10 SHOWN with OPTIONAL SPEEDRAIL

AVAILABLE IN 1800 or 2100 SERIES

OPTIONAL ACCESSORIES

- **KR-101** Condiment Tray
- **KR-103** Stainless Steel Divider
- **KR-108** Perforated Bottom
- **KR-310** Right End Splash
- **KR-311** Left End Splash
- **KR-320** Partial Sliding Cover (Using Bottle Wells)
- **KR-321** Full Sliding Cover (No Bottle Wells)
- **KR-401** Cap Catcher and Opener
- **KR-406** Faucet installed over Ice Bin for Meltdown
- **KR-501** Towel Ring



APPROVED BY:

CERTIFICATIONS:

Due to our commitment to continued product improvement, specifications are subject to change without notice.

Printed in the USA

Krowne Metal Corporation

100 Haul Rd. Wayne, NJ 07470 • Toll Free: (800) 631-0442 • Fax: (973) 872-1129
sales@krowne.com • www.krowne.com • www.facebook.com/KrowneMetal • www.twitter.com/KrowneMetal

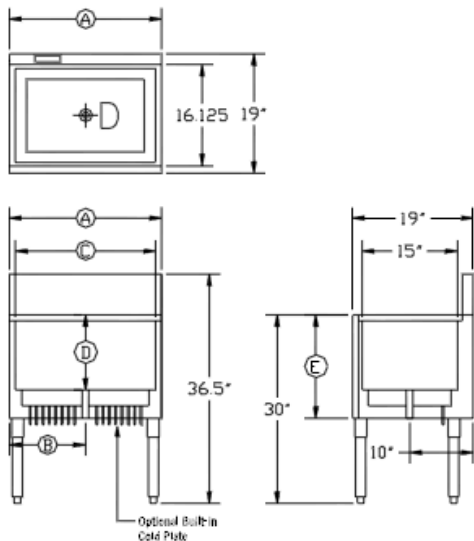
Rev. 03/2012
No. 5.6



ROYAL SERIES UNDERBAR ICE BINS

MODEL: _____ PROJECT: _____ ITEM #: _____ QTY: _____

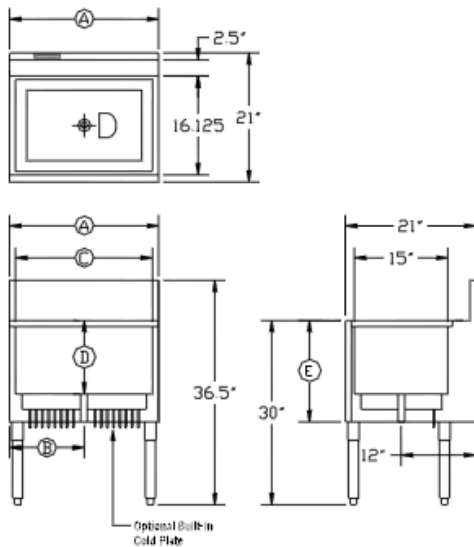
1800 SERIES



Model Numbers	Overall Length Ⓐ	Left Side to Drain Ⓑ	Interior Dimensions Ⓒ	Inside Depth Ⓓ	Outside Depth Ⓔ	Ice Capacity (lbs.)	Cold Plate Circuits	Weight (lbs.)
KR18-24	2'-0"	12"	15" x 22"	12"	13 1/2"	80	N/A	60
KR18-30	2'-6"	15"	15" x 28"	12"	13 1/2"	97	N/A	80
KR18-36	3'-0"	18"	15" x 34"	12"	13 1/2"	115	N/A	95
KR18-42	3'-6"	21"	15" x 40"	12"	13 1/2"	135	N/A	115
KR18-48	4'-0"	24"	15" x 46"	12"	13 1/2"	160	N/A	130
KR18-24-10	2'-0"	12"	15" x 22"	12"	16 1/2"	80	10	166
KR18-30-10	2'-6"	15"	15" x 28"	12"	16 1/2"	97	10	185
KR18-36-10	3'-0"	18"	15" x 34"	12"	16 1/2"	115	10	199
KR18-42-10	3'-6"	21"	15" x 40"	12"	16 1/2"	135	10	235
KR18-48-10	4'-0"	24"	15" x 46"	12"	16 1/2"	160	10	249
KR18-24DP	2'-0"	12"	15" x 22"	15"	16 1/2"	100	N/A	75
KR18-30DP	2'-6"	15"	15" x 28"	15"	16 1/2"	120	N/A	100
KR18-36DP	3'-0"	18"	15" x 34"	15"	16 1/2"	138	N/A	125
KR18-48DP	4'-0"	24"	15" x 46"	15"	16 1/2"	178	N/A	216
KR18-24DP-10	2'-0"	12"	15" x 22"	15"	19 1/2"	100	10	188
KR18-30DP-10	2'-6"	15"	15" x 28"	15"	19 1/2"	120	10	225
KR18-36DP-10	3'-0"	18"	15" x 34"	15"	19 1/2"	138	10	270
KR18-48DP-10	4'-0"	24"	15" x 46"	15"	19 1/2"	178	10	296

MECHANICAL REQUIREMENTS: 1" IPS drain connection without Cold Plate. 1/2" IPS drain connection with Cold Plate.

2100 SERIES



Model Numbers	Overall Length Ⓐ	Left Side to Drain Ⓑ	Interior Dimensions Ⓒ	Inside Depth Ⓓ	Outside Depth Ⓔ	Ice Capacity (lbs.)	Cold Plate Circuits	Weight (lbs.)
KR21-24	2'-0"	12"	15" x 22"	12"	13 1/2"	80	N/A	60
KR21-30	2'-6"	15"	15" x 28"	12"	13 1/2"	97	N/A	80
KR21-36	3'-0"	18"	15" x 34"	12"	13 1/2"	115	N/A	95
KR21-42	3'-6"	21"	15" x 40"	12"	13 1/2"	135	N/A	115
KR21-48	4'-0"	24"	15" x 46"	12"	13 1/2"	160	N/A	130
KR21-24-10	2'-0"	12"	15" x 22"	12"	16 1/2"	80	10	166
KR21-30-10	2'-6"	15"	15" x 28"	12"	16 1/2"	97	10	185
KR21-36-10	3'-0"	18"	15" x 34"	12"	16 1/2"	115	10	199
KR21-42-10	3'-6"	21"	15" x 40"	12"	16 1/2"	135	10	235
KR21-48-10	4'-0"	24"	15" x 46"	12"	16 1/2"	160	10	249
KR21-24DP	2'-0"	12"	15" x 22"	15"	16 1/2"	100	N/A	75
KR21-30DP	2'-6"	15"	15" x 28"	15"	16 1/2"	120	N/A	100
KR21-36DP	3'-0"	18"	15" x 34"	15"	16 1/2"	138	N/A	125
KR21-48DP	4'-0"	24"	15" x 46"	15"	16 1/2"	178	N/A	216
KR21-24DP-10	2'-0"	12"	15" x 22"	15"	19 1/2"	100	10	188
KR21-30DP-10	2'-6"	15"	15" x 28"	15"	19 1/2"	120	10	225
KR21-36DP-10	3'-0"	18"	15" x 34"	15"	19 1/2"	138	10	270
KR21-48DP-10	4'-0"	24"	15" x 46"	15"	19 1/2"	178	10	296

MECHANICAL REQUIREMENTS: 1" IPS drain connection without Cold Plate. 1/2" IPS drain connection with Cold Plate.



APPROVED BY:

CERTIFICATIONS:

Due to our commitment to continued product improvement, specifications are subject to change without notice.