



ROYAL SERIES UNDERBAR FOUR COMPARTMENT BAR SINKS

MODEL: _____ PROJECT: _____ ITEM #: _____ QTY: _____

PRODUCT IMAGE



KR18-64C SHOWN

AVAILABLE IN 1800 or 2100 SERIES

OPTIONAL ACCESSORIES

- KR-402 Faucet Install Kit
- KR-301 Right End Return (Corner)
- KR-302 Left End Return (Corner)
- KR-310 Right End Splash
- KR-311 Left End Splash
- KR-401 Cap Catcher and Opener
- KR-501 Towel Ring
- KR-701 Perforated Dump Basket
- KR-806 Upgrade: 6" Longer Stainless Steel Legs
- RS-"XX" Sound Deadened Single Speedrail ("XX" indicates size)
- RD-"XX" Sound Deadened Double Speedrail ("XX" indicates size)

STANDARD FEATURES

- **Sink Bowl**
20 gauge stainless steel. 10" x 14" x 10" deep sink bowl.
Furnished with 1" IPS rear corner drain and 7 1/2" overflow pipe
- **Drainboard**
20 gauge stainless steel reinforced with welded braces every 6"
- **Front Apron**
20 gauge stainless steel clad over 20 gauge galvanized steel
- **Sides**
20 gauge stainless steel
- **Backsplash**
20 gauge stainless steel
- **Back and Bottom**
20 gauge galvanized steel
- **Legs**
1 5/8" tubular 16 gauge stainless steel with grey plastic bullet foot
- **Plumbing**
Hot/Cold Water: 1/2" IPS
Drain: 1" IPS
- **Faucet**
2 4" OC wall or deck mount faucet with ceramic cartridge valves
- **Low Lead Compliance**
Low Lead Compliant faucets meet
California AB-1953 and Vermont S152 standards



CERTIFICATIONS:

APPROVED BY:

Due to our commitment to continued product improvement, specifications are subject to change without notice.

Printed in the USA

Krowne Metal Corporation

100 Haul Rd. Wayne, NJ 07470 • Toll Free: (800) 631-0442 • Fax: (973) 872-1129
sales@krowne.com • www.krowne.com • www.facebook.com/KrowneMetal • www.twitter.com/KrowneMetal

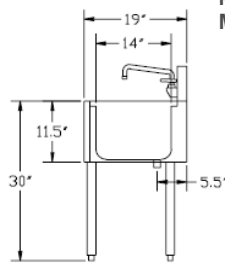
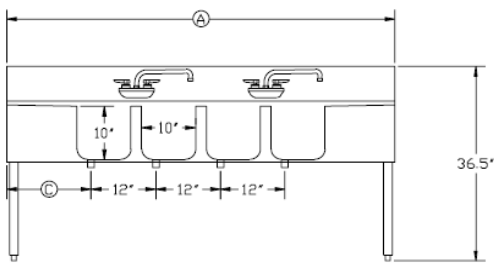
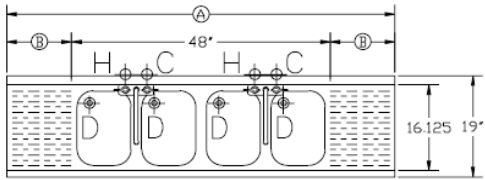
Rev. 03/2012
No. 5.13



ROYAL SERIES UNDERBAR FOUR COMPARTMENT BAR SINKS

MODEL: _____ PROJECT: _____ ITEM #: _____ QTY: _____

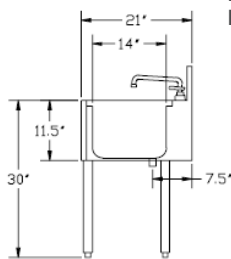
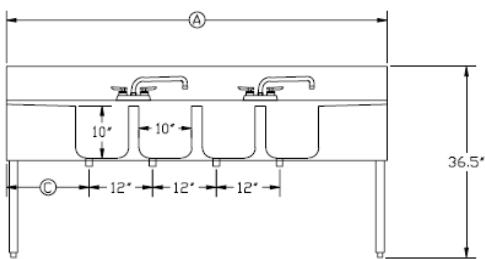
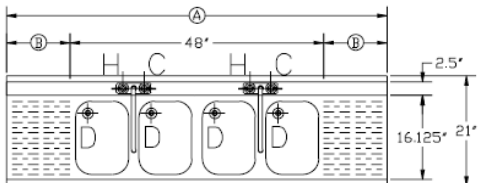
1800 SERIES



Model Numbers	Overall Length (A)	Drainboard (B)	Left Side to Drain (C)	Bowl Location	Weight (lbs.)
KR18-44C	4'-0"	N/A	4"	Center	115
KR18-64C	6'-0"	12" Each	15"	Center	140
KR18-74C	7'-0"	18" Each	21"	Center	155
KR18-84C	8'-0"	24" Each	27"	Center	190

NOTE: Letter at end of Model Number represents Bowl Location
MECHANICAL REQUIREMENTS: 1/2" IPS Hot and Cold water. 1" IPS drain connection.

2100 SERIES



Model Numbers	Overall Length (A)	Drainboard (B)	Left Side to Drain (C)	Bowl Location	Weight (lbs.)
KR21-44C	4'-0"	N/A	4"	Center	115
KR21-64C	6'-0"	12" Each	15"	Center	140
KR21-74C	7'-0"	18" Each	21"	Center	155
KR21-84C	8'-0"	24" Each	27"	Center	190

NOTE: Letter at end of Model Number represents Bowl Location
MECHANICAL REQUIREMENTS: 1/2" IPS Hot and Cold water. 1" IPS drain connection.



APPROVED BY:

Due to our commitment to continued product improvement, specifications are subject to change without notice.

CERTIFICATIONS:

Printed in the USA

Krowne Metal Corporation

100 Haul Rd. Wayne, NJ 07470 • Toll Free: (800) 631-0442 • Fax: (973) 872-1129

sales@krowne.com • www.krowne.com • www.facebook.com/KrowneMetal • www.twitter.com/KrowneMetal

Rev. 03/2012
No. 5.13