



MBGR26H



MBGR70H



MBGR SERIES

Bottom Mounted Swinging Glass Door Reach-In Refrigerators

- MODELS**
- MBGR26H
 - MBGR70H

C-UL listing applies to MBGR26H only. This equipment is intended for storage and display of non-potentially hazardous bottled or canned products only.

FEATURES

CONSTRUCTION

- Black painted steel exterior
- White painted steel interior
- Foamed-in-place with low ODP polyurethane insulation
- Top graphic panel backlit by fluorescent lights (graphics not supplied)
- Interior vertical fluorescent lighting
- Wall thickness:
 - MBGR26H 1.6"
 - MBGR70H 2"
- Adjustable legs for leveling
- Four adjustable heavy-duty vinyl-coated shelves per door

DOORS

- Self-closing
- Hold open feature
- Double pane glass with layer of patented transparent thermal insulation film between glass panes provides superior insulation without the weight of triple pane glass
- Standard door swing configuration:
 - MBGR26H hinged right
 - MBGR70H left door hinged left, middle door hinged right, right door hinged right
- Door width:
 - MBGR26H 28"
 - MBGR70H 25½"

REFRIGERATION

- Self-contained bottom mount refrigeration system
- Capillary tube to control refrigerant flow
- Fabric condensation kit uses wicks to draw condensate from the drain pan for faster removal
- Refrigerant: R-134a
- Temperature range: 32° to 40°F (0° to 4° C)

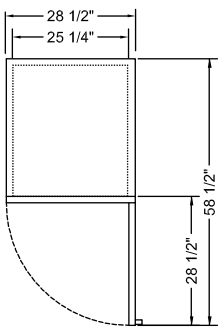
WARRANTY

- **Standard limited three year parts and labor**
- **Additional two year coverage on compressor part**

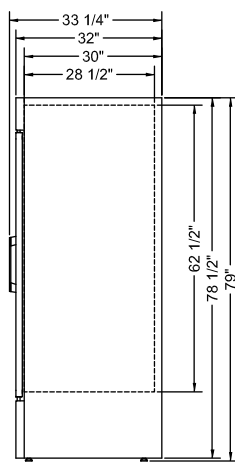
TECHNICAL SPECIFICATIONS

| MODEL | DIMENSIONS (in.) | | | DIMENSIONS (mm) | | | VOLTS | AMPS | UNIT H.P. | NO. OF DOORS | NO. OF SHELVES | STANDARD SHELF SIZE (in inches) | CAP. CU. FT. | SHIP CU. FT. | SHIP WT. (LB/KG) |
|---------|---------------------|--------|--------|--------------------|-----|------|-------|------|--------------|-----------------|-------------------|--|--------------------|--------------------|------------------------|
| | L | D* | H | L | D* | H | | | | | | | | | |
| MBGR26H | 28 1/2 | 33 1/4 | 79 | 724 | 845 | 2007 | 115 | 3.9 | 1/3 | 1 | 4 | 24.2 x 23.1 | 24.0 | 45.8 | 353/160 |
| MBGR70H | 78 | 33 | 79 1/2 | 1981 | 838 | 2019 | 115 | 11.9 | 3/5 | 3 | 12 | 25.2 x 22 (center), 22 x 22.1 (left, right) | 72.0 | 130.9 | 696/316 |

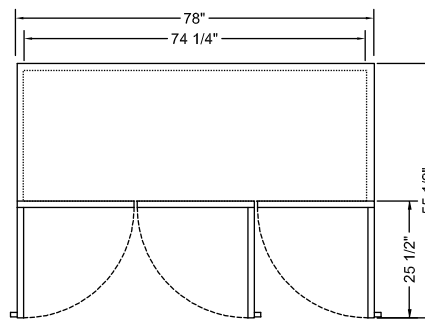
*Depth includes door handle.



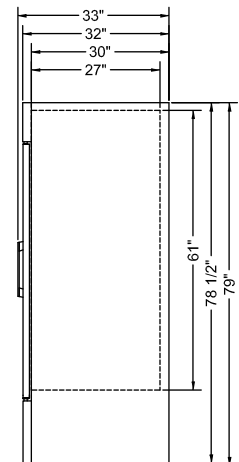
MBGR26H
PLAN VIEW



MBGR26H
SIDE VIEW



MBGR70H
PLAN VIEW



MBGR70H
SIDE VIEW

LISTINGS

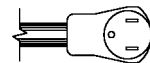


C-UL listing applies to MBGR26H model only.

This equipment is intended for storage and display of non-potentially hazardous bottled or canned products only.

HOOKUP

All models via plug in, 9.8 foot long flexible three wire 14/3 cord with molded plug.



NEMA 5-15P

BID SPECIFICATIONS

Item no. MBGR_____. Provide _____ Bottom Mounted Glass Door Reach-in(s), Master-Bilt model no. MBGR_____.

Reach-in will be constructed of black painted steel exterior and white painted steel interior. Standard features will include vinyl-

coated welded wire shelves and doors with double pane glass.

The refrigeration system will be bottom mounted and self-contained. Refrigerant will be R-134A. The temperature range will be 32° to 40°F (0° to 4° C).

Reach-in to have standard limited three year parts and labor with additional two year coverage on compressor part.

Reach-in to be UL and ETL Sanitation listed. MBGR26H will also be C-UL listed.

NOTE: Cabinet designed for optimum performance in air-conditioned area at 75°F ambient and 55% relative humidity. All specifications subject to change without notice.