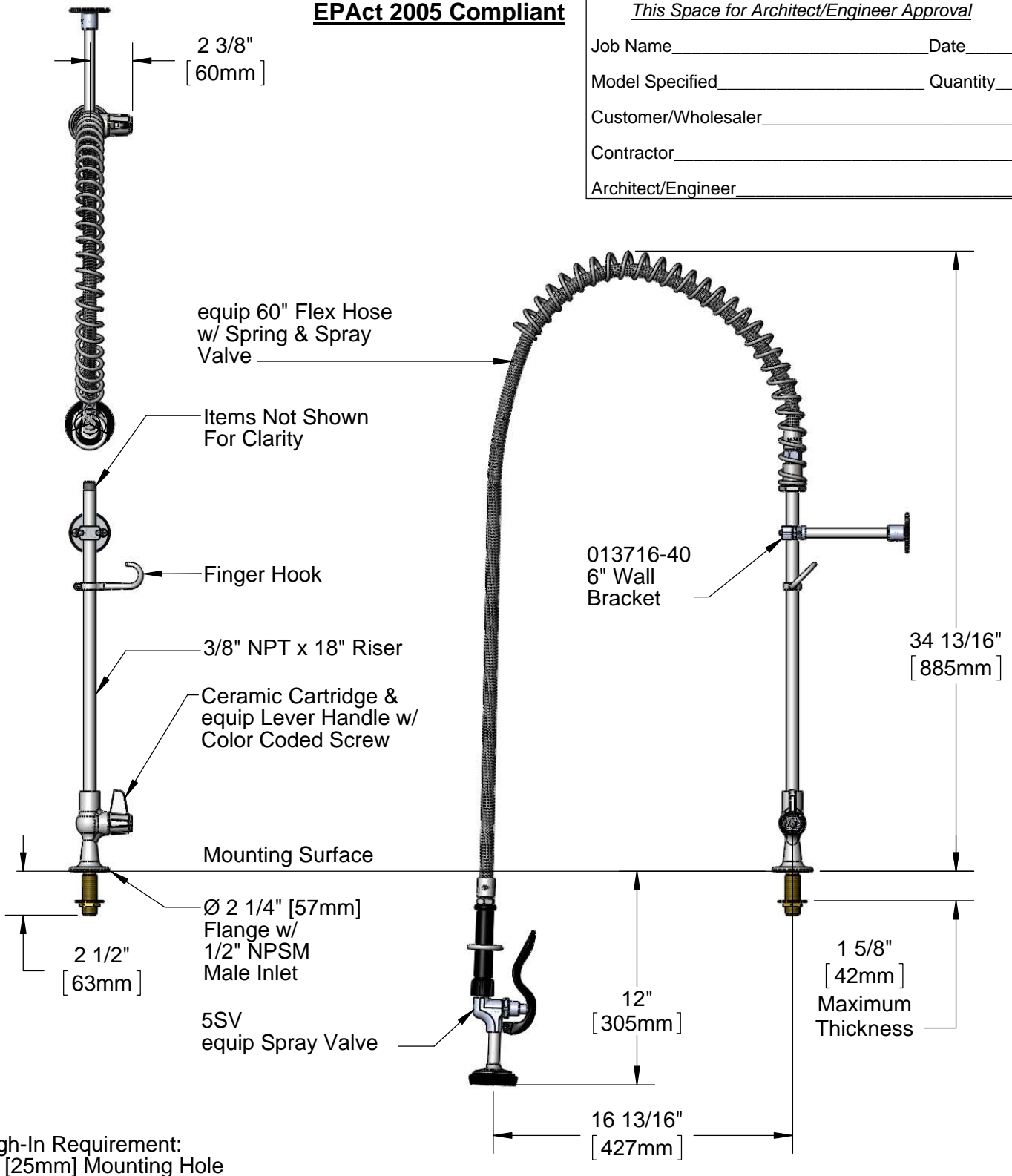


EPAct 2005 Compliant

This Space for Architect/Engineer Approval

Job Name _____ Date _____
 Model Specified _____ Quantity _____
 Customer/Wholesaler _____
 Contractor _____
 Architect/Engineer _____



Rough-In Requirement:
 Ø 1" [25mm] Mounting Hole

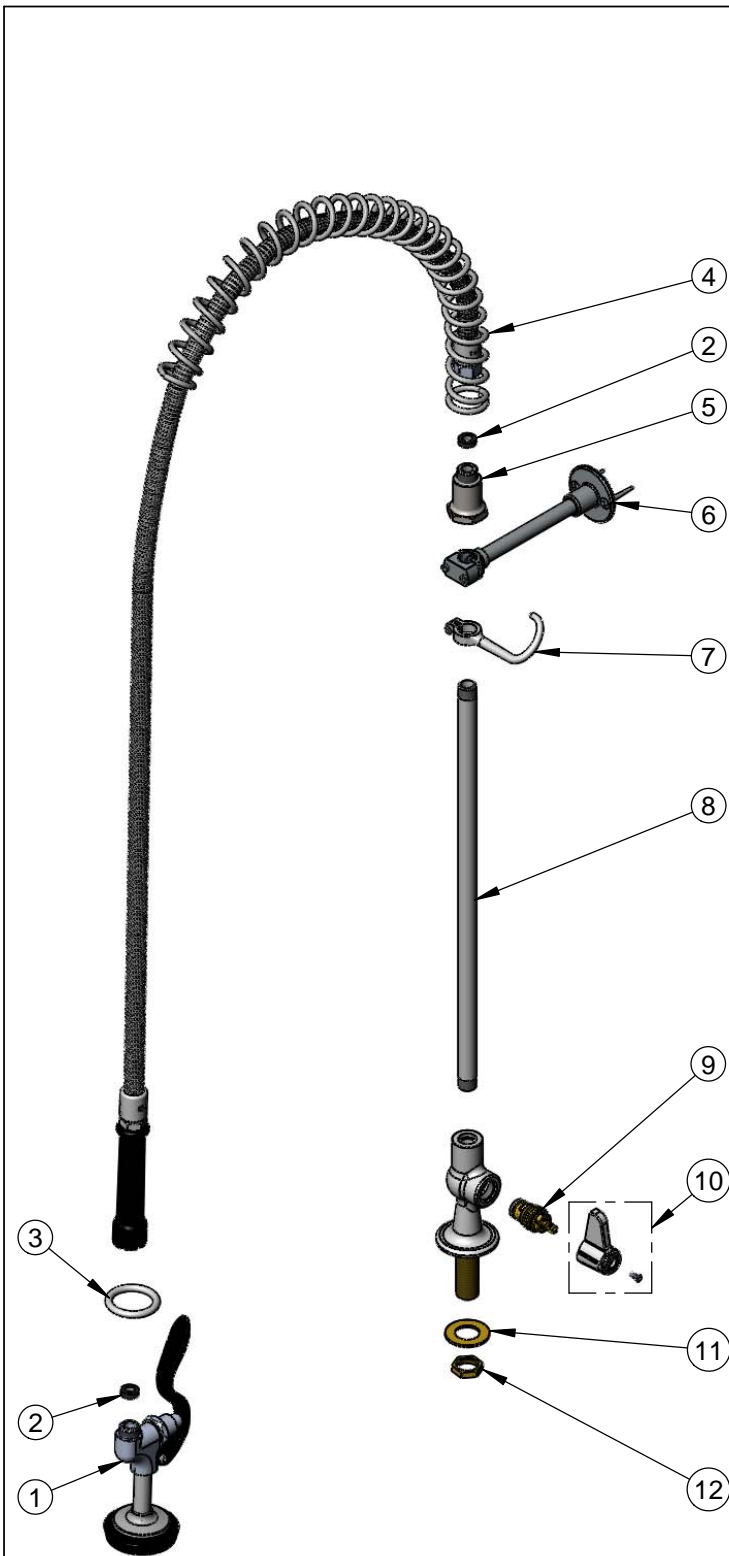
Model Number 5PR-1S00-60	Date 08/08/12	Scale 1:8	Drawn DHL	Checked DMH	Approved JHB
-----------------------------	------------------	--------------	--------------	----------------	-----------------

Product Specifications:

Pre-Rinse Unit: Single Hole Deck Mount Faucet, Ceramic Cartridge, equip 60" Flex Hose, 5SV equip Spray Valve, 6" Wall Bracket, & 1/2" NPSM Male Inlet

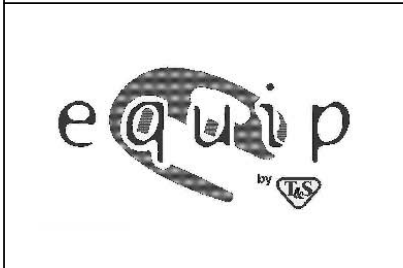


equip Foodservice Accessories
 2 Saddleback Cove, P.O. Box 1088
 Travelers Rest, South Carolina 29690
 Phone: 800.891.4808 Fax: 800.868.0084



ITEM NO.	SALES NO.	DESCRIPTION
1	5SV	equip Spray Valve
2	010476-45	#27 Washer
3	000907-45	Spray Valve Hold Down Ring
4	014068-45	Overhead Spring
5	000821-40	Spring Body
6	013716-40	6" Wall Bracket
7	004R	Finger Hook
8	000369-40	3/8" NPT x 18" Long Riser
9	013787-45	equip Ceramic Cartridge, RTC
10	5-HDL-L	equip Lever Handle w/ Color Coded Screws
11	000999-45	Brass Lock Washer
12	002954-45	Shank Lock Nut

Model Number 5PR-1S00-60	Date 08/08/12	Scale NTS	Drawn DHL	Checked DMH	Approved JHB
-----------------------------	------------------	--------------	--------------	----------------	-----------------



Product Specifications:
Pre-Rinse Unit: Single Hole Deck Mount Faucet, Ceramic Cartridge, equip 60" Flex Hose, 5SV equip Spray Valve, 6" Wall Bracket, & 1/2" NPSM Male Inlet

equip Foodservice Accessories
 2 Saddleback Cove, P.O. Box 1088
 Travelers Rest, South Carolina 29690
 Phone: 800.891.4808 Fax: 800.868.0084