

Project: _____ Location: _____ Item #: _____ Quantity: _____

Standard Features

- Natural Gas or Propane
- Double wall kettle interior.
- Bottom kettle is hemispherical designed for superior heat circulation.
- Adjustable four hole feet for securing to the floor.
- Ability to manual tilt a full 90° for complete emptying.
- Power Switch, thermostat, pilot switch, low water light, vacuum/pressure gauge, safety relief valve and low water shut off.
- Fully Insulated
- "Clean Lock" to hold kettle in cooking position or 105° for ease of cleaning.

Optional Features

- Etched gallon markings (ACGM-)
- Etched litre markings (ACLM-).
- Correctional package.
- Lift off Cover (ACC-12G).

Electrical Options

- 115 VAC, 1 Phase, 50/60 Hz.
- 208-240 VAC, 1 Phase, 50/60 Hz.

Short Spec

Kettle shall be AccuTemp's Model ACGC-12, gas fired, self-contained steam jacketed kettle. A double wall kettle interior shall form a steam jacket around the lower 2/3 of the kettle. The jacket enclosure shall contain factory sealed distilled water. Kettle exterior is fully insulated. The bottom of the kettle shall be of hemispherical design for superior heat circulation. The mounting base shall include four stainless steel tubular legs fitted with a four hole adjustable foot for securing the unit to the floor and a stainless steel mechanism housing. A removable operating handle with high heat proof knob shall be mounted on the right. Construction shall be stainless steel type 304 with #4 satin exterior finish. The interior kettle liner shall be a one piece welded construction made with type 316 stainless steel for added resistance to corrosion.

The controls shall be integrally mounted to the kettle and shall include solid state thermostat, power switch temperature light, ignition light, low water indicator light, water sight glass, pressure gauge and electronic ignition. Safety features, low water shut off, burners turn off automatically when kettle is tilted, pressure switch and pressure relief valve. The kettle shall operate in a temperature range of 150 degrees Fahrenheit (66 degrees Celsius) to 285 degrees Fahrenheit (140 degrees Celsius) at a maximum pressure of 50 PSI (345 kPa).

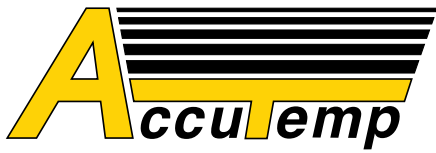
Other Approvals



ACGC-12 Model

Accessories

- Single pantry faucet with swing spout (ACSF-18).
- Double pantry faucet with swing spout (ACDF-18).
- Pour lip strainer (ACTKS-).
- Optional floor stand Factory Installed (AC7700-1).
- Stainless Steel Baskets (ACSSB-12).



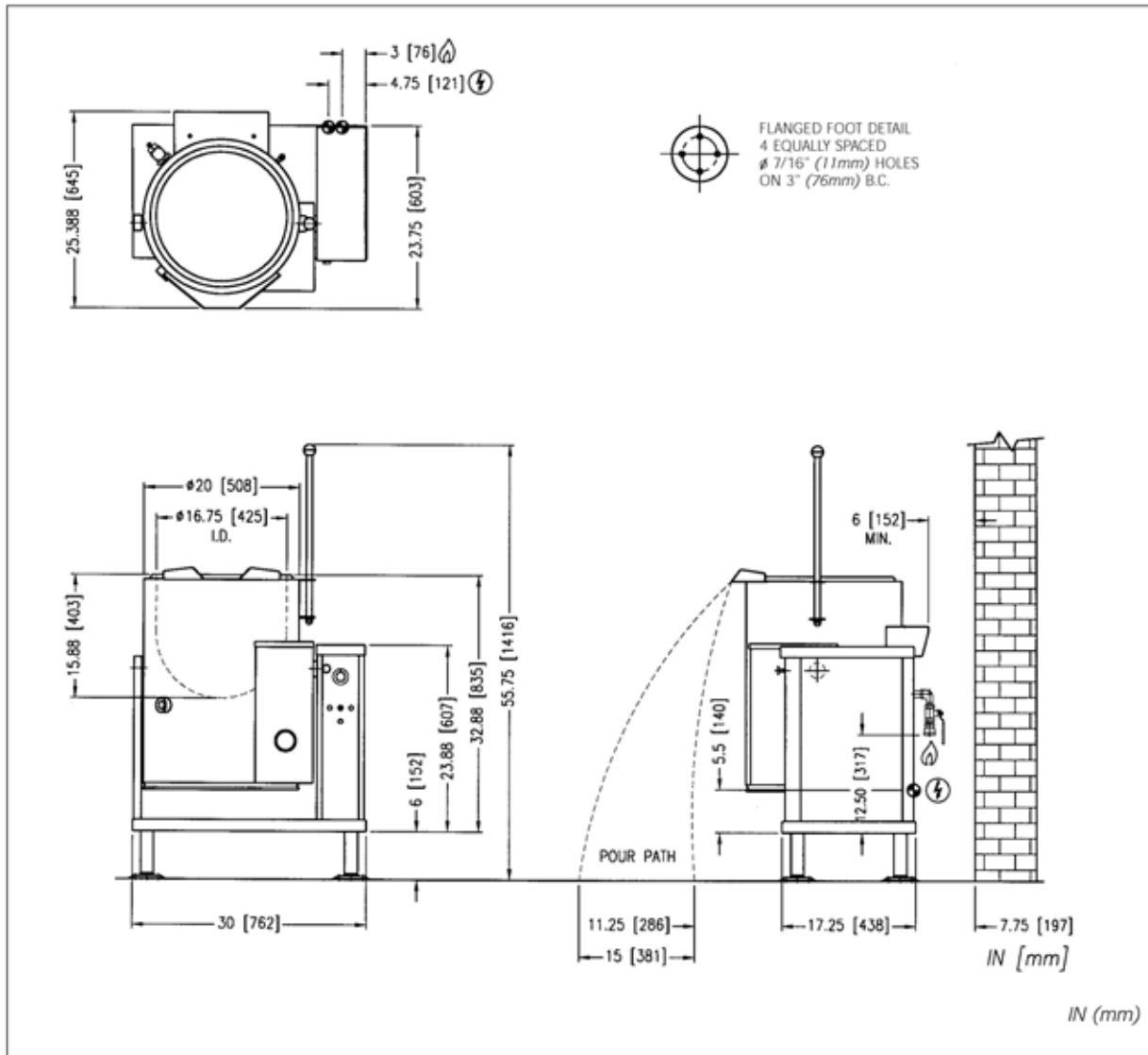
GAS STEAM JACKETED KETTLE TILTING

12 GALLON CAPACITY—GAS FIRED,
MANUAL TILT, ELECTRONIC IGNITION

Gas Kettle Model "ACGC-12" Specifications						
GAS SUPPLY						
Model #	SHIPPING WEIGHT	BTU/HR.	KW/HR	SUPPLY PIPE PRESSURE (W.C.)		MIN CLEARANCE*
ACGC-12	345 lbs [157 kgs]	43,000	12.6	Natural 6"-14" (152-356mm)	Propane 11"-14" (279-356mm)	SIDES 3 [76]

Notes:

1. Supply gas through 3/4" pipe. A gas shut-off valve must be installed in supply piping convenient and adjacent to appliance.
2. Unless otherwise specified, Field Wire Electrical Connection to be 120V, 60Hz single phase with grounding wire. Unit supplied with 6' cord and 3-prong plug. Max AMPS: 2.0
3. Hot and Cold Water: 3/8" OD tubing to faucet (OPTIONAL).



MM6228-1105

AccuTemp Products, Inc.

8415 North Clinton Park • Fort Wayne, IN 46825 • 800-210-5907 • 260-493-0415 • Fax 260-493-0318 • accutemp.net