



TRACTION HOG

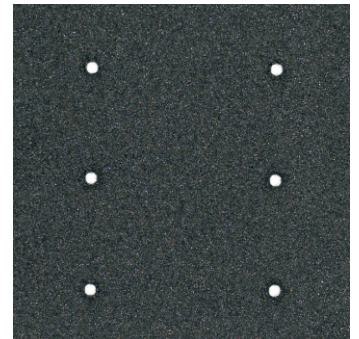
slip resistant

FEATURES AND BENEFITS

- Slip resistant silicon carbide coating for maximum performance - Coefficient of Friction .78
- Certified Slip-Resistant by the National Floor Safety Institute.
- Anti-Static.
- Low profile border design allows carts to cross easily.
- Unique disk pattern on back of mat keeps mat in place.
- Constructed of 100% Grease-proof Nitrile rubber which is also heat resistant.
- Green friendly, has 15-20% recycled content.
- Available in drainable and non-drainable versions in 3' x 5' and 3' x 10' sizes. Also available in a non-drainable 3' x 20'.
- Applications include: cooking areas, dishwashing areas, wet and slippery manufacturing areas, walk-in coolers and freezers.



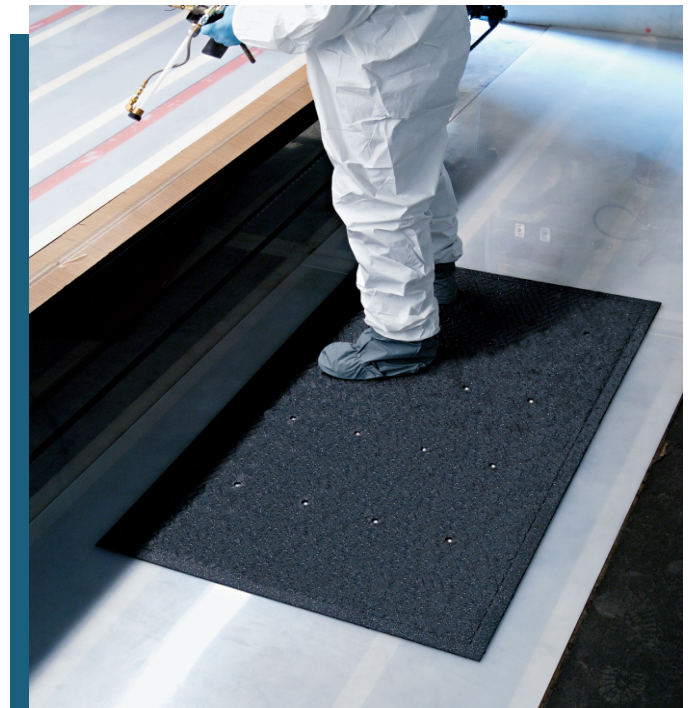
TRACTION HOG



TRACTION HOG DRAINABLE



TRACTION HOG



TRACTION HOG DRAINABLE



TRACTION HOG

TRACTION HOG

Product No. 418

SIZE	Size Approx. in.	QUANTITY/PRICE			Shipping Wt. (lbs.)
		1 - 6	7 - 30	31+	
3 x 5	35" x 59"				22
3 x 10	35" x 118"				44
3 x 20	35" x 237"				88

TRACTION HOG - Drainable

Product No. 419

SIZE	Size Approx. in.	QUANTITY/PRICE			Shipping Wt. (lbs.)
		1 - 6	7 - 30	31+	
3 x 5	35" x 59"				22
3 x 10	35" x 118"				44

