

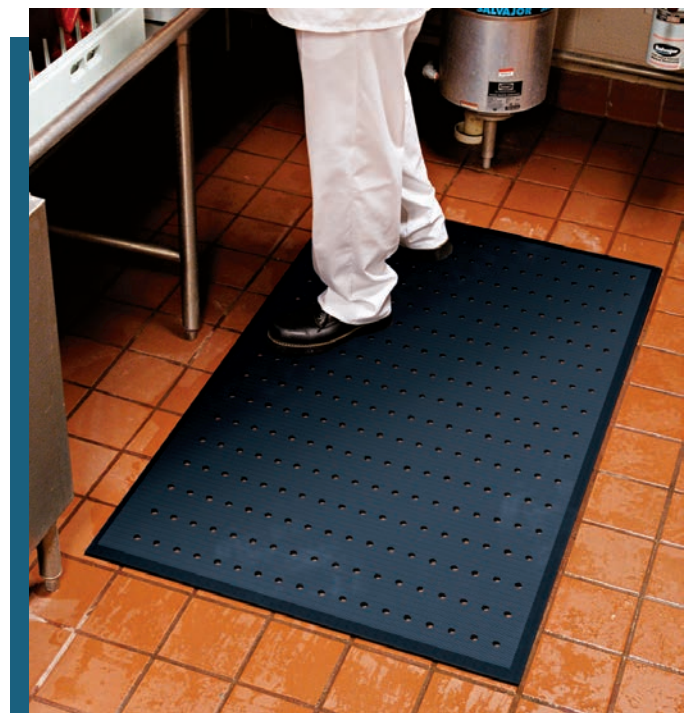
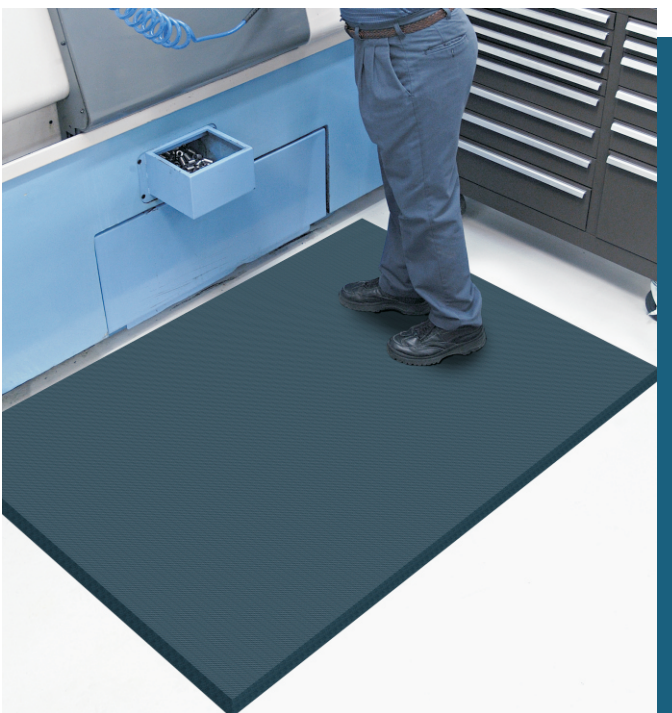
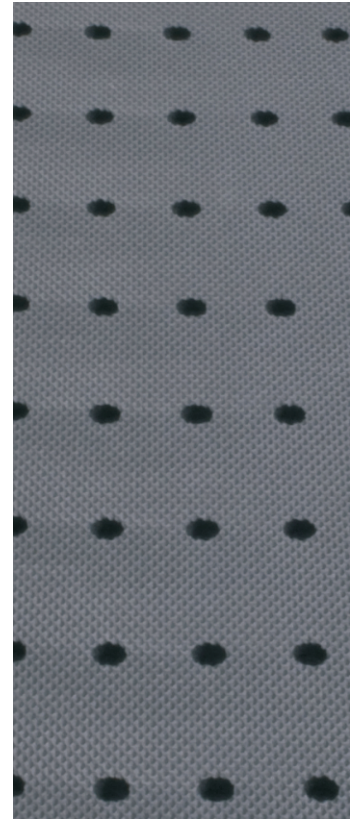


COMPLETE COMFORT

indoor/outdoor

FEATURES AND BENEFITS

- Ergonomically superior anti-fatigue mat.
- 100% closed-cell Nitrile Rubber construction.
- Anti-microbial treated, slip resistant surface is grease, oil and chemical resistant.
- Perfect for wet or dry areas.
- Textured surface for superior slip and skid resistance.
- Beveled edges for easier floor to mat transition.
- Light weight and easy to clean.
- Static Coefficient of Friction - Dry is 0.88, Wet is 0.79
- Available in 7 standard sizes or 3' and 4' widths up to 75' in length.
- Color: Black





COMPLETE COMFORT

www.andersenco.com

COMPLETE COMFORT 5/8"

Product No. 494

SIZE		QUANTITY/PRICE			Shipping Wt. (lbs.)
		1 - 6	7 - 30	31+	
2' x 3'	24" x 36"				5
3' x 4'	36" x 48"				10
3' x 5'	36" x 60"				12.5
3' x 10'	36" x 120"				25
4' x 6'	48" x 72"				20
4' x 8'	48" x 96"				26.75

SPECIAL SIZES: May be ordered in lengths up to 75'. Special size mats are available in whole foot increments only.

SPECIAL SIZES – Prices are per Linear Foot (\$).

3' WIDTHS	
4' WIDTHS	

