

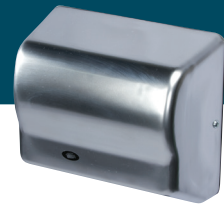
GLOBAL® GX HAND DRYER SERIES SPECIFICATION



White ABS



Steel White Epoxy



Steel Satin Chrome

VANDAL RESISTANT • 2-YEAR WARRANTY

THE **GLOBAL**® SERIES PROVIDES A QUIET AND COMPACT DESIGN TO FIT ANY BUDGET.

Heavy-Duty, One-Piece Cover Options:

- Flame-retardant white ABS
- Steel with white epoxy finish (M)
- Steel with satin chrome finish (C)

Vandal Resistant: Tamper-resistant screws secure cover to base. Air intake vents are shielded for additional safety.

Motor: Permanently lubricated, maintenance-free, brushless induction motor with automatic resetting thermal protector. 1/12 HP, 3100 RPM.

Automatic Sensor: Energy-efficient, microprocessor-controlled sensor turns dryer on when hands are under the outlet for up to 60 seconds. Standby power is only one watt. Features RoHS compliant lead-free design.

Heating Element: Constructed of NiChrome resistance wire with thermal protector. Heating element operates in the black range for maximum life.

2-year Limited Warranty: Includes same-day factory repair or part replacement. See owner's manual for details.

GLOBAL SPECIFICATIONS

Dry Time	40 Seconds
Air Flow	120 CFM (Cubic Feet per Min.)
Air Velocity	4,000 LFM (Liner Feet per Min.)
Air Temperature	120° F at 72° F room temperature
Sound Level	63 dB (Quietest in its class)
Dimensions Surface	10-1/8" W x 9-3/8" H x 5-5/8" D

GLOBAL MODEL REFERENCE CHART

White ABS	GX1	GX3
Steel White Epoxy	GX1-M	GX3-M
Steel Satin Chrome	GX1-C	GX3-C
	110-120 V 50/60Hz 12 A 1500 W	208-240 V 50/60Hz 6 A 1500 W

ACCESSORIES

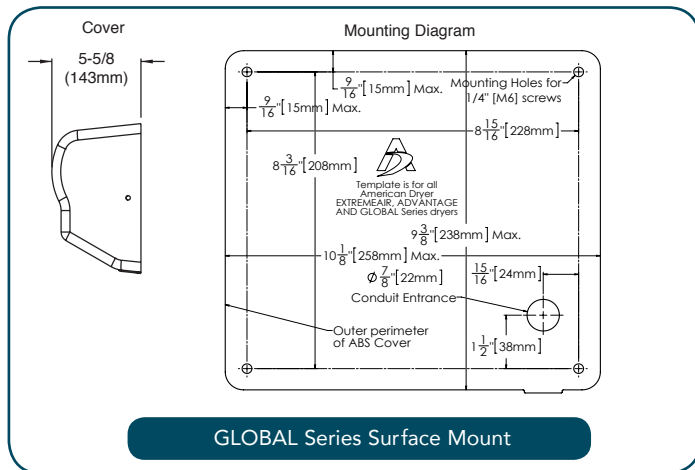


ADA-WG WALL GUARD	ADA-RK RECESS KIT	AP ADAPTER PLATE
-----------------------------	-----------------------------	----------------------------

Accessories Reference Chart	
ADA-WG	ADA Compliant seamless stainless steel wall guard
ADA-RK	ADA Compliant seamless stainless steel recess kit
AP	Stainless steel universal adapter plate

For more information, visit americandryer.com

GX SERIES MOUNTING DIAGRAMS



GLOBAL Series Surface Mount

RECOMMENDED MOUNTING HEIGHTS FROM BOTTOM OF DRYER TO FINISHED FLOOR

	Men	Women	Children	Disabled
All Hand Dryers	44"	42"	32" - 42"	36"



American Dryer, Inc.

33067 Industrial Road | Livonia, MI 48150 | U.S.A.
Toll Free 800.485.7003 U.S. | Ph: 734.421.2400 | Fax 734.421.5580

Web: americandryer.com

Email: sales@americandryer.com

© American Dryer, Inc. All Rights Reserved

Revised December 2014

SAVE 95% VERSUS PAPER TOWELS

GX Series Hand dryers achieve up to a 95% cost savings over paper towels. These savings are realized by eliminating the maintenance and operating expenses associated with paper or linen towels.

"Our school saved over \$21,000 last year with American Dryer!"

Cost Analysis for a Public School

Paper Towel Usage	800 Cases
Total Paper Costs	\$24,000
Hand Dryer Operating Costs	\$2,453
ANNUAL SAVINGS	\$21,547
Payback Time	11 Months

Cost Analysis for a Restaurant

Paper Towel Usage	90 Cases
Total Paper Costs	\$2,025
Hand Dryer Operating Costs	\$96
ANNUAL SAVINGS	\$1,929
Payback Time	12 Months

GENERAL INFORMATION

DRYER PLACEMENT:

Dryers should be placed at least 2 feet apart and at least 12" from washbasin. Do not install dryer over washbasin. Automatic dryers should be at least 18" above any projection which may interfere with the operation of the automatic sensor. In congested areas the dryers should be located to create a flow from the washbasin to the dryer and to the exit. Recommended mounting heights are shown in the table below.

DRYER INSTALLATION:

Dryers must be installed by a licensed electrician. A single phase dedicated 15 amp or 20 amp electrical line is required. Dryers must be properly grounded. One side of dryer should be mounted to a stud. All surface mount dryers are provided with conduit entrances for both in-wall and surface wiring. For indoor use only.

QUANTITY ESTIMATE, HAND DRYER:

Average traffic washroom.....1 dryer per 2 washbasins
Heavy traffic washroom.....1 dryer per washbasin
54" wash fountain.....4 dryers per sink

SHIPPING WEIGHT: ABS 8 lbs, M/C 10 lbs

Printed on Recycled Paper

