



STAINLESS STEEL
SQUARE CORNER SCULLERY
BUDGET SINKS

"400" Series "600" Series

Item #: _____ Qty #: _____
 Model #: _____
 Project #: _____



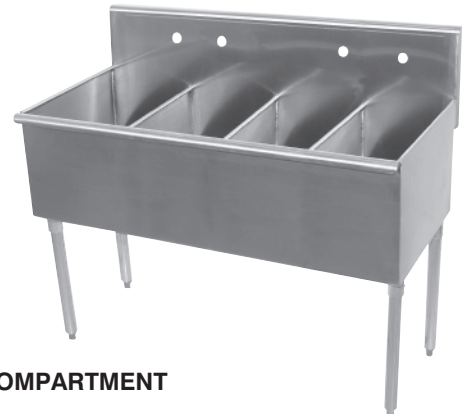
ONE COMPARTMENT



THREE COMPARTMENT



TWO COMPARTMENT



FOUR COMPARTMENT

MATERIAL:

"400" Series is 16 gauge type 430 Series.
 "600" Series is 16 gauge type 304 Series.
 Galvanized tubular legs.
 1" adjustable plastic bullet feet.

CONSTRUCTION:

All heli-arc welded.
 Welded areas blended to match adjacent surfaces and to a satin finish.

MECHANICAL:

Supply is 1/2" hot & cold.
 Faucet holes on 8" O.C.
 Waste drains are 1 1/2" IPS basket type and are included.
 Faucets are not included (see accessories).
 Four compartment units require two faucets.
 Three compartment units with 24" sink bowls require two faucets.

DETACHABLE DRAINBOARDS



Drainboards 36" and 48" are supplied with legs for support.

DETACHABLE DRAINBOARDS

| Size | 18 Ga. S/S "430" | Ship Weight |
|---------|------------------|-------------|
| 18 x 18 | N-5-818 | 10 lbs. |
| 21 x 18 | N-5-18 | 11 lbs. |
| 21 x 24 | N-5-24 | 12 lbs. |
| 21 x 30 | N-5-30 | 22 lbs. |
| 21 x 36 | N-5-36 | 25 lbs. |
| 21 x 48 | N-5-48 | 28 lbs. |
| 24 x 24 | N-54-24 | 18 lbs. |
| 24 x 36 | N-54-36 | 32 lbs. |
| 24 x 48 | N-54-48 | 36 lbs. |



Customer Service Available To Assist You 1-800-645-3166 8:30 am - 8:00 pm E.S.T.

For Orders & Customer Service:
 Email: customer@advancetabco.com or Fax: 631-242-6900

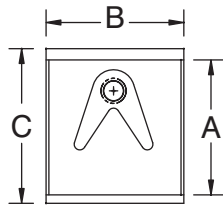
For Smart Fabrication™ Quotes:
 Email: smartfab@advancetabco.com or Fax: 631-586-2933

DIMENSIONS and SPECIFICATIONS

TOL Overall: ± .500" Interior: ± .250"

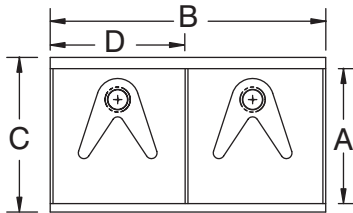
ALL DIMENSIONS ARE TYPICAL

ONE COMPARTMENT



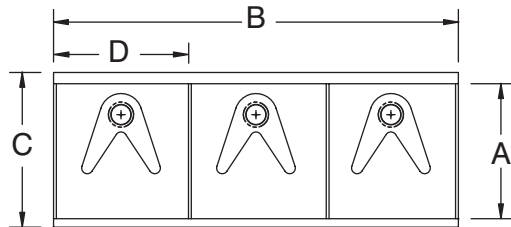
| A | B | C | "400" Series 16 Ga. S/S "430" | "600" Series 16 Ga. S/S "300" | Ship Weight |
|-----|-----|---------|----------------------------------|----------------------------------|----------------|
| 18" | 18" | 21 1/2" | 4-81-18 | 6-81-18 | 45 lbs. |
| 21" | 18" | 24 1/2" | 4-1-18 | 6-1-18 | 47 lbs. |
| 21" | 24" | 24 1/2" | 4-1-24 | 6-1-24 | 53 lbs. |
| 21" | 36" | 24 1/2" | 4-1-36 | 6-1-36 | 66 lbs. |
| 24" | 24" | 27 1/2" | 4-41-24 | 6-41-24 | 53 lbs. |
| 24" | 36" | 27 1/2" | 4-41-36 | 6-41-36 | 69 lbs. |

TWO COMPARTMENTS



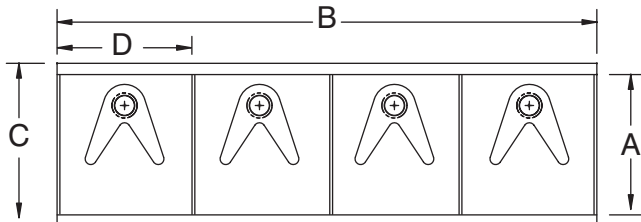
| A | B | C | "400" Series 16 Ga. S/S "430" | "600" Series 16 Ga. S/S "300" | Ship Weight | |
|-----|-----|---------|----------------------------------|----------------------------------|----------------|----------|
| 21" | 36" | 24 1/2" | 18" | 4-2-36 | 6-2-36 | 73 lbs. |
| 21" | 48" | 24 1/2" | 24" | 4-2-48 | 6-2-48 | 86 lbs. |
| 21" | 60" | 24 1/2" | 30" | 4-2-60 | 6-2-60 | 100 lbs. |
| 24" | 48" | 27 1/2" | 24" | 4-42-48 | 6-42-48 | 88 lbs. |
| 24" | 60" | 27 1/2" | 30" | 4-42-60 | 6-42-60 | 108 lbs. |

THREE COMPARTMENTS



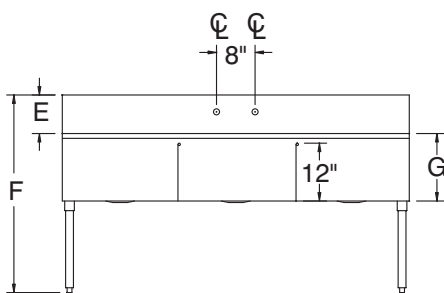
| A | B | C | "400" Series 16 Ga. S/S "430" | "600" Series 16 Ga. S/S "300" | Ship Weight | |
|-----|-----|---------|----------------------------------|----------------------------------|----------------|----------|
| 21" | 36" | 24 1/2" | 12" | 4-3-36 | 6-3-36 | 78 lbs. |
| 21" | 48" | 24 1/2" | 16" | 4-3-48 | 6-3-48 | 91 lbs. |
| 21" | 54" | 24 1/2" | 18" | 4-3-54 | 6-3-54 | 98 lbs. |
| 21" | 72" | 24 1/2" | 24" | 4-3-72 | 6-3-72 | 115 lbs. |
| 24" | 60" | 27 1/2" | 20" | 4-43-60 | 6-43-60 | 105 lbs. |
| 24" | 72" | 27 1/2" | 24" | 4-43-72 | 6-43-72 | 120 lbs. |

FOUR COMPARTMENTS

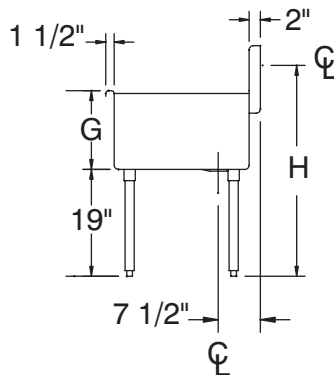


| A | B | C | "400" Series 16 Ga. S/S "430" | "600" Series 16 Ga. S/S "300" | Ship Weight | |
|-----|-----|---------|----------------------------------|----------------------------------|----------------|----------|
| 21" | 48" | 24 1/2" | 12" | 4-4-48 | 6-4-48 | 96 lbs. |
| 21" | 60" | 24 1/2" | 15" | 4-4-60 | 6-4-60 | 115 lbs. |
| 21" | 72" | 24 1/2" | 18" | 4-4-72 | 6-4-72 | 120 lbs. |

FRONT VIEW



PLUMBING ROUGH-IN



| | All Except 24" x 24" Bowls | 24" x 24" Bowls Only |
|---|-------------------------------|-------------------------|
| E | 8" | 6" |
| F | 41" | 39" |
| G | 14" | 13" |
| H | 37 3/4" | 35 3/4" |

