



STAINLESS STEEL

# FLUSH-WITH-FLOOR MOP SINK



Includes  
Stainless Steel Strainer  
Basket with Handle

Item #: \_\_\_\_\_ Qty #: \_\_\_\_\_  
 Model #: \_\_\_\_\_  
 Project #: \_\_\_\_\_



Front  
Anti-Splash Guard

### FEATURES:

- Easy Mop Bucket Roll-In Design.
- Side Splash on three sides.
- 4" O.D. - 3" Long Plumbing Sleeve.
- Front Anti-Splash Guard
- Waste receptacle will accommodate up to a 4" waste pipe.
- Removable perforated stainless steel strainer basket with handle provided.
- Pitched towards waste.
- Includes stainless steel "Subway Style" grating.
- Grating is closely spaced between bars to prevent casters from getting trapped

### CONSTRUCTION:

All TIG welded.  
 Welded areas blended to match adjacent surfaces and to a satin finish

### MECHANICAL:

16 Gauge type "304" series stainless steel sink bowl.

### GRATING SIZE:

21 1/4" (Left to Right) x 21 7/8" (Front to Back)

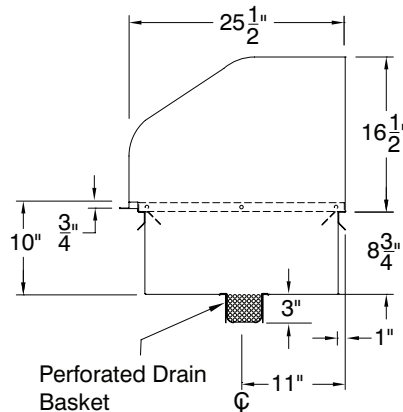
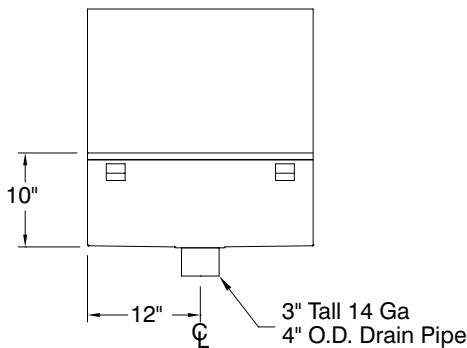
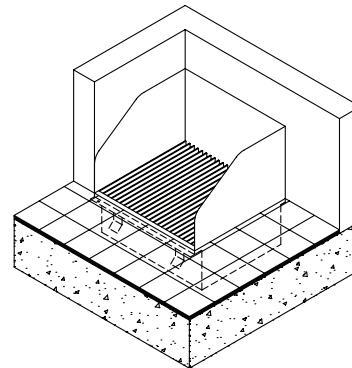
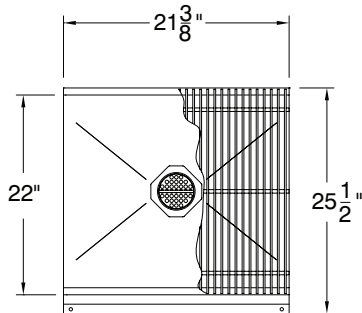
Model #	Overall Dimension	Approx. Wt.	Approx. Cu.
9-OP-24FM	21 3/8" x 25 1/2" x 10"	115 lbs.	9

## DIMENSIONS and SPECIFICATIONS

TOL ± .125"

ALL DIMENSIONS ARE TYPICAL

9-OP-24FM



Customer Service Available To Assist You **1-800-645-3166** 8:30 am - 8:00 pm E.S.T.

For Orders & Customer Service:

Email: [customer@advancetabco.com](mailto:customer@advancetabco.com) or Fax: 631-242-6900

For Smart Fabrication™ Quotes:

Email: [smartfab@advancetabco.com](mailto:smartfab@advancetabco.com) or Fax: 631-586-2933