



STAINLESS STEEL Glass Rack Storage Units **NSF** 21" Wide Units

Item #:	_____	Qty #:	_____
Model #:	_____		
Project #:	_____		



Open Top
Holds Up To 4 Glass Racks
(CROR-24 Shown)



Drainboard Top
Holds Up To 3 Glass Racks
(CRCR-24-CT Shown)



Slanted Top
Holds Up To 2 Glass Racks
(CRSR-24 Shown)

FEATURES:

CROR-24 - Open base style unit.
CRCR-24 Series - Enclosed base unit with either a flat top or embossed and seamless drainboard, with drain in the center.
CRSR-24 - Open base style unit with slanted top. Can hold liquor and glass racks.
 Stainless steel legs with adjustable bullet feet.
 4" backsplash.

MATERIAL:

20 gauge, 300 stainless steel
Backsplash: 22 gauge, 300 stainless steel
Glass Rack Slides: 18 gauge, 300 stainless steel
Drainboard: 22 gauge, 300 stainless steel (CRCR-24-CT only)
Legs: 1 5/8" O.D. 16 gauge, stainless steel with adjustable plastic bullet feet

MECHANICAL:

1" IPS drain on bottom.
CRCR-24 Series - 1" IPS drain on top.

Model #	Description	Overall Length	Btm. Drain Location	Glass Rack Capacity*	Approx. Weight	Approx. Cu. Ft.
CROR-24	Open Base	23"	11 1/2"	4	34 lbs.	13
CRCR-24	Enclosed Base w/ Flat Top	23"	N/A	3	34 lbs.	13
CRCR-24-CT	Enclosed Base w/ Corrugated Top	23"	11 1/2"	3	40 lbs.	13
CRSR-24	Slanted Top (For Liquor & Glass Racks)	23"	11 1/2"	2	34 lbs.	13

*Sizes Of Glass Racks Vary



Customer Service Available To Assist You 1-800-645-3166 8:30 am - 8:00 pm E.S.T.

For Orders & Customer Service:
 Email: customer@advancetabco.com or Fax: 631-242-6900

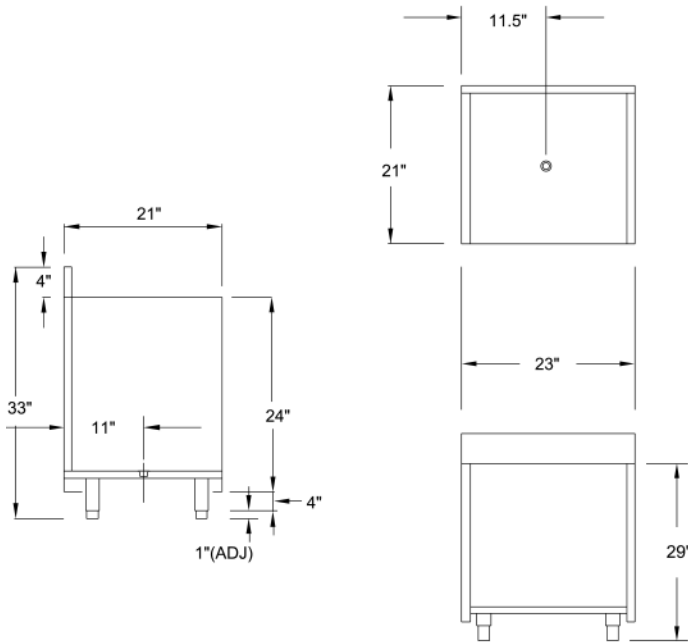
For Smart Fabrication™ Quotes:
 Email: smartfab@advancetabco.com or Fax: 631-586-2933

DIMENSIONS and SPECIFICATIONS

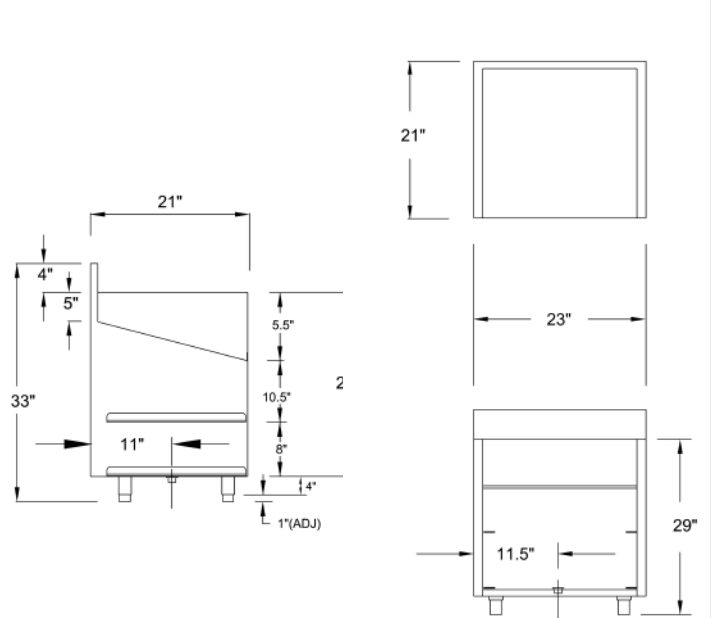
TOL Overall: ± .500" Interior: ± .250"

ALL DIMENSIONS ARE TYPICAL

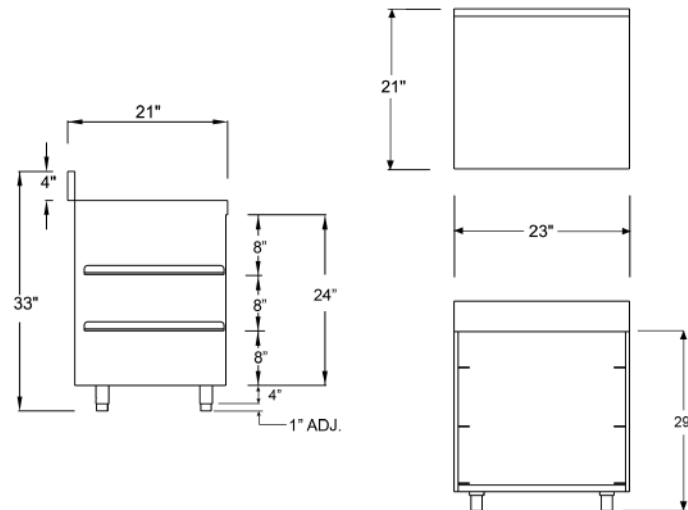
CROR-24



CRSR-24



CRCR-24



CRCR-24-CT

