

# STAINLESS STEEL Drop-In Bar Hand Sinks

## With Deep Drawn Sink Bowl

### Deep Drawn Seamless Sink Bowl



Item #: \_\_\_\_\_ Qty #: \_\_\_\_\_  
Model #: \_\_\_\_\_  
Project #: \_\_\_\_\_



**DI-1-5**

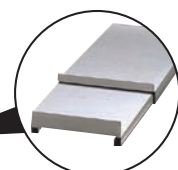
### SPACE SAVER



**DI-1-25**



**D-24-SIBL**



Includes Ice Bin  
w/ Sliding  
Stainless Steel Cover

### FEATURES:

One piece **Deep Drawn** sink bowl.  
Deck mounted faucet.

#### D-24-SIBL:

11" deep insulated ice bin.  
Rubber thermal breaker to reduce condensation.  
Supplied with stainless steel hinged cover.

### MECHANICAL:

1" IPS drain (ice bin)  
1 1/2" IPS, 3 1/2" basket drain (hand sink)  
DI-1-5 & DI-1-25 include K-52 deck mount faucet.  
D-24-SIBL include K-51 deck mount faucet.

**Faucet meets federal lead free standards.**

### MATERIAL:

**Jacket:** 20 gauge galvanized steel  
**Ice Bin:** 20 gauge, 300 stainless steel  
**Cover:** 20 gauge stainless steel (D-24-WSIBL and D-24-WSIBL2 only)  
**Molding:** Extruded black polyethylene thermal breaker marine edge  
**Insulation:** 2lbs. density foam-in-place insulation

### OPTIONAL:

**D-12:** Replacement sliding stainless steel cover  
**K-316-LU:** Add wrist handles

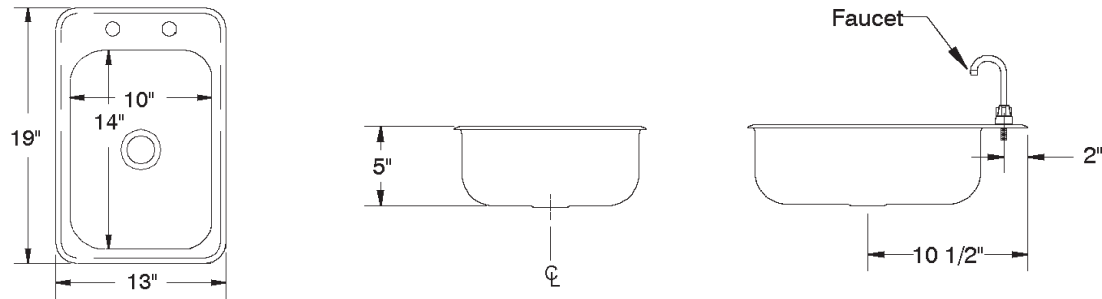
Model #	Description	Outside Dimensions	Cut-Out Size	Ice Capacity	Approx. Weight	Approx. Cu. Ft.
DI-1-5	Hand Sink	13" x 19"	12 1/4" x 18 1/4"	N/A	12 lbs.	2
DI-1-25	Space-Saver Hand Sink	12" x 14"	11 1/4" x 13 1/4"	N/A	8 lbs.	2
D-24-SIBL	Hand Sink w/ Ice Bin	21 1/4" x 18"	20 3/8" x 15 1/4"	23 lbs.	30 lbs.	5

# DIMENSIONS and SPECIFICATIONS

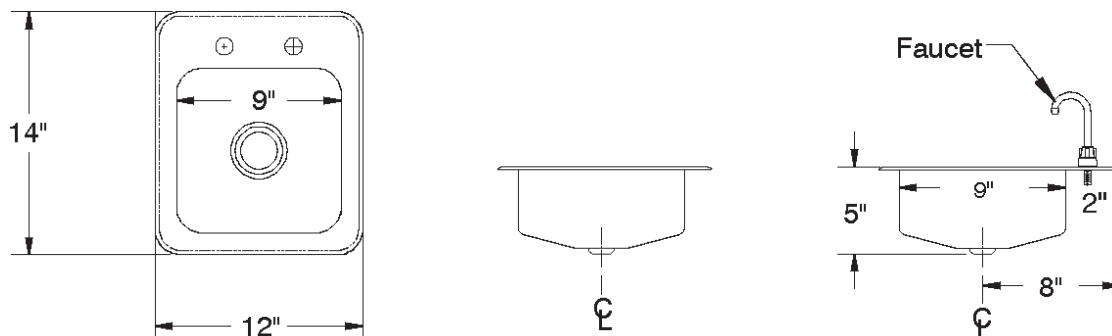
TOL Overall:  $\pm .500"$  Interior:  $\pm .250"$

ALL DIMENSIONS ARE TYPICAL

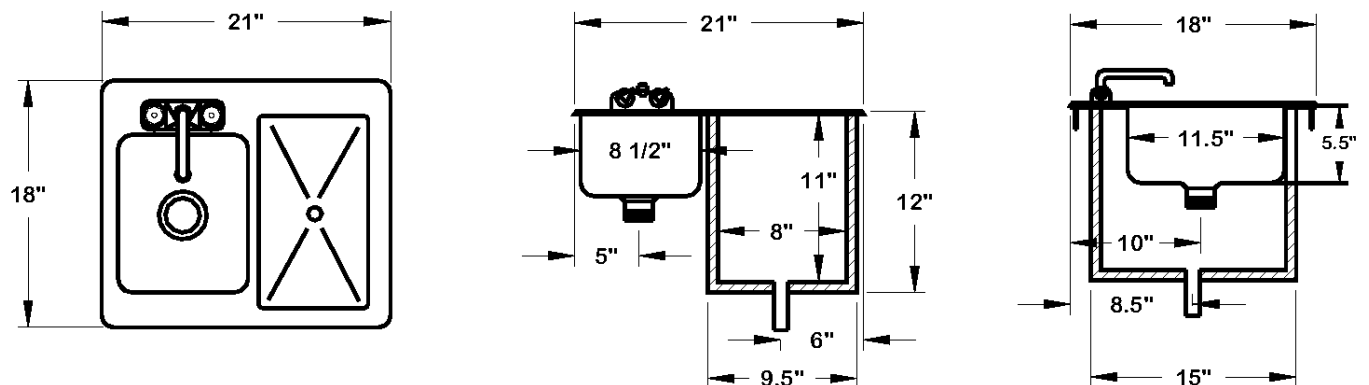
## DI-1-5



## DI-1-25



## D-24-SIBL



ADVANCE TABCO is constantly engaged in a program of improving our products. Therefore, we reserve the right to change specifications without prior notice.

© ADVANCE TABCO, DECEMBER 2014