

# 15" Wide WALL CABINETS



**Item #:** \_\_\_\_\_ **Qty #:** \_\_\_\_\_

**Model #:** \_\_\_\_\_

**Project #:** \_\_\_\_\_



**SLIDING DOORS**  
(Shown with Optional Door Lock)



**HINGE DOORS**  
(Shown with Optional Door Lock)



**OPEN**

## THREE AVAILABLE OPTIONS!

	WCS Series	WCO Series	WCH Series		
L	Sliding Doors Style	Open Style	Hinge Doors Style	Hinge Doors Sizes	Weight
36"	-	WCO-15-36	WCH-15-36	18"	85 lbs.
48"	WCS-15-48	WCO-15-48	WCH-15-48	24"	105 lbs.
60"	WCS-15-60	WCO-15-60	WCH-15-60	30"	125 lbs.

### FEATURES:

Wall hung cabinet with intermediate shelf.  
Sloping Top enhances sanitary configuration.

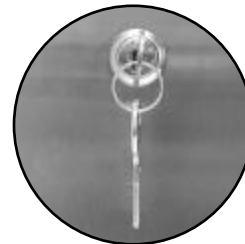
### CONSTRUCTION:

All TIG welded using the TIG process.  
Welded seams finished to match adjacent surfaces.  
Unit polished to a satin finish.

### MATERIAL:

18 gauge type 430 series stainless steel.  
Stainless steel hinges and handles.  
Mounting hardware is not supplied.

**OPTIONAL  
DOOR LOCK  
TA-46**

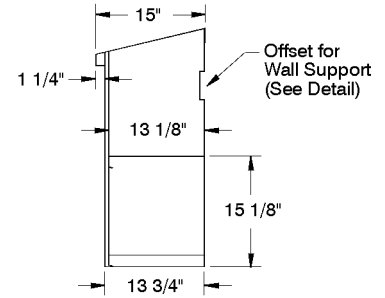
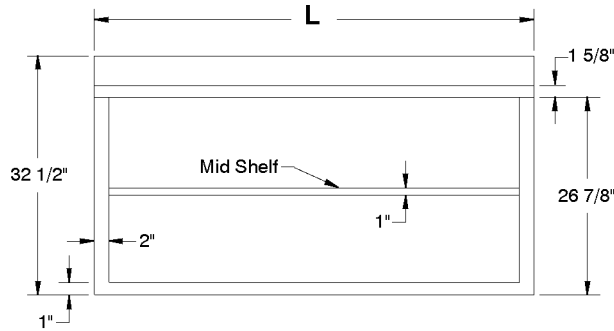


# DETAILS and SPECIFICATIONS

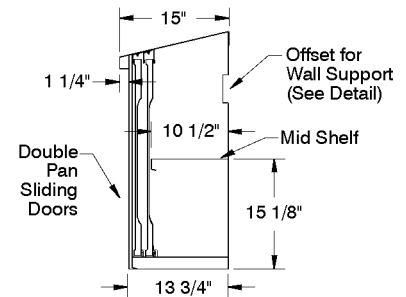
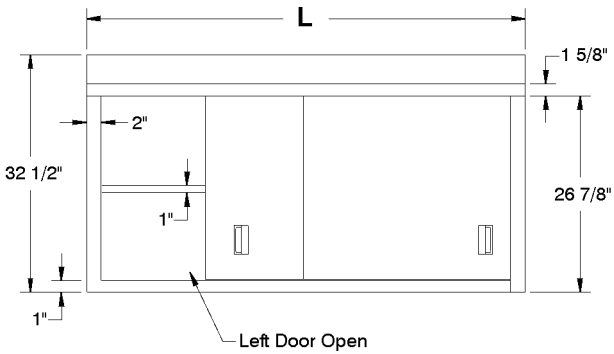
TOL ± .500"

ALL DIMENSIONS ARE TYPICAL

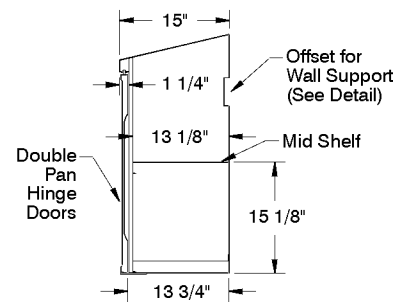
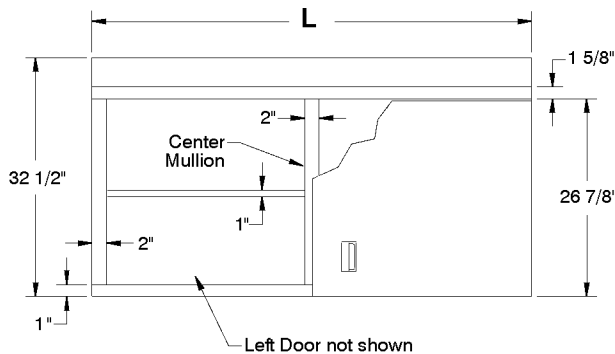
## WCO-Series Open Style



## WCS-Series Sliding Door Style



## WCH-Series Hinge Door Style



### OFFSET DETAIL

