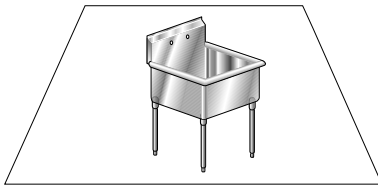




HAND SINKS

ELECTRIC EYE

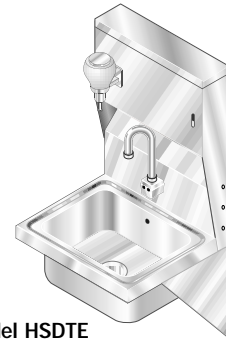
Item# _____ Project _____



Model HSFE
Includes basket and Electronic Faucet



Model HSDE
Includes basket, P-Trap, overflow and Electronic Faucet



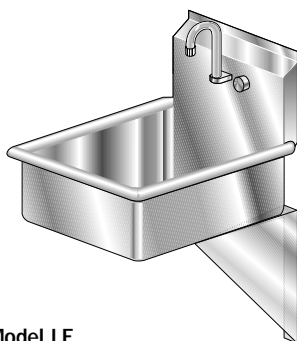
Model HSDTE
Includes basket, P-Trap, overflow, Soap and towel dispenser and Electronic Faucet



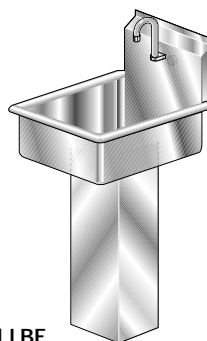
Model HSTAE
Includes basket, P-Trap, overflow, Soap and towel dispenser, Electronic Faucet and S/S apron



Model HSBE
Includes basket, S/S Base and Electronic Faucet



Model LE
Includes 21 x 16 x 8 bowl, wall hung, basket and Electronic Faucet



Model LBE
Includes 21 x 16 x 8 bowl, S/S Base, basket and Electronic Faucet

NOTE: ALL ELECTRIC FAUCETS ARE BATTERY OPERATED

HAND SINK ACCESSORIES

Model #	Description
S-54	Soap Dispenser
S-55	Paper Dispenser
S-56	P-Trap
S-57	Wrist Handle (add on)
S-58	Wrist Handle & FCT (Repl.)
S-59	Metered Faucet
S-60	Knee Valves
S-61	Pedestal Base w/Foot Valve
S-62	Eye Wash Attachment
S-63	Hands-Free Wand
S-64	H.D. FCT Upgrade (T & S)
S-65	Replacement Faucet (CH)
S-66	Replacement Foot Pedals
S-67	Replacement Gooseneck
S-68	Side Splash One Side
S-69	Side Splash Two Sides
S-74	Drink Bubbler

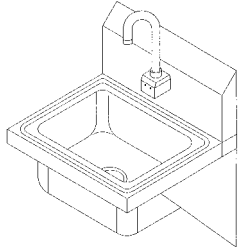
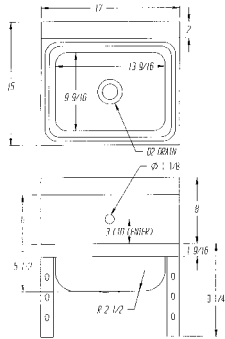
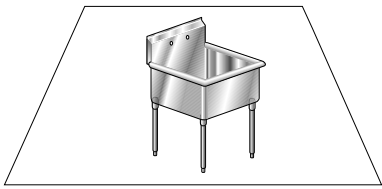
email - sales@aeromfg.com

AERO MANUFACTURING COMPANY • 310 ALLWOOD ROAD, CLIFTON, NEW JERSEY 07012 • VOICE 973.473.5300 FAX 973.473.3794

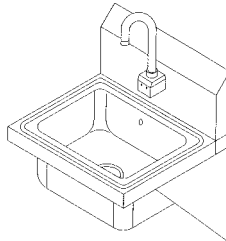
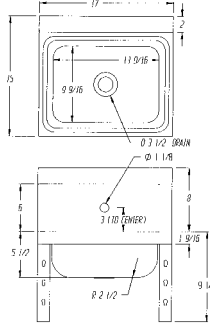


DIMENSIONAL SPECIFICATIONS

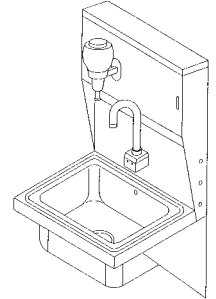
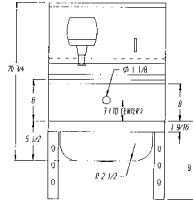
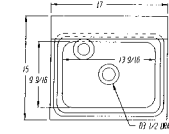
ELECTRIC EYE HAND SINKS



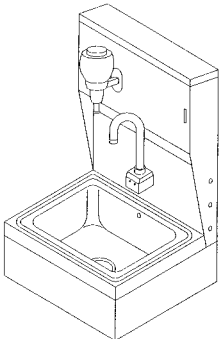
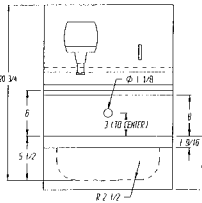
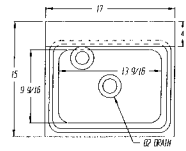
Model HSFE



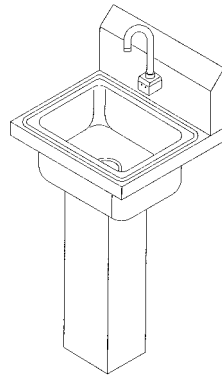
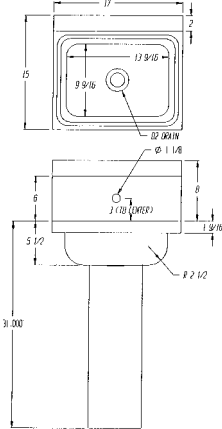
Model HSDE



Model HSDTE



Model HSTAE

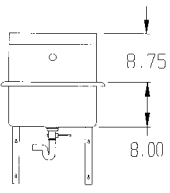
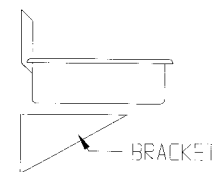
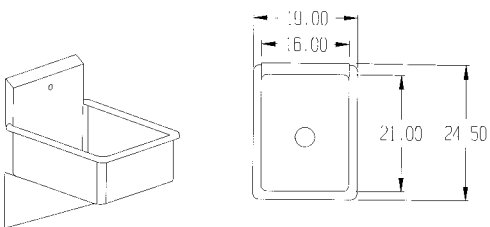


Model HSBE

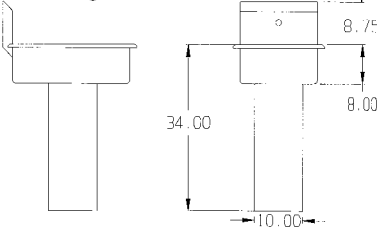
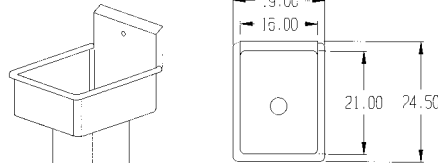


NOTE: ALL ELECTRIC FAUCETS ARE BATTERY OPERATED

DIMENSIONAL SPECIFICATIONS



Model LE



Model LBE

BOWL Width	BOWL Length	UNIT Width	UNIT Length	Model #	Ship Weight	Cubic Feet
10	14	15	17	HSFE	14	2
10	14	15	17	HSDE	15	2
10	14	15	17	HSDTE	30	2
10	14	15	17	HSTAE	35	2
10	14	15	17	HSBE	30	2
21	16	24	19	LE	25	4
21	16	24	19	LBE	50	4

All dimensions are typical (tol. ±1/8"). For Accessories and Options see pages FS-7A, FS-7B.

email - sales@aeromfg.com

AERO MANUFACTURING COMPANY • 310 ALLWOOD ROAD, CLIFTON, NEW JERSEY 07012 • VOICE 973.473.5300 FAX 973.473.3794