



Item No. \_\_\_\_\_

## 20qt PLANETARY MIXER BMPME20

### Features:

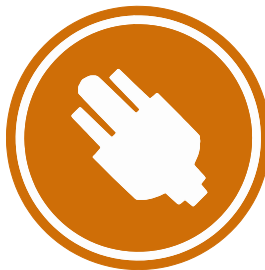
- Gear driven.
- Professional countertop style.
- 1.5HP (1.1kW) motor offers enough powerj to mix stiffer doughs and larger batches.
- All metal and die-cast aluminum body.
- Transmission is made of hardened allow steel gears.
- All shafts are mounted in ball bearings.
- Planetary mixing action ensures perfect results.
- Simple hand lift tool change and bowl removal.
- Safety guard is standard, and provides automatic shut-off when guard is opened at any speed.

### Other specifications:

- 20qt stainless steel bowl.
- Dough Hook.
- Flat Beater.
- Wire Whip.
- Plug N' Go electrical for easy installation.



BakeMax<sup>®</sup> Planetary Mixers provide durability, long life and excellent mixing performance. A wide range of sizes to choose from provides clients with the exact mixer for their particular needs. They are safe, easy to use and capable of a broad range of dough and food mixing applications.



Think Quality, Value, Service.....Think

**BakeMax<sup>®</sup>**

# 20qt PLANETARY MIXER BMPME20

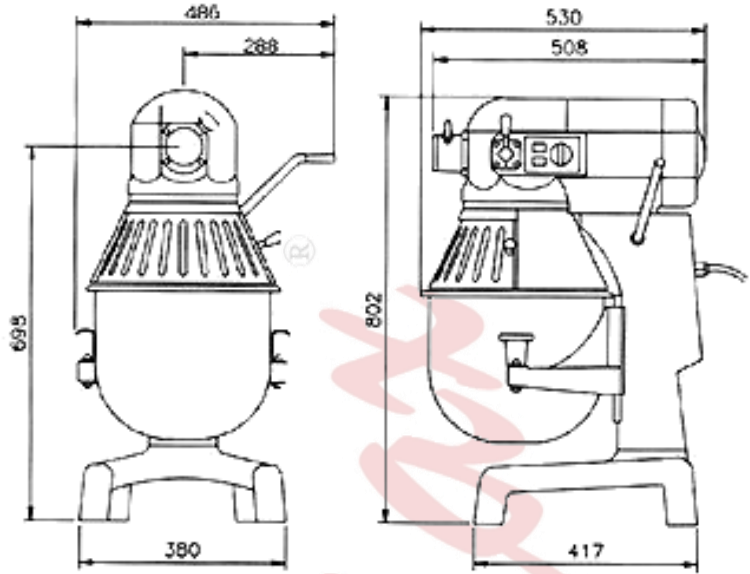
## Volume

External and Internal Dimensions (D x W x H)

Model	External
BMPME20	23" x 23" x 31"

## Capacity

Product	Amount
Capacity	20Qt



## Electrical Information

Model	Voltage	Phase	Amps	Watts	Hertz	NEMA
BMPME20	110	1	20	2200	60	5-30P



Authorized Dealer:



BakeMax Manufacturing, Inc.  
170 Millenium Blvd, Moncton, NB, E1C 1M8  
Toll Free: 1-800-565-BAKE  
Telephone: 1-506-858-8990  
Fax: 1-506-859-6929

Think Quality, Value, Service.....Think

**BakeMax**<sup>®</sup>

Toll Free: 1-800-565-BAKE

Web Site: [www.bakemax.com](http://www.bakemax.com)

E-mail: [sales@bakemax.com](mailto:sales@bakemax.com)

Printed in Canada