

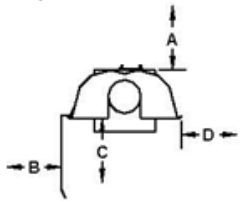
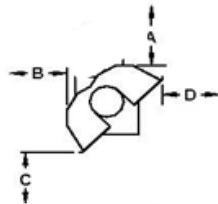
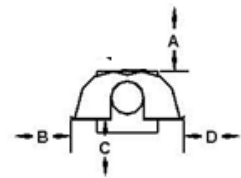
BERNER PATIO HEATERS Deco-Tube

Compact Comfort

Two-Stage, Dual Comfort Series

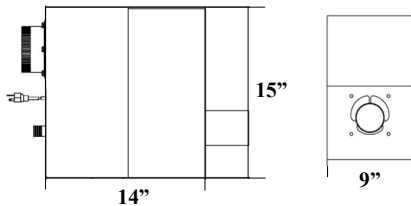
| <u>SPECIFICATIONS</u> | <u>Natural Gas</u> | <u>Propane</u> |
|-----------------------|--|--|
| Finish | Powder Coated Black (Standard) Stainless Steel (Optional) | Powder Coated Black (Standard) Stainless Steel (Optional) |
| Manifold Pressure | 3.5" W.C. (Hi), 2.4" W.C. (Lo) | 10.5" W.C. (Hi), 6.2" W.C. (Lo) |
| Inlet Pressure | 5.0" W.C. (Min), 14.0" W.C. (Max) | 11.5" W.C. (Min), 14.0" W.C. (Max) |
| Inlet Connection | 1/2" Female NPT | |
| Electric Supply | 120 VAC, 60 HZ, 1 Amp: 36" cord with grounded 3 prong plug | |
| Control | Two-Stage Switch - Part #BPA-EE20 | |

CLEARANCES TO COMBUSTIBLES

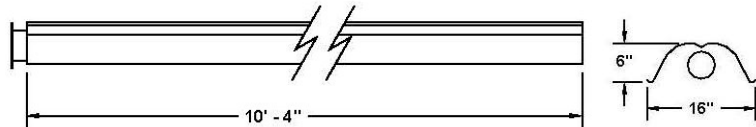


| Reflector Configuration | Dimension | Model No. | | | |
|-------------------------|-----------|---|---|---|---|
| | | BPD-ET3040 30,000 - 40,000 btu/hr | BPD-ET4560 45,000 - 60,000 btu/hr | BPD-ET6080 60,000 - 80,000 btu/hr | BPD-ET75100 75,000 - 100,000 btu/hr |
| Standard | A | 2" | 2" | 2" | 2" |
| | B | 18" | 25" | 26" | 30" |
| | C | 45" | 58" | 67" | 67" |
| | D | 18" | 25" | 30" | 30" |
| 45° Tilt | A | 4" | 4" | 4" | 4" |
| | B | 4" | 4" | 4" | 4" |
| | C | 40" | 50" | 67" | 67" |
| | D | 38" | 46" | 58" | 58" |
| One Side Extension | A | 2" | 2" | 2" | 2" |
| | B | 4" | 4" | 4" | 4" |
| | C | 50" | 58" | 63" | 73" |
| | D | 35" | 38" | 42" | 45" |

Burner Dimensions



Reflector Dimension



WARRANTY

- Burner and Controls = 3 years
- Alumized Heat Exchanger with Post Purge = 10 years

