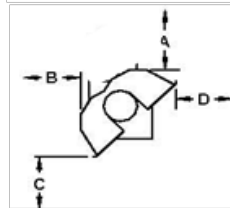
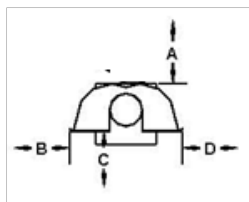


# BERNER PATIO HEATERS Deco-Tube Outdoor Only

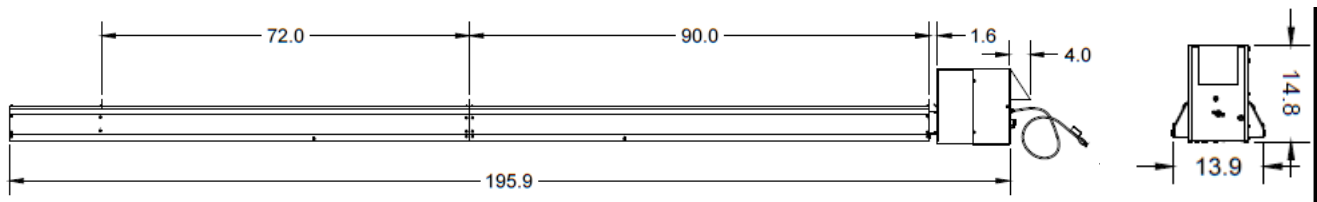
## High Output Radiant Patio Heater

Outdoor Only Series		
SPECIFICATIONS	Natural Gas	Propane
Finish	Powder Coated Black (Standard) / Stainless Steel (Optional)	
Manifold Pressure	3.3" W.C. (Hi), 2.0" W.C. (Lo)	10.2" W.C. (Hi), 6.4" W.C.
Inlet Pressure	5.0" W.C. (Min), 14.0" W.C. (Max)	11.5" W.C. (Min), 14.0" W.C. (Max)
Inlet Connection	1/2" Female NPT	
Electric Supply	120 VAC, 60 HZ, 1 Amp: 72" cord with grounded 3 prong plug	
Control	Two-Stage Switch - Part #EE020 (optional)	

### CLEARANCES TO COMBUSTIBLES



Reflector Configuration	Dimension	Model No.
		BPD-ETO100 75,000 - 100,000 btu/hr
Standard	A	4"
	B	29"
	C	73.5"
	D	29"
45° Tilt	A	8"
	B	2.5"
	C	55.5"
	D	43"
Ends (Both Sides)		4"



### WARRANTY

Burner and Controls = 1 years  
 Aluminized Heat Exchanger with  
 Post Purge = 10 years

