



# BEVERAGE-AIR

3779 Champion Blvd., Winston-Salem, NC 27105  
1-888-845-9800 Fax# 1-336-245-6453  
<http://www.Beverage-Air.com>

## Commercial Refrigeration Equipment General Specification

### 3 Year Parts/Labor Warranty Additional 2 Year Compressor Warranty

#### CABINET CONSTRUCTION

- Exterior—Stainless steel exterior.
- Interior—Stainless steel interior.
- Insulation—2" foamed-in-place CFC and HCFC-free polyurethane insulation.
- Will accept food carts (one per section) up to 27" wide x 29" deep x 64" high (supplied by others).
- Attachable door ramp of reinforced stainless steel includes a one-inch rise to the reinforced stainless steel cabinet floor.
- Stainless steel cart guides are included in the interior.

#### DIGITAL THERMOMETER

- Exterior digital thermometer provides a digital display of cabinet temperatures.

#### REFRIGERATION SYSTEM

- Top mount, environmentally friendly refrigeration system maintains product temperatures at 0°F.
- Factory engineered, self-contained refrigeration system uses environmentally friendly (CFC and HCFC-free) R404A refrigerant.

#### DOORS

- Solid door configuration.
- Anti-microbial door handles and door locks are standard.
- Field reversible doors and cam lift hinges standard. Positive seal self-closing door(s) with 120° stay open feature.
- Snap-in door gaskets of one piece construction, removable without tools for ease of cleaning.
- Wiper gasket at bottom of door seals door to ramp.

#### MODEL FEATURES

- Incandescent interior lighting.
- UL-EPH and CUL for open food product.

Item No. \_\_\_\_\_  
Quantity \_\_\_\_\_

**TOP MOUNTED  
ROLL-IN FREEZERS  
PFI SERIES  
SOLID DOORS**

**MODELS:  
PFI1-1AS  
PFI2-5AS**



**PFI1-1AS**



**PFI2-5AS**

Available From:



\*Note: Not all markings may apply to all model variations.

<b>Model Specified</b> _____	<b>Store#</b> _____
<b>Location</b> _____	<b>Quantity</b> _____



**BEVERAGE-AIR**

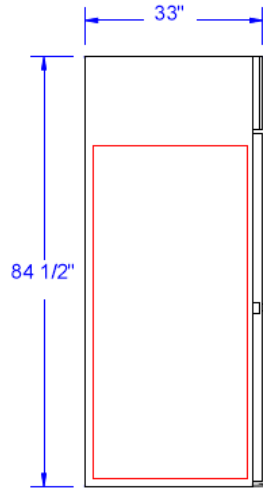
**Top Mount, Roll-In Freezers**

Models: PFI1, PFI2

(PFI) Roll-In

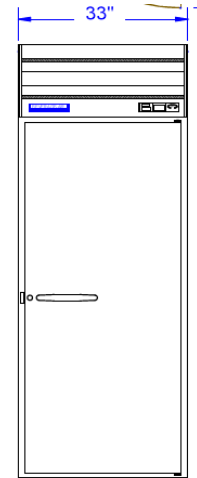
**PLAN VIEWS**

MODEL	PFI1-1AS	PFI2-5AS
<b>EXTERNAL DIMENSIONAL DATA</b>		
Length Overall (inches)	33"	66"
Length Overall (mm)	838	1676
Depth Overall—(inches) less handle	33"	33"
Depth Overall—(mm) less handle	838	838
Height Overall— (inches) less casters	84 1/2"	84 1/2"
Height Overall— (mm) less casters	2146	2146
Number of doors	1	2
<b>INTERNAL DIMENSIONAL DATA</b>		
NET Capacity (cubic ft.)	34.3	73.4
NET Capacity (Liters)	971	2079
Cart Capacity	1	2
<b>ELECTRICAL DATA</b>		
Volts*	115	208-230*
Full Load Amperes	10.6	10.5
<b>REFRIGERATION DATA</b>		
Horsepower	1/2	1
<b>WEIGHT DATA</b>		
Gross Weight (Crated lbs)	562	814
Gross Weight (Crated kg)	255	369



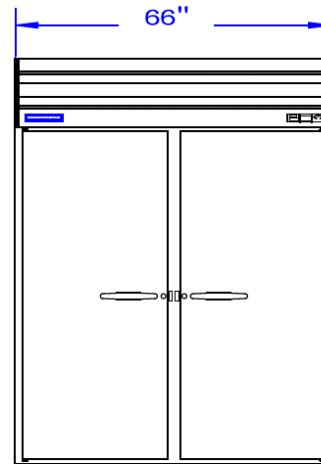
END

PFI1-1AS  
PFI2-5AS



FRONT

PFI-1AS



FRONT

PFI2-5AS



**Note:** Not all markings may apply to all model variations.

**\*Note:** 208-230 volt units are designed for field wiring.

**BEVERAGE-AIR® CORPORATION**

3779 Champion Blvd. • Winston-Salem, NC 27105 USA • (336) 245-6400 • Fax (336) 245-6453 • (888) 845-9800 • www.beverage-air.com

Specifications are subject to change without prior notice. 06/13