



Double Flange Next Generation Shelves

Stainless Steel Wall Shelves



Use your smart phone to scan the above QR code to visit our website: www.bk-resources.com

Certifications:



Features:

- Flat solid surfaces throughout
- Easy clean-ability for health codes
- Typical food service configuration
- Top flange for added mounting support
- Bottom flange for added strength

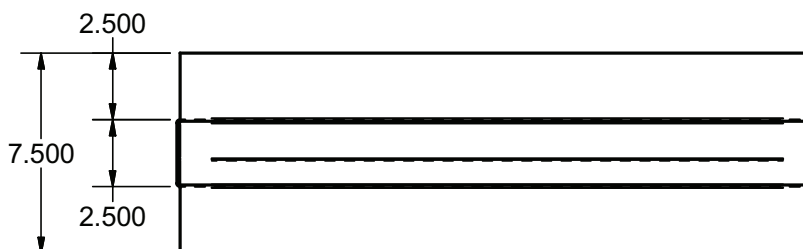
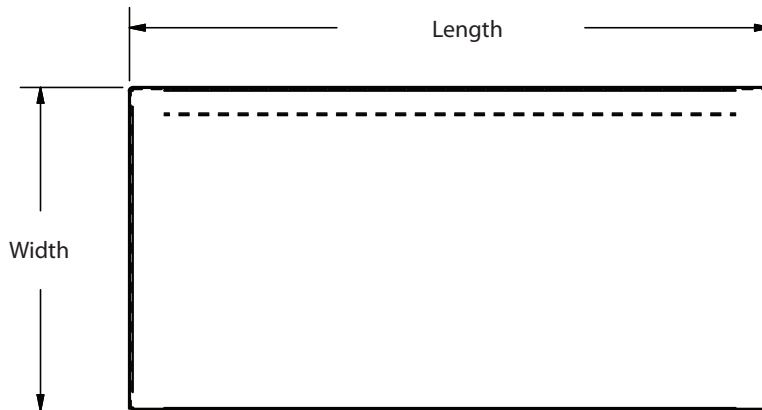
Material:

- T-304 18 ga. Stainless Steel

Options:

- Pot Rack with Hooks

Length	T-304 S/S 16" Width	# of Support Brackets
24"	BK2-SNGWS-16-2	2
36"	BK2-SNGWS-16-3	2
48"	BK2-SNGWS-16-4	3
60"	BK2-SNGWS-16-5	3
72"	BK2-SNGWS-16-6	4
96"	BK2-SNGWS-16-8	5



PRODUCT DATA SHEET

BK RESOURCES

