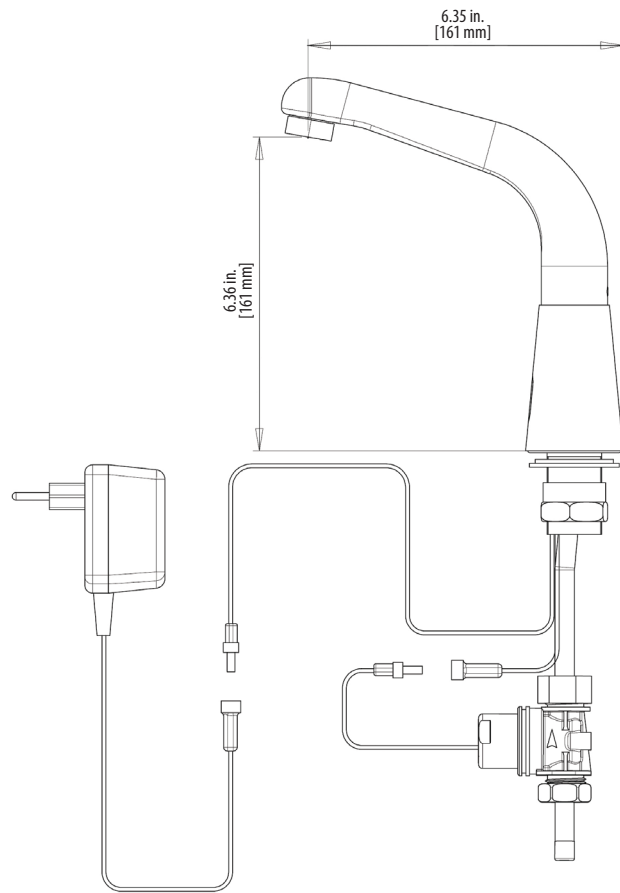
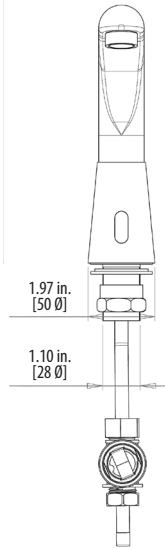




Use your smart phone to scan the above QR code to visit our website: www.bk-resources.com

# Jet Faucet

Model: BKF-JET-G, Lead Free



## Product Specifications:

- Single Hole Polished Chrome Plated Touch-Free Faucet for Cold or Premixed Water
- Lead Free Product
- 0.5 GPM (1.9 L/min) Vandal Resistant Aerator
- Preset Sensor Range: 8 21/22" Adjustable
- Minimum Sensor Range: 3 5/32
- Maximum Sensor Range: 11 13/16"
- Available with a 9V Battery or a 9V Transformer
- Operating Pressure: 7-100 PSI
- Max Operating Temperature: 158° F
- Security Time: The Faucet will Shut Down Automatically After 90 Seconds
- Adjustable Sensor Settings by Remote Control

## Maintenance:

DO NOT use steel wool or cleansing agents containing alcohol, acid, abrasives or the like. Use of any prohibited cleaning or maintenance products or substances could damage surface of the faucet. For surface cleaning of faucet use ONLY soap and water, then wipe dry with clean cloth or towel. When cleaning bathroom tile, the faucets should be protected from any splattering of harsh cleansers.

## Certifications:



ADA Compliant



PRODUCT SPECIFICATION SHEET

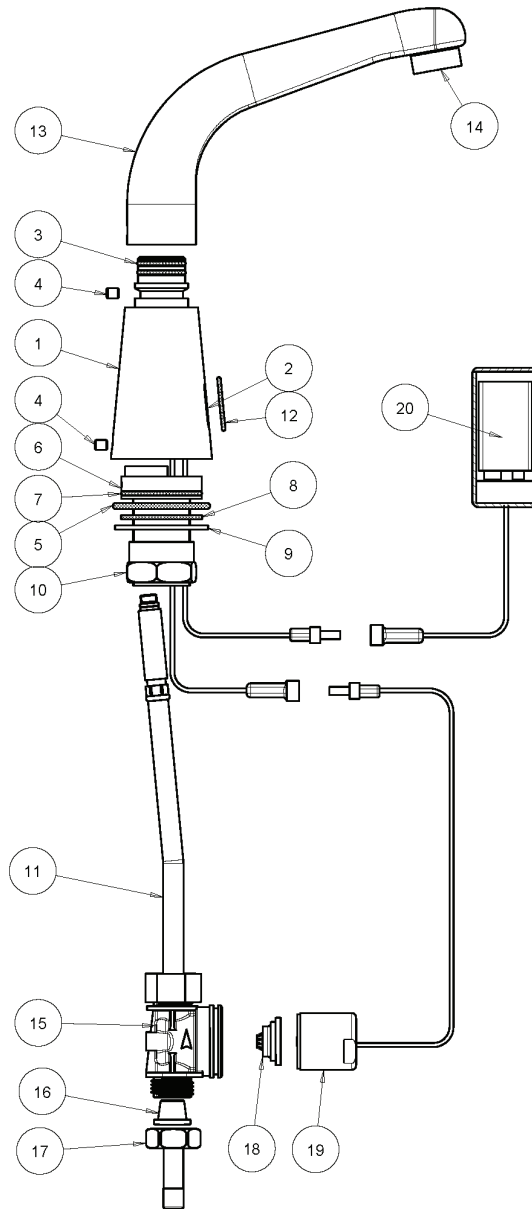
RESOURCES





## Jet Faucet

Model: BKF-JET-G, Lead Free



### Exploded Parts Detail:

Diagram #	Quantity	Part Number	Description
1	1	BKF-JET-G	Faucet Body
2	1	JET-IRS	Infra Red Sensor
3	1	JET-SO	Spout O-Ring
4	1	JET-SS	Set Screw
5	1	JET-BO	Base O-Ring
6	1	JET-INSERT	Insert
7	1	JET-BO2	Base O-Ring
8	1	JET-BG	Base Gasket
9	1	JET-DISK	Base Disk
10	1	JET-MN	Mounting Nut
11	1	JET-WL	Water Line
12	1	JET-SEN-O	Sensor O-Ring
13	1	JET-SPT	Spout

Diagram #	Quantity	Part Number	Description
14	1	JET-AER	Aerator
15	1	JET-SB	Solenoid Body
16	1	JET-FILTER	Filter
17	1	JET-N	Nipple
18	1	JET-D	Diaphragm
19	1	JET-SV	Solenoid Valve
20	1	JET-9V	Battery Box

PRODUCT SPECIFICATION SHEET

RESOURCES

