

GENERAL INFORMATION

Project Name: _____
Item: _____
Quantity: _____
Model: HSHW-ST
Length: _____

GENERAL SPECIFICATION

Materials

- 14 Gauge Brushed Finish Type 304 Stainless Hand Sink and 18 Gauge Body Panels
- Mini Basket Drain
- 2-1/2" Gallon Self-Contained 1,500 Watt Hot Water Heater
- Power 120V/15A Duplex Receptacle Required

Construction

- NSF Standard 2 Construction
- Fully Welded Coved Corner Sinks
- Marine Edge around Sink Top
- Removable Front for Plumbing Access
- 28" Height for ADA Compliance when Mounted 6" off of Floor
- Designed to be Wall Mounted
- Open Back Design
- Cutout in Bottom for Floor Drain Access

MATERIAL OPTIONS

- ☐ All 14 Gauge Brushed Finish Stainless
- ☐ Type 316 Stainless

SINK FAUCET OPTIONS

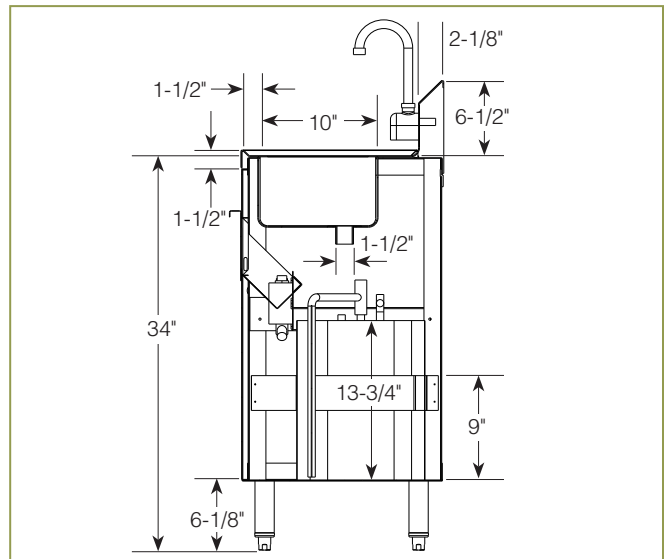
- ☐ Single Deck Dual Control Faucet with 6" Swing Spout
- ☐ Infrared Faucet Battery (DC) Operated
- ☐ Transformer for Infrared Faucet (AC) Operated

OTHER OPTIONS

- ☐ All 14 Gauge Brushed Finish Stainless Curb Base
- ☐ 6" Stainless Legs

HSHW-ST

Hand Sink with Hot Water Heater, Soap and Towel Dispenser - Wall Mounted



This unit can be plumbed in the field to a floor drain if available or to a 1-1/2" drain pipe. 1/2" MPT for cold water connection only with less than 45 psi.

* Approval Drawings Required

Printed in the U.S.A. (June 2011) BSI, LLC
 Specifications subject to change without notice.

Revision 5.0

