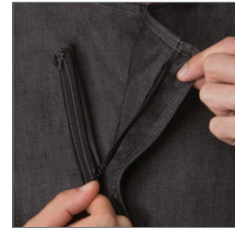


GRAMERCY CHEF COAT (WOMEN'S)

TWO-WAY SEPARATING ZIPPER • BACK COLLAR APRON HOLDER

NEW



two-way separating zipper



back collar apron holder



hidden earbud access



BLK (black)

Item: EXWDZ002
Sizes: XS-2XL

DESCRIPTION

Our Gramercy Chef Coat (Women's) is part of our Urban Collection; a street-inspired line of culinary apparel that provides the perfect combination of edgy fashion and forward-thinking functionality.

This coat is lightweight and decked out with features like dual sleeve pockets, hidden earbud access, and a two-way zipper. The new modern fit delivers a more tailored look and feel. Available in black only.

FEATURES

- 6.6 oz. 100% cotton denim fabric
- Single-breasted with two-way separating zipper
- Roll-up long sleeve with tab
- Back collar apron holder with engraved snap tab
- Contrast double-stitching throughout
- Left sleeve thermometer pocket
- Right sleeve cell phone/notebook pocket