

MODULAR BASE WITH KETTLE(S)

DIRECT STEAM

ONE or TWO, 6 GALLON KETTLE(S)

CABINET BASE: 18" (450MM), 24" (600MM) or 36" (900MM) WIDE

Cleveland Standard Features

- Factory assembled Kettle/Modular Base combination with one or two, 6 gallon kettle(s) for direct connection to steam from another source
- Steam Control Kit: includes needle type Steam Control Valve(s), Steam Trap, Condensate Strainer, Check Valve, nipples and fittings, factory assembled and mounted on kettle(s)
- Type 430 Stainless Steel exterior enclosure, kettle(s) and table top (with drain Trough which has 1.50" diameter male drain); #4 exterior finish
- 6 gallon kettle(s) are 2/3 Steam Jacketed and include Lift-Off Cover(s)
- Hot and Cold Water Faucet with Swing Spout
- Kettle(s) have 50 psi Steam Jacket Rating, 50 psi chrome plated Safety Valve(s) and Manual Tilting, balanced design
- Tilt Handles can be mounted on either side of kettle(s)
- Adjustable Flanged Feet (FF-A)

Options & Accessories

- ☐ Type 316 Stainless Steel Kettle interior(s) for high acid food products (316)
- ☐ Food Strainers (FS)
- ☐ Pressure Reducing Valve for incoming supply over 50 psi (PRV)
- ☐ Stainless Steel Base Frame (FSS)

MODELS: ☐ 18-DM-K6
☐ 24-DM-K6
☐ 36-DM-K66



Short Form Specifications

Shall be CLEVELAND, Direct Steam, Modular Cabinet Base with one or two, 6 gallon kettle(s), Model ____DM-K ____ Type 430 Stainless Steel exterior enclosure, Table Top and 4 Level adjustable Feet. 2/3 Steam Jacketed, type 304 Stainless Steel kettle(s) with 50 psi Steam Jacket Rating. Needle type Steam Control Valve on each kettle. To operate connect directly to a steam source supplying from 5 to 10 psi steam. Steam Condensate Trap and Strainer, factory assembled and installed. Includes Hot and Cold Water Faucet with Spring Spout and Lift-Off Kettle Cover(s).

WATER QUALITY REQUIREMENT

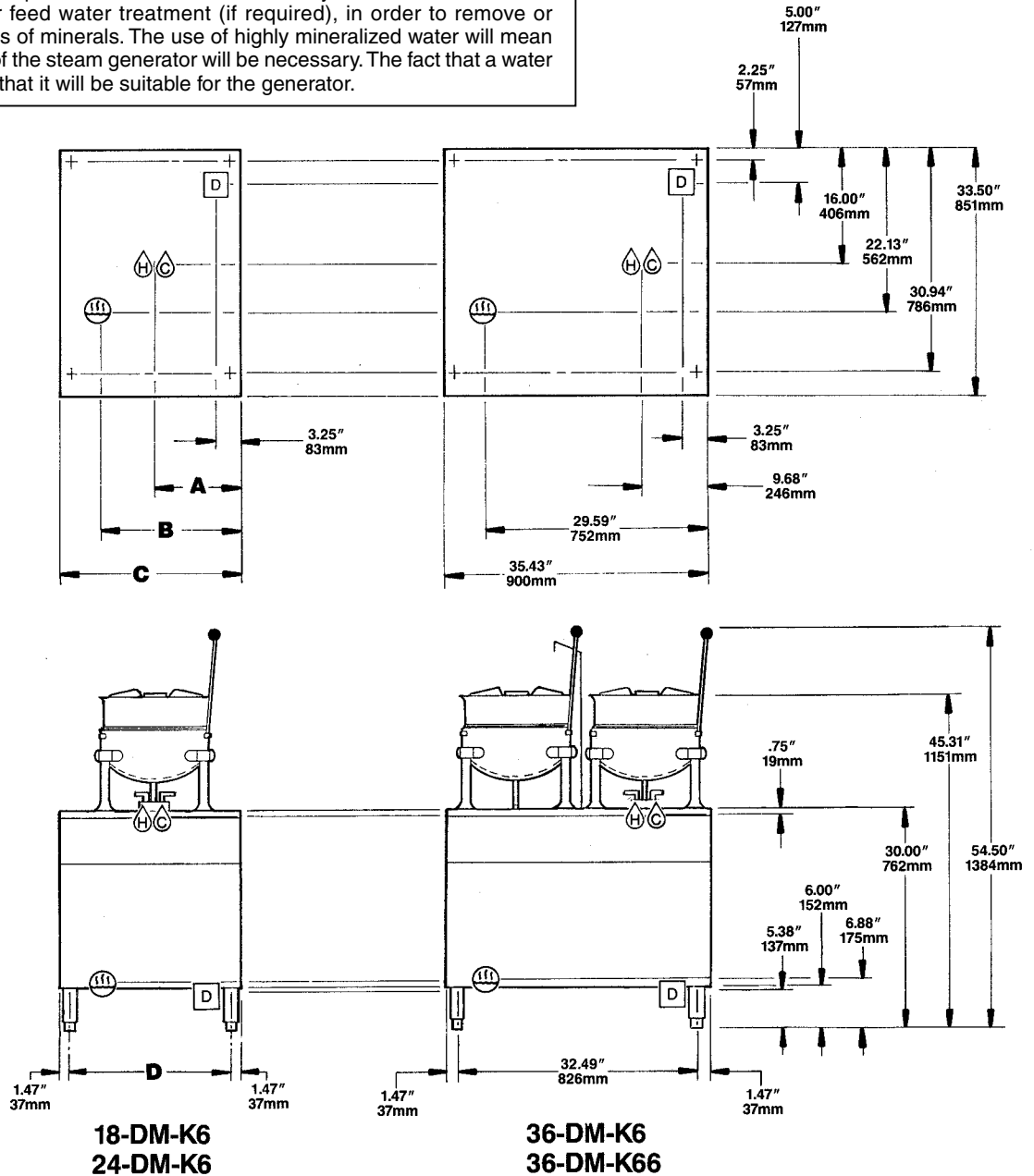
The recommended minimum water quality standards whether untreated or pre-treated, based upon 10 hours of use per day, and a Daily Blowdown, are as follows:

TOTAL DISSOLVED SOLIDS	less than 60 parts per million
TOTAL ALKALINITY	less than 20 parts per million
SILICA	less than 13 parts per million
pH FACTOR	greater than 7.5
CHLORINE	less than 30 parts per million

Consult a local water treatment specialist for an on site water analysis for recommendations concerning steam generator feed water treatment (if required), in order to remove or reduce harmful concentrations of minerals. The use of highly mineralized water will mean that more frequent servicing of the steam generator will be necessary. The fact that a water supply is potable is not proof that it will be suitable for the generator.

CAPACITIES

(in 4 oz. servings)
(Other sizes may be calculated.)
6 gallon / 23 liters 160 per kettle



DIRECT STEAM	WATER	DRAINAGE	CLEARANCE
Steam Supply: • ½" IPS minimum line. • Operating Pressure 5 to 50 psi with 55 psi Safety Valve.	35 psi minimum 60 psi maximum ¼" NPT hot and cold water for kettles.	1 1/2" IPS common drain. Do not connect other units to this drain. Do not use PVC pipe for drain.	Right - 3", Left - 3", Rear - 3" (12" on control side if adjoining wall or equipment is over 30" high for service access) Contact factory for variances to clearances.

Model No.		A	B	C	D
18-DM-K66	IN mm	8.86 225	11.87 302	17.71 450	14.80 376
24-DM-K66	IN mm	11.81 300	17.78 452	23.62 600	20.69 525

NOTES:

Cleveland Range reserves right of design improvement or modification, as warranted.
Many regional, state and local codes exist and it is the responsibility of the owner and installer to comply with the codes.
Cleveland Range equipment is built to comply with applicable standards for manufacturers. Included among those approval agencies are UL, ULC, UL/NSF#4 and CSA.

(NOT TO SCALE)
SECT. VII PAGE 36
0609
Litho in U.S.A.