

## 2-3 OYSTER KETTLES

ELECTRIC STEAM GENERATOR 24KW  
 36" (900MM) or 42" (1050MM)  
 CABINET BASE

### Cleveland Standard Features

- 24 KW Electric Steam Generator base with full width Drain Trough, Grate and a 1 1/2" drain.
  - Easy-Access Swing-Type Hinged Doors.
  - Automatic Generator Fill at start-up.
  - Automatic Generator Drain upon shutdown.
  - 10 PSI operating pressure control.
  - Serviceable from the front.
- 80 oz. tilting Oyster Kettles with Lift-Off Covers.
  - 50 PSI Steam Jacket Rating for kettles.
  - Factory installed Steam Control Kit
  - Mirror Finish on kettles
- Cold Water Faucet with Swing Spout.
- Cabinet Base Console includes a Pressure Gauge, Two Rocker Type Power Switches: one, red color light for water fill to generator; one, amber color light for power supply to generator.
- Solid State Water Level Control that includes a Low Water Safety Shut-Off.
- Generator Drain Cycle includes water cooling "Jet Rinsing" drain cleaning feature.
- Steam Generator includes a large Access Cover and Sight Glass Gauge as required by ASME codes.
- Secondary Low Water Cut-Off, factory installed (CAL-E) Required for AZ, CA, CO, CT, FL, GA, IL, IA, MA, MN, NE, NV, RI, SD, TN, WA, Houston, TX.)
- NSF Approved 6" Stainless Steel Adjustable Legs: provides one inch level adjustment.
- Available in most voltages – 1 or 3 phase.

### Applications

- Quick, single-serving items for display cooking.
  - Pasta with sauces and other ingredients.
  - Classic Asian stir-fry.
  - Noodles featuring Asian, American or Italian styles.
  - Seafood items featuring oysters, shrimp and scampies.
  - Omelets and scrambled eggs.
  - Vegetable sautés.

**MODELS:**  36-EM-K11-24  
 42-EM-K111-24



### Short Form Specifications

Shall be CLEVELAND, Oyster Bar, Model \_\_\_\_ - EM-K \_\_\_\_ - 24; \_\_\_\_ volts, \_\_\_\_ Hz, \_\_\_\_ phase, \_\_\_\_ KW, steam generator base with drain trough, splashguard and cold water faucet(s). To include, factory mounted, 80 oz. tilting oyster kettles with steam control kit and lift-off covers. Electric steam generator with solid state water level controls, pressure limit controls, sight glass and 15 psi safety valve. Automatic steam generator (boiler) blow-down and refill on start-up.

### Options & Accessories

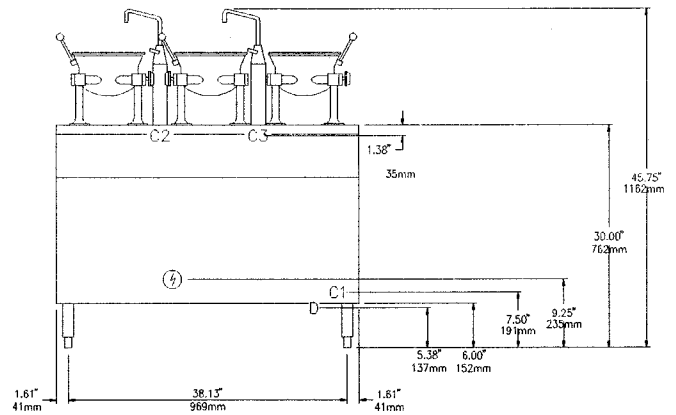
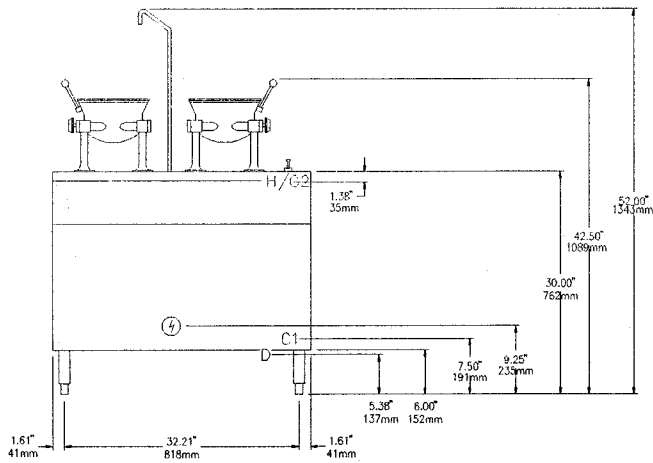
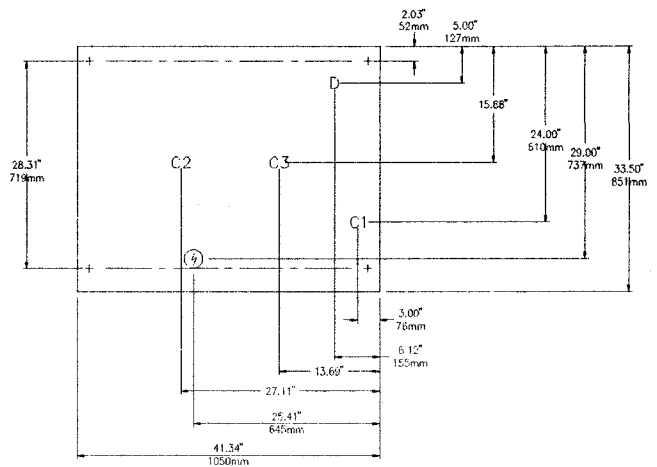
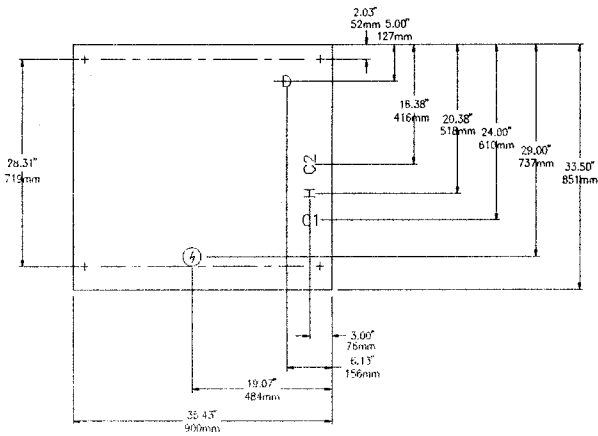
- Voltages other than standard.
  - 115 – 480/60/3 (VOS-2)
  - 220 – 380/50/3 (VOS-3)
  - 240 – 415/50/3 (VOS-4)
  - 500 – 600/60/3 (VOS-5)
- 36 or 48 KW Generator Power Options.
- Type 316 Stainless Steel Liner, 6 gallon kettle (each, 316G).
- Stainless Steel Frame (FSS).
- Mineral Purge Cycle (MPC).

## WATER QUALITY REQUIREMENT

The recommended minimum water quality standards whether untreated or pre-treated, based upon 10 hours of use per day, and a Daily Blowdown, are as follows:

TOTAL DISSOLVED SOLIDS	less than 60 parts per million
TOTAL ALKALINITY	less than 20 parts per million
SILICA	less than 13 parts per million
pH FACTOR	greater than 7.5
CHLORINE	less than 30 parts per million

Consult a local water treatment specialist for an on site water analysis for recommendations concerning steam generator feed water treatment (if required), in order to remove or reduce harmful concentrations of minerals. The use of highly mineralized water will mean that more frequent servicing of the steam generator will be necessary. The fact that a water supply is potable is not proof that it will be suitable for the generator.



ELECTRIC ⚡				WATER H <sub>2</sub> O				DRAINAGE □		CLEARANCE	
KW			280V	220V	240V	480V					
24	3 PHASE	AMPS PER LINE	57	63	52	26	1½" IPS common drain The Floor Drain must be located outside the confines of the equipment base. Do not connect any other units to this drain.		RIGHT = 4.00" LEFT = 0.00" REAR = 0.00" Allow 6.00" minimum from rear and sides when located near combustible walls.		
	1 PHASE		99	N/A	89	45					
36	3 PHASE	100	80	87	44						
48	3 PHASE	119	127	107	53						
							35 psi minimum 60 psi maximum				

**NOTES:**

Cleveland Range reserves right of design improvement or modification, as warranted.  
 Many regional, state and local codes exist and it is the responsibility of the owner and installer to comply with the codes.  
 Cleveland Range equipment is built to comply with applicable standards for manufacturers. Included among those approval agencies are ASME/N. Bd, UL, CSA and NSF.