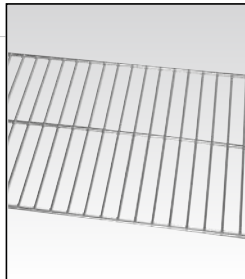




Accessories for Table Type & Floor Models

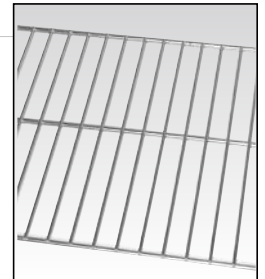
12" x 20" Wire Racks

Model #	Description
CWR-10	for models 6.10 & 10.10



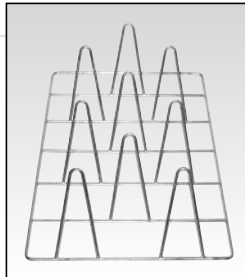
20" x 26" Wire Racks

Model #	Description
CWR-20	for models 6.20, 10.20, 12.20 & 20.20



Chicken Grill Rack

Model #	Description
CCGR10	for models 6.10 & 10.10
CCGR20	for models 6.20, 10.20, 12.20 & 20.20



12" x 20" Frying Wire Basket

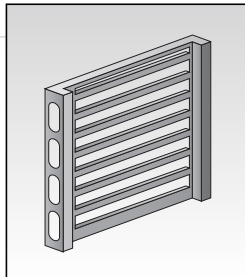
Model #	Description
CWB10	12" x 20" for all models
CWB20	20" x 26" (full size) for models 6.20, 10.20, 12.20 & 20.20



Pan Rack Adapters (for Table Type Models)

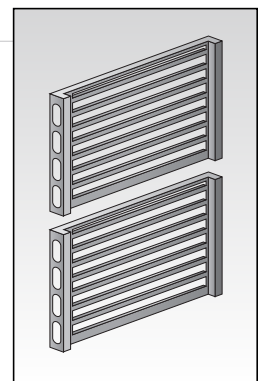
Model #	Description
CUPR-620	for model 6.20
CUPR-1020	for model 10.20

(not available for models 6.10 & 10.10)



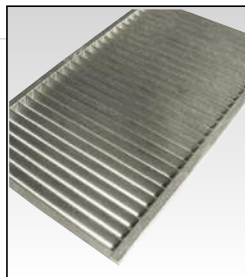
Pan Rack Adapters (for Floor Models)

Model #	Description
CUPR-1220	for model 12.20
CUPR-2020	for model 20.20



ConvoGrill Grilling Rack Accessory

Model #	Description
CGR10	13" x 18" Combi Grilling Rack





Accessories for Table Type & Floor Models

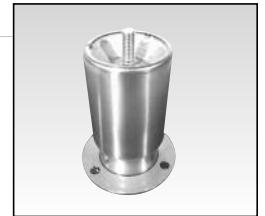
Lockable Control Cover

Model #	Description
CPRT-610	for model 6.10
CPRT-1010	for model 10.10
CPRT-620	for model 6.20
CPRT-1020	for model 10.20
CPRT-1220	for model 12.20
CPRT-2020	for model 20.20



Flanged Feet (for Table Type Models)

Model #	Description
CST-4FF	for securing unit to stand or table



Service Start up Check

Model #	Description
ASA StartUp	inspect installation, review cleaning and maintenance instructions, start warranty protection



Pre-Heat Bridge (for Floor Models)

Model #	Description
CPHB-20	for models 12.20 & 20.20



Extended Labor Warranty

Model #	Description
C-ELW	for all models

Electrical Options

Model #	Description
C-VOS2A	for table type models - 440/480 volts, 60 cycle, 3 phase
C-VOS3A	for floor models - 440/480 volts, 60 cycle, 3 phase