



IN-WALL CARRIER

FOR USE WITH WALL MOUNTED,
DIRECT STEAM, PRESSURE STEAMERS

MODEL: IWC-PDW

Cleveland Standard Features

- Welded Steel Construction
- Furnished with 8 each 5/8"-11 NC studs for supporting steamer Carrier Channels. Does not include necessary Double Hex Nuts (16 each 5/8"-11 NC)
- Provided with eight, floor studs holes (11/16" Diameter) to receive pre-set floor studs (5/8" diameter)
- To be imbedded in floor and wall and covered with appropriate surfaces
- In-Wall Carrier is required for Wall-Mounted Units and should be included in specification for Steamer
- Completed installation provides unobstructed floor area for cleaning

ITEM NUMBER _____

JOB NAME / NUMBER _____

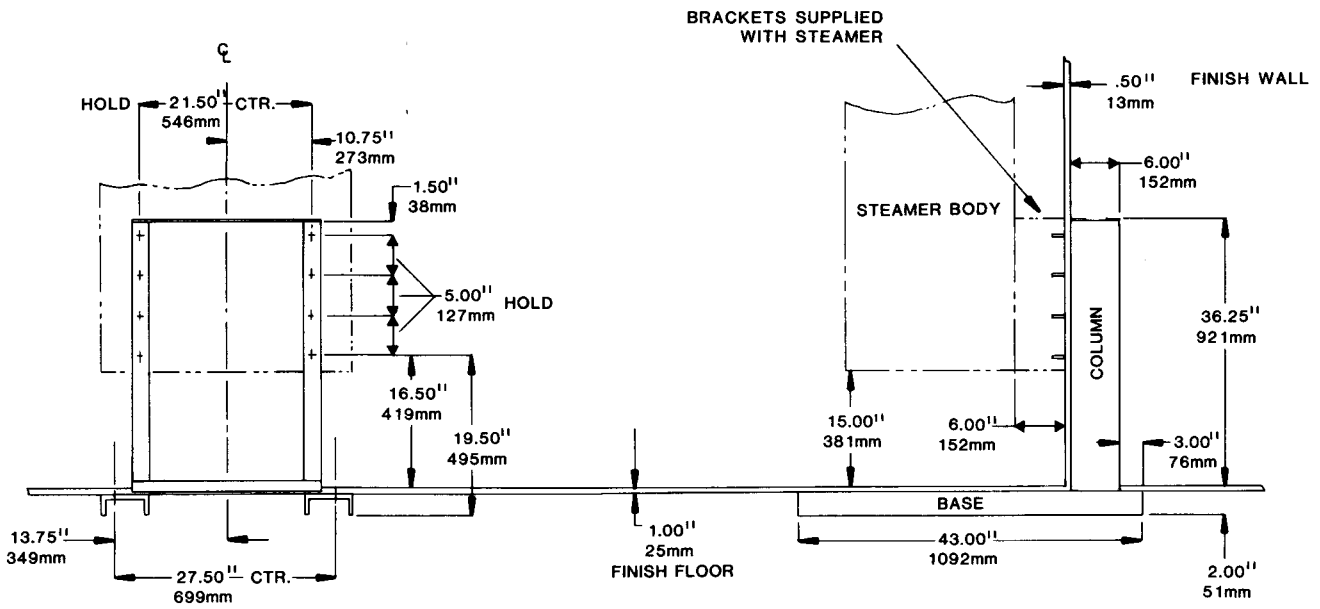
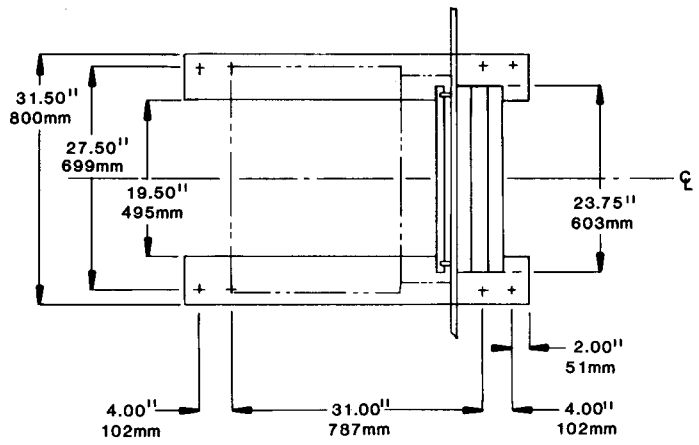
Options & Accessories

- Mounting Studs, in lengths other than standard



Short Form Specifications

Shall be CLEVELAND, Model IWC-PDW, In-Wall Carrier, Steel, for installing Cleveland Pressure Steamers. Includes (8) Supporting Studs 5/8" - 11 x 2 1/2" long .



NOTE: Contractor to supply eight, 5/8" Studs - Hold Downs for Carrier (as shown on plan view).
 16 nuts to be supplied by Contractor for 5/8"-11 NC thd. for steamer suspension.

NOTES:

Cleveland Range reserves right of design improvement or modification, as warranted.
 Many regional, state and local codes exist and it is the responsibility of the owner and installer to comply with the codes.
 Cleveland Range equipment is built to comply with applicable standards for manufacturers. Included among those approval agencies are U.L., NSF, CGA, CSA, ETL and others.