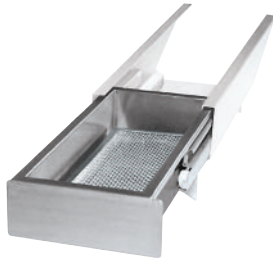


SLIDING DRAIN DRAWER OPTION

FOR OPEN BASE
R-SERIES SKILLETS



MODELS: SLD-TD
 SLD

Cleveland Standard Features

- Drain Drawer and 2" Tangent Draw-Off Valve mounted on left-hand side of unit.
- Modified Pan Hinge allows full tilting.
- Durable 12 gauge, 304 Stainless Steel construction.
- 1 1/4" NPT Drain Pipe Connection.
- Removable Stainless Steel Grate.
- Durable Nylon Rollers.

Cleveland Standard Features

- Drain Drawer and Pour Spout mounted on left-hand side of unit.
- Cover Handle mounted on right-hand side of unit.
- Durable 12 gauge, 304 Stainless Steel construction.
- 1 1/4" NPT Drain Pipe Connection.
- Removable Stainless Steel Grate.
- Durable Nylon Rollers.

MODEL SLD-TD*

- Complete with:
- Sliding Drain Drawer
 - 2" Tangent Draw-Off Valve

* Shown on model SGL-40-TR



MODEL SLD*

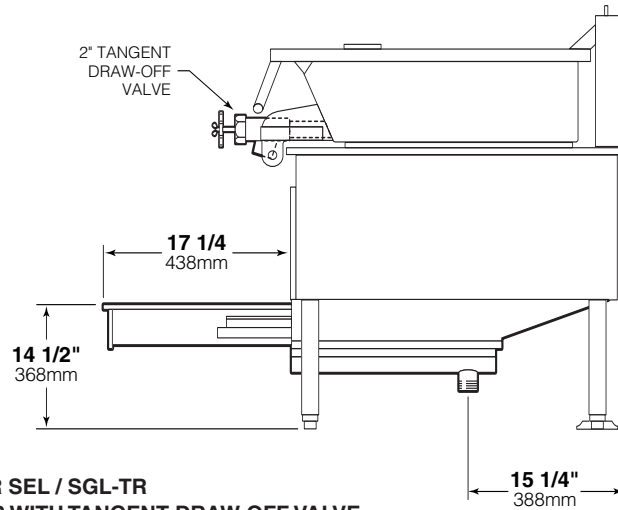
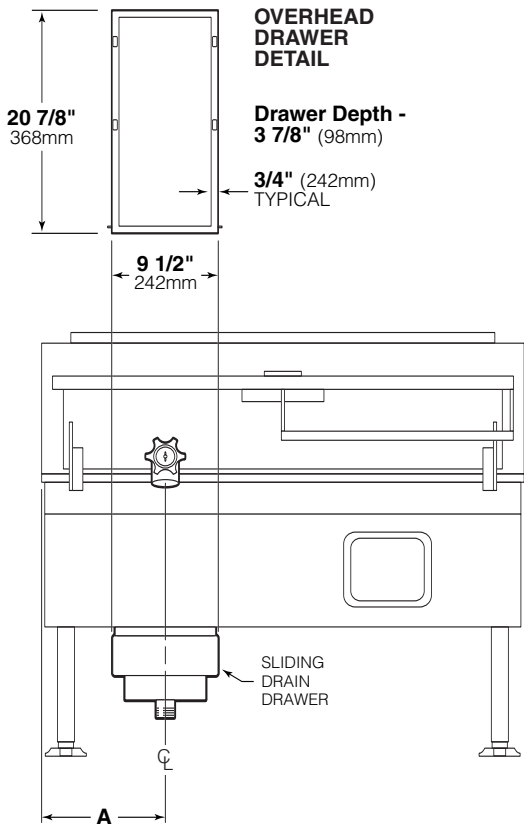
- Complete with:
- Sliding Drain Drawer

* Shown on model SGL-40-TR

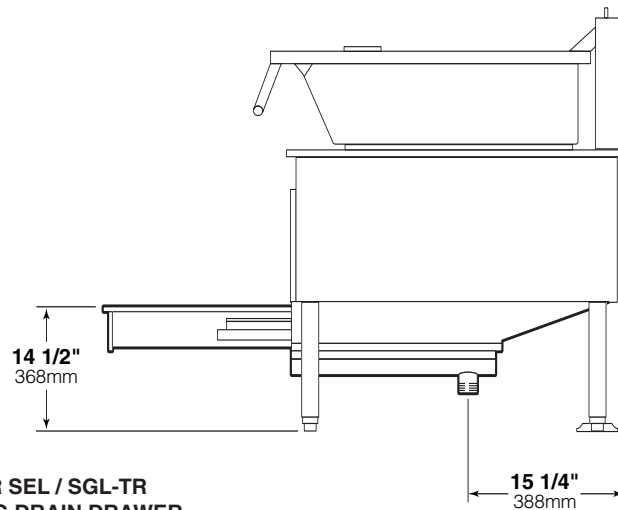
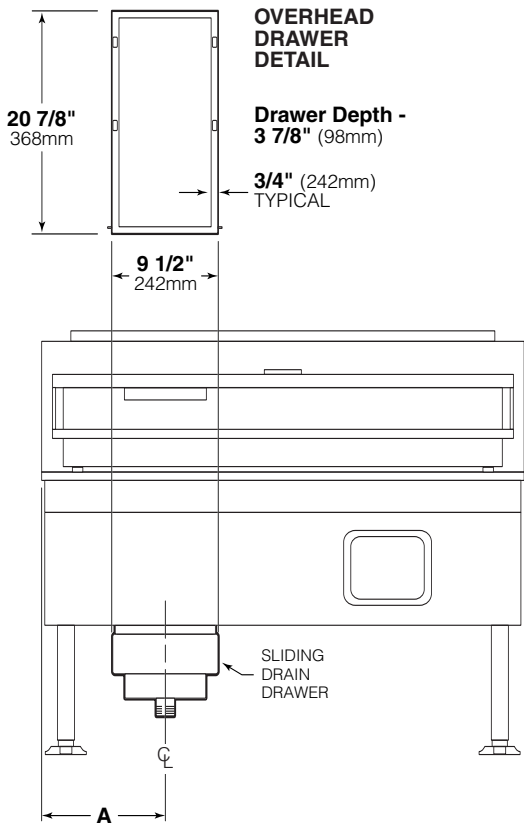


DIMENSIONS

CAPACITY	A
30 GAL.	9 3/16"
	(234mm)
40 GAL.	12 3/32"
	(307mm)



**FOR SEL / SGL-TR
SLIDING DRAIN DRAWER WITH TANGENT DRAW-OFF VALVE**



**FOR SEL / SGL-TR
SLIDING DRAIN DRAWER**

NOTES:

Cleveland Range reserves right of design improvement or modification, as warranted.
 Many regional, state and local codes exist and it is the responsibility of the owner and installer to comply with the codes.
 Cleveland Range equipment is built to comply with applicable standards for manufacturers. Included among those approval agencies are U.L., NSF, CGA, CSA, ETL and others.

(NOT TO SCALE)