

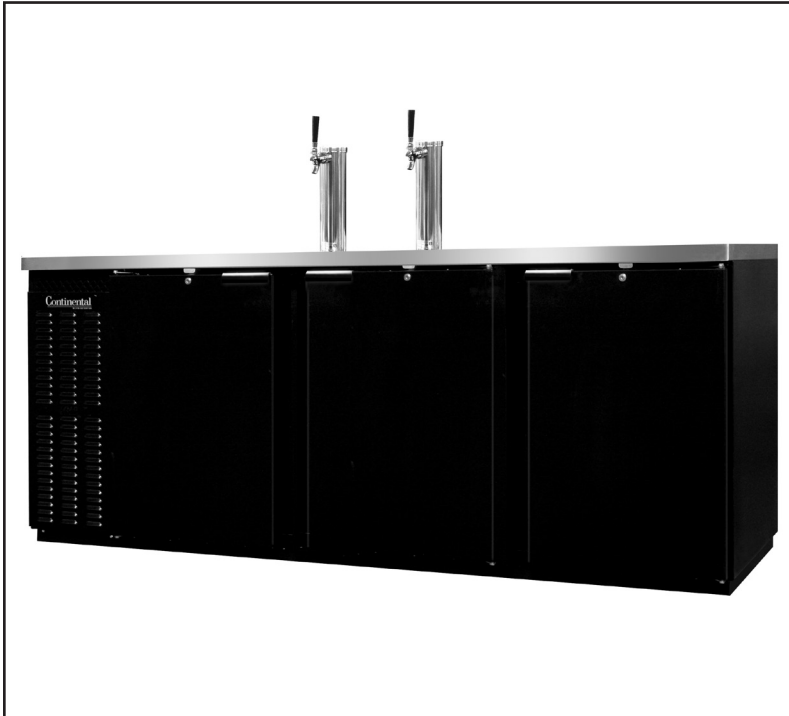
BACK BAR EQUIPMENT

Model: KC90

90" Keg Cooler

Textured baked enamel finish (black) exterior with all stainless steel countertop, heavy-duty galvanized interior with reinforced stainless steel floor.

Designed to maintain NSF-7 temperatures in 100°F ambient.



Options and Accessories

(upcharge and lead times may apply)

Stainless steel exterior (-SS models)	Wine rack
Stainless steel interior	Single, dual or triple faucets
Glass doors in lieu of solid doors	Faucet lock
Epoxy-coated shelves with clips	Remote models
Stainless steel shelves with clips	Expansion valve system
Automatic, electric condensate evaporator	Casters or legs
Condensing unit on right	Shallow depth

Project Name:

Model Specified:

Location:

Item No:

Quantity:

AIA #:

SIS #:

Standard Model Features

REFRIGERATION SYSTEM

- Performance-rated **front breathing** refrigeration system
- Environmentally-safe R-134a refrigerant
- Full length, extra large coil
- Automatic, energy-saving, non-electric condensate evaporator

CABINET ARCHITECTURE

- High density, non-CFC polyurethane foamed-in-place insulation
- Continuously cooled, 3" diameter beer columns with lever faucet, CO₂ pressure relief distributor and CO₂ tubing with clamps
- Easily removable stainless steel drip grate with convenient front-mounted cleanout drainage hose
- Magnetic snap-in gasket (each door)
- Cylinder-keyed security lock (each door)
- Stainless steel reinforced threshold

MODEL FEATURES

- Easily accessible and serviceable slide-out condensing unit
- Removable front, rear and side venting louvered panels
- Interior light

Continental
Refrigerator

Toll-Free: 800-523-7138
Phone: 215-244-1400
Fax: 215-244-9579

539 Dunksferry Road
Bensalem, PA 19020
www.continentalrefrigerator.com

APPROVAL:

Model Specifications

DIMENSIONAL DATA

Net Capacity (cu. ft.)	35 (991 cu l)
Width, Overall (in.)	90 (2286 mm)
Depth, Overall (in.) (incl. handles & bumpers)	29 1/4 (743 mm)
Depth, Body Only (in.) (less doors)	25 (635 mm)
Height, Overall (in.) (not incl. columns)	36 3/4 (933 mm)
Barrel Capacity (# barrel type kegs)	4
Straight Wall Capacity (# straight wall kegs)	5
No. of Doors	3
No. of Beer Columns	2

REFRIGERANT DATA

Condensing Unit Size (H.P.)	1/2
Capacity (BTU/Hr)*	2670

ELECTRICAL DATA

Voltage (int'l)	115/60/1 (220/50/1)
Feed Wires (incl. ground)	3
Total Amps (int'l)	13.0 (5.3)
10 ft. Cord/Plug [attached] (int'l)	Yes (No)

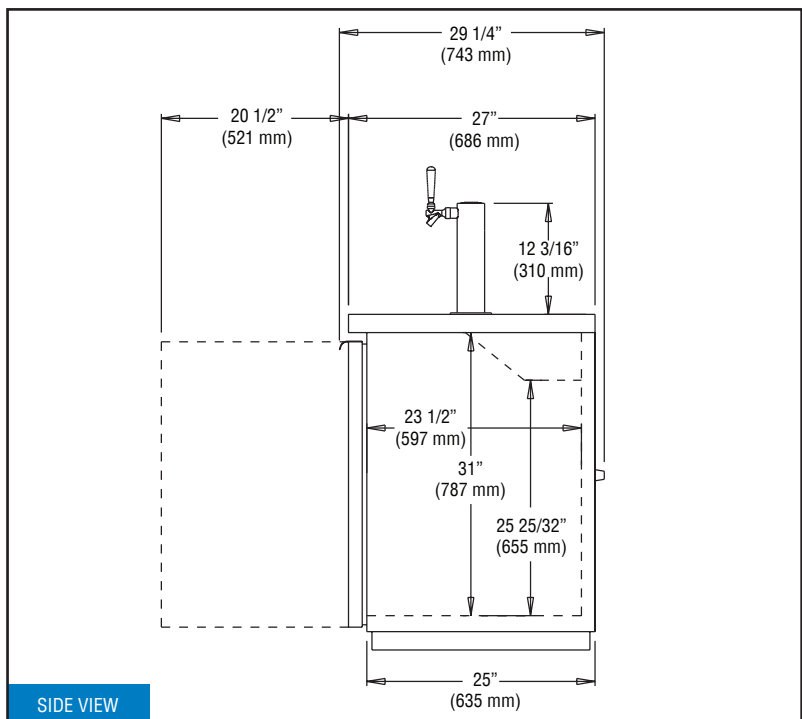
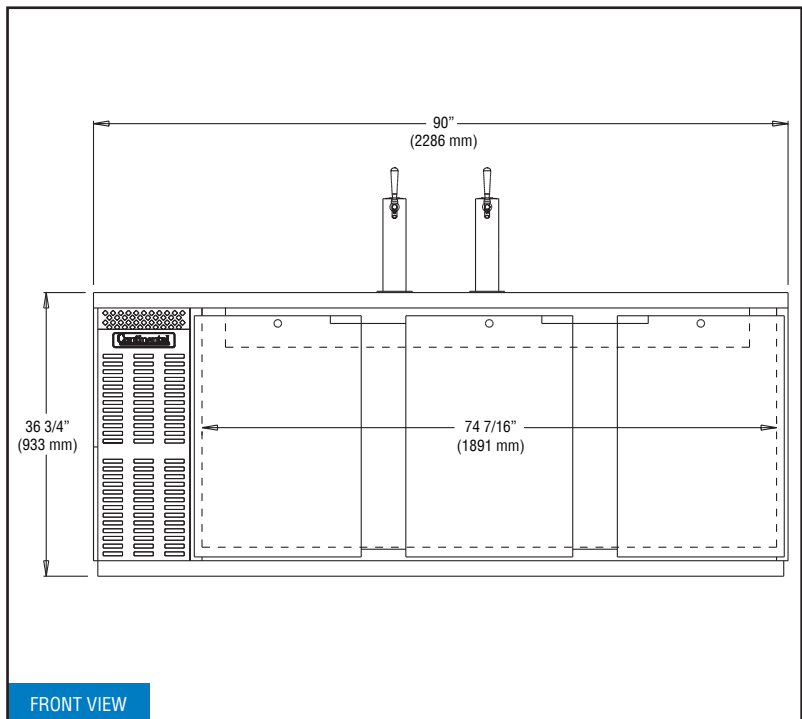
SHIPPING DATA

Weight (lbs.)	505 (229 kg)
Height - Crated (in.)	46 (1168 mm)
Width - Crated (in.)	109 (2769 mm)
Depth - Crated (in.)	42 (1067 mm)

* Rating @ +25°F evaporator, 90°F ambient

Figures in parentheses reflect metric equivalents rounded to the nearest whole unit.

Model Plan Views



Continental
Refrigerator

Toll-Free: 800-523-7138
Phone: 215-244-1400
Fax: 215-244-9579

539 Dunkserry Road
Bensalem, PA 19020
www.continentalrefrigerator.com

Due to our continued efforts in developing innovative products, specifications subject to change without notice.



MADE IN THE U.S.A.

© Copyright 2015. Continental Refrigerator.
A Division of National Refrigeration & Air Conditioning Products, Inc.