

SANDWICH UNIT REFRIGERATOR

Model: **SW48-12-D**

48" Standard Top Sandwich Unit Refrigerator with Drawers - 12 Pans

Stainless steel front and top, aluminum end panels, case back and interior.
Certified under NSF-7 to maintain temperatures in 86°F ambient and designed to maintain NSF-7 temperatures in 100°F ambient.



Options and Accessories

(upcharge and lead times may apply)

| | |
|---|----------------------------|
| Stainless steel exterior and interior - SS models | Rear-mounted cutting board |
| Stainless steel end panels - SA models | Flat insulated night cover |
| Glass doors in lieu of drawers - GD models | Remote models |
| Stainless steel finished back in lieu of aluminum | Drawer locks |
| Solid doors in lieu of drawers | Adjustable legs |
| Overshelves (single or double) | Digital thermometer |
| Automatic, electric condensate evaporator | Crumb catcher |
| Expansion valve system | Three tier drawers |

Consult factory for other model configurations, options and accessories.

Continental
Refrigerator

Toll-Free: 800-523-7138
Phone: 215-244-1400
Fax: 215-244-9579

539 Dunksferry Road
Bensalem, PA 19020
www.continentalrefrigerator.com

Project Name:

Model Specified:

Location:

Item No:

Quantity:

AIA #:

SIS #:

Standard Model Features

REFRIGERATION SYSTEM

Performance-rated refrigeration system
Environmentally-safe R-134a refrigerant
Unique air flow distribution allows pan product to maintain 33° - 41°F
Automatic, energy saving, non-electric condensate evaporator
Non-corrosive, plasticized fin evaporator coil
Easily serviceable, back mounted compressor

CABINET ARCHITECTURE

2" non-CFC polyurethane foam insulation
Magnetic snap-in drawer gaskets
12" deep, full length nylon cutting board
Stainless steel roll-out drawers
Insulated lid
5" casters
Completely enclosed, vented and removable case back

MODEL FEATURES

(12) 1/6 size non-recessed pans, 4" deep
Interior hanging thermometer

APPROVAL:

Model Specifications

DIMENSIONAL DATA

| | |
|---|------------------|
| Net Capacity (cu. ft.) | 13.4 (379 cu l) |
| 1/6 Size Pans (4" deep) | 12 |
| Width, Overall (in.) | 48 (1219 mm) |
| Depth, Overall (in.) (incl. handles & bumpers) | 31 7/16 (799 mm) |
| Depth, Body Only (less drawers) (in.) | 27 1/2 (699 mm) |
| Depth, Cutting Board (in.) | 12 (305 mm) |
| Height, Overall (in.) (incl. 5" casters) | 42 1/4 (1073 mm) |
| No. of Drawers (two tier) | 4 |
| No. of Drawers (three tier) | 6 |

REFRIGERANT DATA

| | |
|-----------------------------|------|
| Condensing Unit Size (H.P.) | 1/5 |
| Capacity (BTU/Hr)* | 1620 |

ELECTRICAL DATA

| | |
|-------------------------------------|---------------------|
| Voltage (int'l) | 115/60/1 (220/50/1) |
| Fans | 3 |
| Total Amps (int'l) | 7.3 (3.6) |
| 10 ft. Cord/Plug [attached] (int'l) | Yes (No) |

SHIPPING DATA

| | |
|-----------------------|------------------|
| Weight (lbs.) | 270 (122 kg) |
| Height - Crated (in.) | 43 1/4 (1099 mm) |
| Width - Crated (in.) | 64 (1626 mm) |
| Depth - Crated (in.) | 46 (1168 mm) |

DRAWER PAN CONFIGURATIONS

Two Tier: (1) 12 x 18 x 6 pan per drawer
or (1) 1/2 size x 6 & (1) 1/3 x 6 pans per drawer

Three Tier: (1) 12 x 18 x 3 1/2 pan per drawer
or (1) 1/2 size x 4 & (1) 1/3 x 4 pans per drawer

* Rating @ +25°F evaporator, 90°F ambient

Figures in parentheses reflect metric equivalents rounded to the nearest whole unit.



Equipped with one NEMA-5-15P Plug
(varies by country)

Continental
Refrigerator

Toll-Free: 800-523-7138
Phone: 215-244-1400
Fax: 215-244-9579

539 Dunksferry Road
Bensalem, PA 19020
www.continentalrefrigerator.com

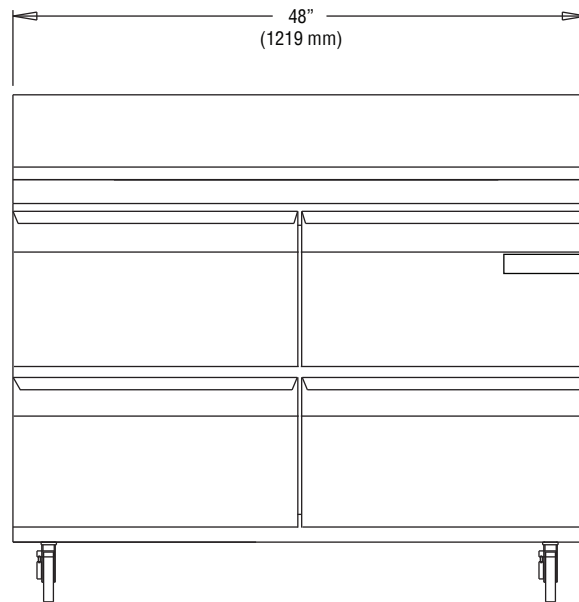
Due to our continued efforts in developing innovative
products, specifications subject to change without notice.



MADE IN THE U.S.A.

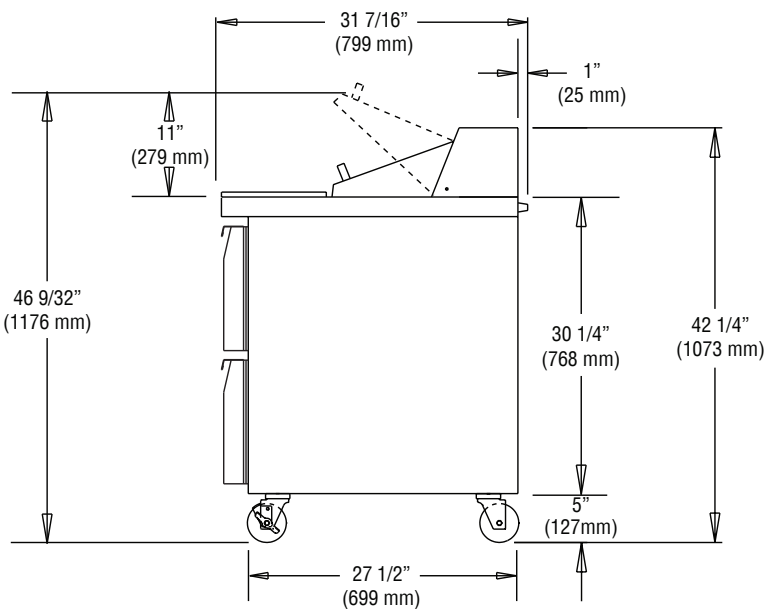
© Copyright 2013. Continental Refrigerator.
A Division of National Refrigeration & Air Conditioning Products, Inc.

Model Plan Views

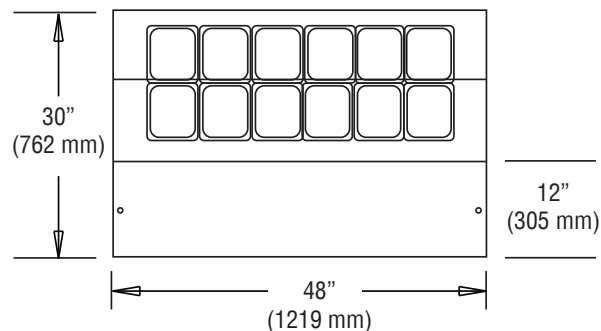


FRONT VIEW

Note: Shown with two tier drawers.



SIDE VIEW



PAN TOP CONFIGURATION