

# SANDWICH UNIT REFRIGERATOR

**Model: SW48-12M**

## 48" Mighty Top Sandwich Unit Refrigerator with Solid Doors - 12 Pans

Stainless steel front and top, aluminum end panels, case back and interior.  
**Certified under NSF-7 to maintain temperatures in 86°F ambient and designed to maintain NSF-7 temperatures in 100°F ambient.**



### Options and Accessories

(upcharge and lead times may apply)

|   |                            |
|---|----------------------------|
| Stainless steel exterior and interior - SS models | Expansion valve system     |
| Stainless steel end panels - SA models            | Rear-mounted cutting board |
| Glass doors in lieu of solid doors - GD models    | Flat insulated night cover |
| Stainless steel finished back in lieu of aluminum | Remote models              |
| Drawers in lieu of doors                          | Door locks                 |
| Overshelves (single or double)                    | Adjustable legs            |
| Stainless steel shelves                           | Digital thermometer        |
| Additional epoxy-coated steel shelves             | Crumb catcher              |
| Automatic, electric condensate evaporator         |                            |

Consult factory for other model configurations, options and accessories.

**Continental**  
Refrigerator

Toll-Free: 800-523-7138  
Phone: 215-244-1400  
Fax: 215-244-9579

539 Dunksferry Road  
Bensalem, PA 19020  
[www.continentalrefrigerator.com](http://www.continentalrefrigerator.com)

Project Name:

Model Specified:

Location:

Item No:

Quantity:

AIA #:

SIS #:

### Standard Model Features

#### REFRIGERATION SYSTEM

Performance-rated refrigeration system  
Environmentally-safe R-134a refrigerant  
Unique air flow distribution allows pan product to maintain 33° - 41°F  
Automatic, energy saving, non-electric condensate evaporator  
Non-corrosive, plasticized fin evaporator coil  
Easily serviceable, back mounted compressor

#### CABINET ARCHITECTURE

2" non-CFC polyurethane foam insulation  
Spring loaded, self closing doors  
Magnetic snap-in door gaskets  
Heavy-duty, epoxy-coated steel shelves  
10" deep, full length nylon cutting board  
Insulated lid  
5" casters  
Completely enclosed, vented and removable case back

#### MODEL FEATURES

(12) 1/6 size non-recessed pans, 4" deep  
Interior hanging thermometer  
Field rehingeable doors

APPROVAL:

## Model Specifications

### DIMENSIONAL DATA

|   |                  |
|---|------------------|
| Net Capacity (cu. ft.)                            | 13.4 (379 cu l)  |
| 1/6 Size Pans (4" deep)                           | 12               |
| Width, Overall (in.)                              | 48 (1219 mm)     |
| Depth, Overall (in.)<br>(incl. handles & bumpers) | 35 (889 mm)      |
| Depth, Body Only (less doors) (in.)               | 27 1/2 (699 mm)  |
| Depth, Cutting Board (in.)                        | 10 (254 mm)      |
| Height, Overall (in.)<br>(incl. 5" casters)       | 42 1/4 (1073 mm) |
| Shelf Area (sq. ft.)                              | 6.8 (.6 sq m)    |
| No. of Shelves                                    | 2                |
| No. of Doors                                      | 2                |
| Interior Depth (in.)                              | 19 3/8 (492 mm)  |
| Interior Height (in.)                             | 26 1/4 (667 mm)  |
| Interior Width (in.)                              | 44 (1118 mm)     |

### REFRIGERANT DATA

|                             |      |
|-----------------------------|------|
| Condensing Unit Size (H.P.) | 1/5  |
| Capacity (BTU/Hr)*          | 1620 |

### ELECTRICAL DATA

|                                     |                     |
|-------------------------------------|---------------------|
| Voltage (int'l)                     | 115/60/1 (220/50/1) |
| Fans                                | 3                   |
| Total Amps (int'l)                  | 7.3 (3.6)           |
| 10 ft. Cord/Plug [attached] (int'l) | Yes (No)            |

### SHIPPING DATA

|                       |                  |
|-----------------------|------------------|
| Weight (lbs.)         | 282 (128 kg)     |
| Height - Crated (in.) | 43 1/4 (1099 mm) |
| Width - Crated (in.)  | 64 (1626 mm)     |
| Depth - Crated (in.)  | 46 (1168 mm)     |

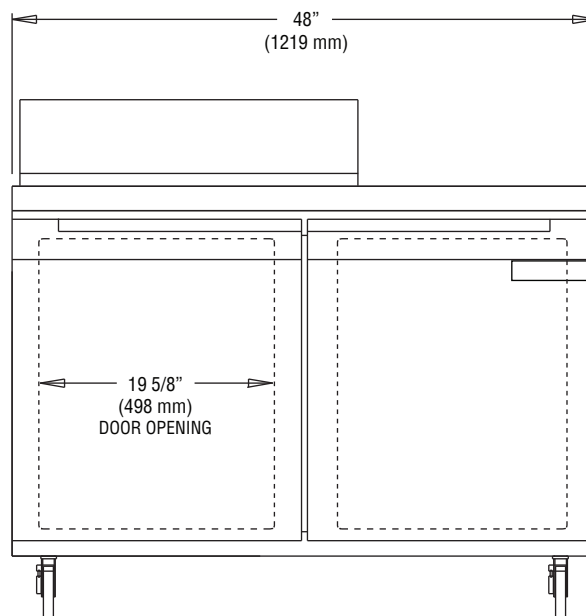
\* Rating @ +25°F evaporator, 90°F ambient

Figures in parentheses reflect metric equivalents rounded to the nearest whole unit.

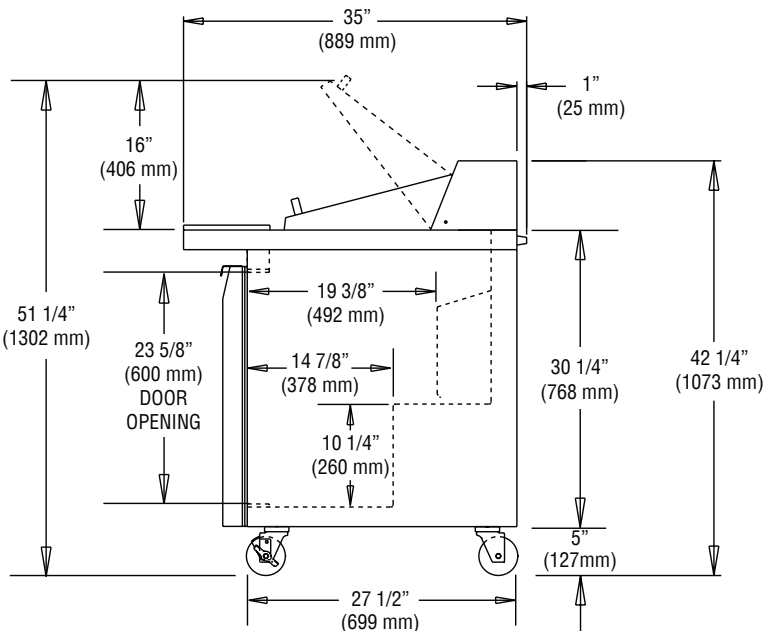


Equipped with one NEMA-5-15P Plug  
(varies by country)

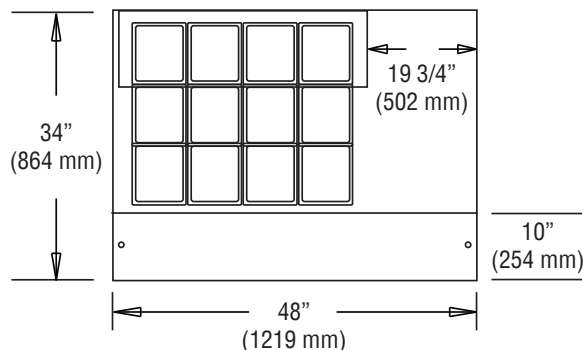
## Model Plan Views



FRONT VIEW



SIDE VIEW



PAN TOP CONFIGURATION

**Continental**  
Refrigerator

Toll-Free: 800-523-7138  
Phone: 215-244-1400  
Fax: 215-244-9579

539 Dunkserry Road  
Bensalem, PA 19020  
[www.continentalrefrigerator.com](http://www.continentalrefrigerator.com)

Due to our continued efforts in developing innovative products, specifications subject to change without notice.



MADE IN THE U.S.A.

© Copyright 2014. Continental Refrigerator.  
A Division of National Refrigeration & Air Conditioning Products, Inc.

SW48-12M (7/21/14)