



**MODEL E ENERGY SAVER**  
LOW WATER  
MACHINES

**USES ONLY  
.93  
Gallons Of Water  
Per Cycle!**



**MODEL E  
AVAILABLE IN STRAIGHT  
AND CORNER MODEL**



**MODEL E-3  
(3 DOORS OPEN)  
AVAILABLE FOR STRAIGHT  
THROUGH AND CORNER  
OPERATION.**



**MODEL E EXT  
WITH 20-1/2" DOOR OPENING  
AVAILABLE IN STRAIGHT  
AND CORNER MODEL**

**FEATURES AND FACTS:**

- **Energy Star Qualified.**
- 40 racks / 160 covers per hour.
- Economical to operate. **Uses only .93 gallons of water per cycle.**
- All stainless steel construction assures long life and years of trouble free operation.
- Unique spray arm system features upper and lower stainless steel wash arms with reinforced end caps.
- Top mounted controls include built-in chemical pumps and deliming system for dealing with scale.
- Auto start/stop makes operation safe and easy.
- New integrated scrap tray prevents food soil from entering drain system.
- Airgap fill system.

**CONVERTIBLE CORNER TO STRAIGHT AND STRAIGHT TO CORNER.**

**Available Options**

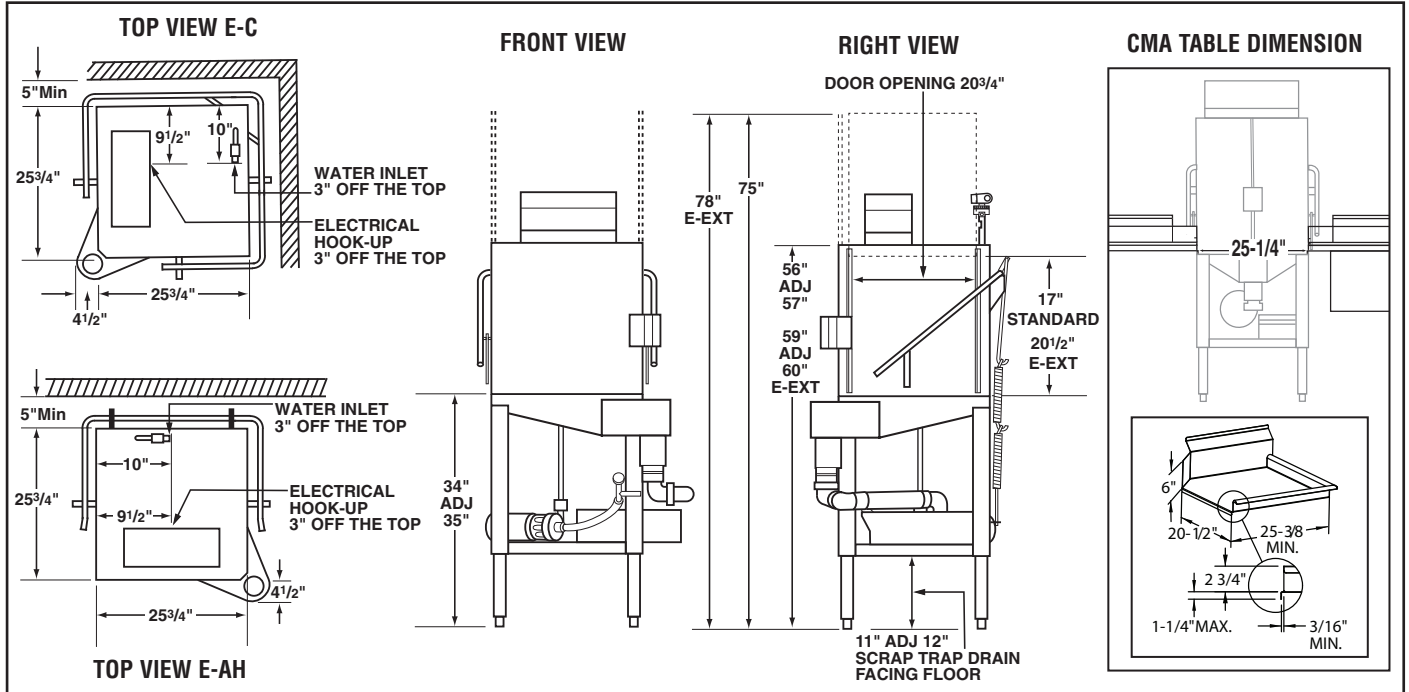
- Sanitizer Alarm
- Alternative cycle times
- Pull Pins
- Stainless Steel Scrap Trap Up Grade
- CMA Temp-Sure (Self Contained 12 kW Heater)
- 3 Doors open
- Extended (Tall) version





**MODEL E ENERGY SAVER**  
**LOW WATER**  
**MACHINES**

**WARNING:** Plumbing connections must be made by a qualified service company who will comply with all available Federal, State, and Local Health, Plumbing and Safety codes.



**Specifications:**

	MODEL E/E-3/E-EXT	USA	METRIC		USA	METRIC
<b>OPERATING CAPACITY</b>				<b>WASH PUMP MOTORS HP</b>	1	1
RACKS PER HOUR (NSF RATED)	40	40	40	<b>DIMENSIONS</b>		
<b>OPERATING CYCLE</b>				DEPTH	25-3/4"	(65.4cm)
WASH TIME-SEC	45	45	45	WIDTH	25-3/4"	(65.4cm)
RINSE TIME-SEC	30	30	30	HEIGHT	56"-57"	(142.2cm-144.8cm)
DWELL TIME-SEC	15	15	15		E-EXT 59"-60"	(150cm-152cm)
TOTAL CYCLE TIME	90	90	90	STANDARD TABLE HEIGHT	34"	(86cm)
<b>PUMP CAPACITY</b>	52 GPM	(197 LPM)	(197 LPM)	MAXIMUM CLEARANCE FOR DISHES	17"	(43cm)
<b>OPERATING TEMPERATURE</b>					E-EXT 20-1/2"	(52cm)
REQUIRED	120°F	(49°C)	(49°C)	<b>STANDARD DISHRACK DIMENSIONS</b>	1	1
RECOMMENDED	140°F	(60°C)	(60°C)		19-3/4"X19-3/4"	(50X50cm)
<b>WATER CONSUMPTION</b>				<b>ELECTRICAL RATING</b>	<b>VOLTS</b>	<b>AMPS</b>
PER RACK	.93 GAL.	(3.53 L)	(3.53 L)		115	16
PER HOUR	37 GPH	(139 LPH)	(139 LPH)	<b>SHIPPING WEIGHT APPROXIMATE</b>	218#	(98.7kg)
<b>WATER REQUIREMENTS</b>					E-EXT L 260#	(117.8kg)
WATER INLET	1/2"	(1.27cm)	(1.27cm)			
DRAIN-I.P.S.	2"	(5.1cm)	(5.1cm)			

**Summary Specifications: Model E/E-3/E-EXT**

CMA Energy Miser model E/E-3/E-EXT(Extended 20-1/2" door opening) low temperature, chemical sanitizing commercial dishwashers meet ETL, UL, and CUL sanitation and construction standards WITHOUT the use of BOOSTER or TANK HEATERS. The model E/E-3/E-EXT is constructed entirely of stainless steel. Each unit automatically washes, rinses and sanitizes utensils in standard 19-3/4"x19-3/4" racks. Units come with standard upper and lower stainless steel wash arms.

