



EST-44/66

High Temperature
Low Temperature
44"/66" Conveyor Dishwasher

OPTIONAL VENT HOODS

OPTIONAL E-TEMP BOOSTER HEATER WITH 40° & 70° RISE.

Water Consumption
Only .49 Gallons
Per Rack of Dishes



Available as Right or Left.
(must specify)

OPTIONAL VENT HOODS

OPTIONAL E-TEMP BOOSTER HEATER WITH 40° & 70° RISE.

Water Consumption
Only .49 Gallons
Per Rack of Dishes



Available as Right or Left.
(must specify)

FEATURES:

- **ENERGY STAR® Approved.**
- Automatic water control system.
- 249 racks / 996 covers per hour.
- Economical to operate. Uses only .49 gallons of water per rack of dishes.
- Single control switch activation.
- Power rinse heater system.
- Unique 3-stage (EST44) washing process provides wash, power rinse and final rinse all in a 44" machine.
- Unique 4-stage (EST66) washing process provides two wash stations, power heated rinse and final rinse all in a 66" machine.
- Automatic soil purging system filters wash water and traps plate debris into an external tray. Tray can be easily removed for cleaning.
- All stainless steel construction offers durable performance and years of trouble-free operation.
- Chemical resistant industrial heaters are proven to be more durable than commercial grade heaters.
- Large 19" opening accommodates larger items and utensils.
- Auto start/stop makes operation more energy efficient.
- Easy to remove and replace curtains for cleaning.
- Includes table limit switch and rack saver clutch system that protects the machine, dishracks and table from damage.
- Stainless steel chemical injection chamber.

Available Options

- Corner Feed Table (left or right must specify)
FACTORY INSTALLED ONLY
- Vent Hood with 4" x 16" Vent and Damper Control (2 per set)
- Stainless Steel dishtables
- Drain Water Tempering Kit
- "E Temp" CMA booster heater(40° and 70° rise)
FACTORY INSTALLED ONLY
- Hatco Booster Heater also available (specify voltage & phase)
- Scrap Trap Single Drain Connection Kit
- 208V-240V / 480V
- Sheet Pan Rack P/N: 1154.00
- 6" EXT height accommodates pots and pans and larger sheet pans
- Exhaust Fan Control
- **Note: E-Temp not available single phase 70° rise.**
- **Note: E-Temp standard voltage 208-230V three phase**

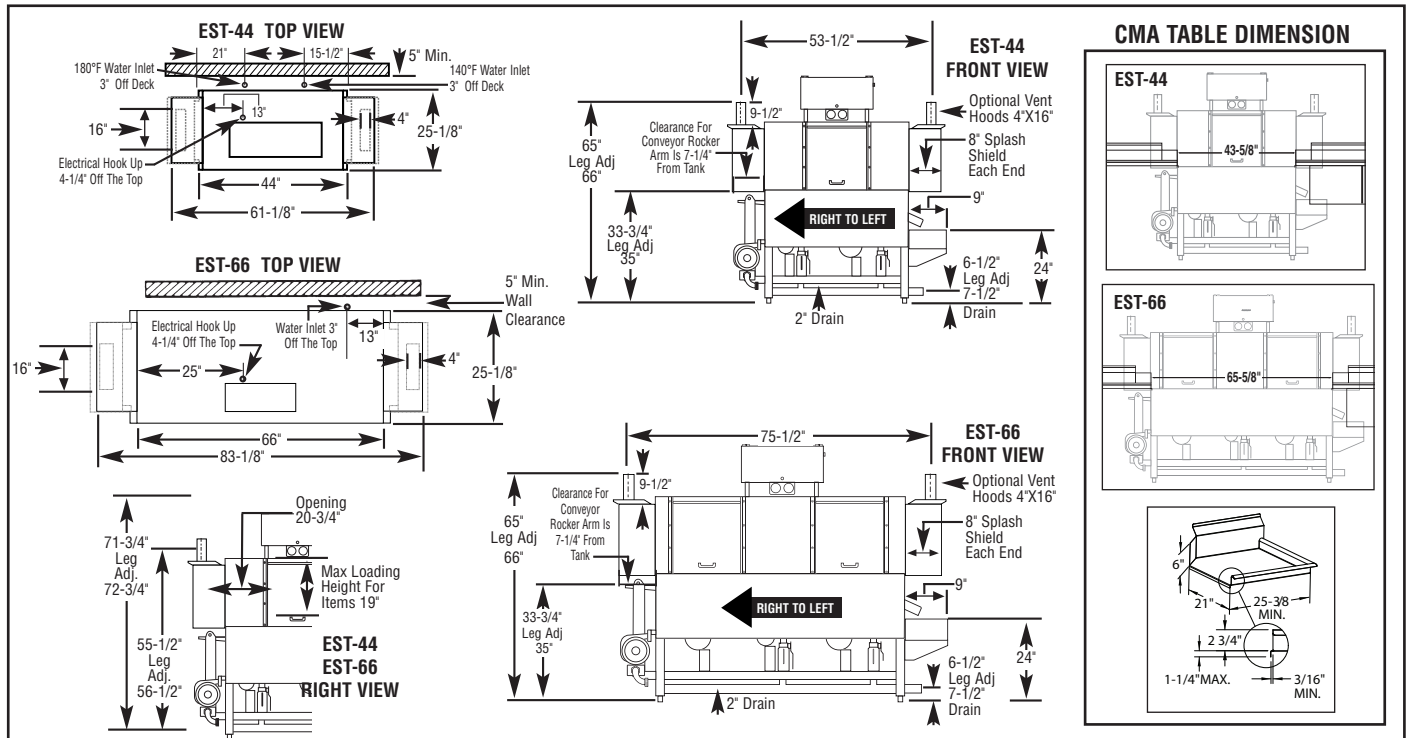




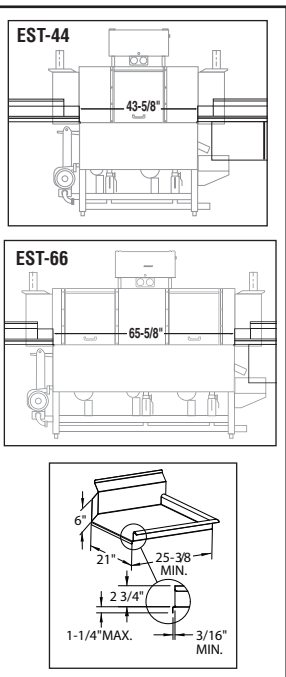
EST-44/66

High Temperature
Low Temperature
44"/66" Conveyor Dishwasher

WARNING: Plumbing connections must be made by a qualified service company who will comply with all (necessary) Federal, State, and Local Health, Plumbing and Safety codes.



CMA TABLE DIMENSION



Specifications:

MODEL EST-44/66 H/L	USA	METRIC	USA	METRIC
OPERATING CAPACITY RACKS PER HOUR (NSF RATED) 243	243	243	DIMENSIONS	
CONVEYOR SPEED	6.75 FT./MIN.	(206 CM/MIN.)	DEPTH EST-44/EST-66	25-1/8" (64cm)
WASH PUMP MOTORS HP	1	1	WIDTH EST-44	44" (111.7cm)
RINSE PUMP MOTOR HP	1/3	1/3	WIDTH EST-66	66" (167.64cm)
CONVEYOR MOTOR HP	1/8	1/8	HEIGHT EST-44 / EST66	55-1/2"-56-1/2" (140.97-143.51cm)
WATER INLET - FILL	1/2"	(1.27cm)	STANDARD TABLE HEIGHT EST-44/EST-66	34" (86cm)
WATER INLET - FINAL RINSE	1/2"	(1.27cm)	MAX LOADING HEIGHT FOR ITEMS EST-44/EST-66	19" (48cm)
DRAIN SIZE	2"	(5.1cm)	STANDARD DISHRACK DIMENSIONS	19-3/4"X19-3/4" (50X50cm)
FINAL RINSE PRESSURE	20 ± 5psi	(1.41 kg/cm ²)	ELECTRICAL RATING	VOLTS
WASH TANK CAPACITY EST-44				PHASE
PRE-RINSE	4.25 GAL (16.0 L)	(16.0 L)	208	1
WASH	11.75 GAL (44.5 L)	(44.5 L)	240	1
TOTAL	16.0 GAL (60.5 L)	(60.5 L)	208	3
WASH TANK CAPACITY EST-66			240	3
PRE-RINSE	5.25 GAL (20.0 L)	(20.0 L)	480	3
WASH	13.25 GAL (50.0 L)	(50.0 L)		
TOTAL	18.5 GAL (70.0 L)	(70.0 L)		
WASH PUMP CAPACITY	52 GPM (197 LPM)	(197 LPM)	WASH TANK HEATER	13.3kW @ 240V
OPERATING TEMPERATURE EST-44/66			RINSE TANK HEATER	3kW @ 240V
WASH	150°F-160°F (66°C/71°C)	(66°C/71°C)	SPECIFY DIRECTION OF RACK TRAVEL (RIGHT TO LEFT, LEFT TO RIGHT) WHEN ORDERING	
PUMPED RINSE	160°F (71°C)	(71°C)	EST-44H/EST-66 EXHAUST VENTILATION REQUIREMENTS AT 100% CAPACITY CFM	
FINAL RINSE	180°F-195°F (82°C/90°C)	(82°C/90°C)	ENTRANCE END 200 MAX	DISCHARGE END 400 MAX
OPERATING TEMPERATURE EST-44/66			TOTAL CFM 600 MAX	
WASH RECOMMENDED	140°F-150°F (60°C/68°C)	(60°C/68°C)	SHIPPING WEIGHT	
PUMPED RINSE RECOMMENDED	140°F-150°F (60°C/68°C)	(60°C/68°C)	APPROXIMATE EST-44	662# (300kg)
FINAL RINSE RECOMMENDED	140°F-150°F (60°C/68°C)	(60°C/68°C)	APPROXIMATE EST-66	750# (340kg)
WATER CONSUMPTION				
PER RACK (FINAL RINSE)	0.49 GAL (1.8 L)	(1.8 L)		
PER HOUR (FINAL RINSE)	119 GPH (450 LPH)	(450 LPH)		

Summary Specifications: Model EST-44 / EST-66 Conveyors

The Models EST-44H/ EST-66H high temperature and EST-44L / EST-66L Chemical Sanitizing conveyor dishwashers meets ETL sanitation, UL, and CUL construction standards. The EST-44 / EST-66 performs three separate washing functions including a built-in power rinse, all in a 44" or 66" space. The EST-44 / EST-66 washes up to 243 racks per hour and uses a minimum .49 gallons of water per rack while achieving sparkling, clean, dry dishes. Constructed entirely of stainless steel.

Call For Available Models (800-854-6417 or See web-Site:
www.cmadishmachines.com

