

PROJECT NAME: _____

LOCATION: _____

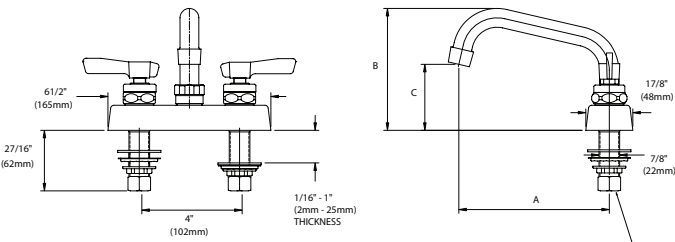
SPECIFIER ITEM NO. _____ **QTY:** _____

ENCORE PART NO. _____

Encore[®] Low Lead 4" (102mm) Deck Mount
 Faucet with Swing Spout, and Lever Handles

KL41-4xxx-SE1 Series

- KL41-4106-SE1 6" Spout, Ceramic Valves
- KL41-4006-SE1 6" Spout, Compression Valves
- KL41-4108-SE1 8" Spout, Ceramic Valves
- KL41-4008-SE1 8" Spout, Compression Valves
- KL41-4110-SE1 10" Spout, Ceramic Valves
- KL41-4010-SE1 10" Spout, Compression Valves
- KL41-4112-SE1 12" Spout, Ceramic Valves
- KL41-4012-SE1 12" Spout, Compression Valves



Dimensions shown in inches (mm) are for reference only and are subject to change.

1/2" NPS Male Inlets
 Operating Temperature: 40 - 180°F (5 - 83°C)
 Operating Pressure: 15 - 125psi
 Note: 1-1/8" (29mm) holes for deck are recommended to accommodate 1/2" supply nipples

Approximate shipping weight - 5 lbs
 Warranty - 2 years parts

Solid heavy duty low lead cast body is specification and commercial quality for hand sinks.

Commercial Quality Features

- Tubular swing spout design
- ADA-compliant lever handles
- Built-in check valves to prevent cross-flow and back-flow
- Leak proof double O-ring spout design
- Stainless steel spout

SANIGUARD[®] Product Protection

- Permanently incorporated on all touch points of Encore plumbing fixtures
- Inorganic, silver ion technology inhibits growth of common bacteria, yeasts, mold and fungi, minimizes cross-contamination

SPECIFICATIONS:

Low Lead Deck Mount Faucet to be Encore KL41 Series in the following configuration:

- _____ KL41-4006-SE1 6" Spout, Compression Valves
- _____ KL41-4106-SE1 6" Spout, Ceramic Valves
- _____ KL41-4008-SE1 8" Spout, Compression Valves
- _____ KL41-4108-SE1 8" Spout, Ceramic Valves
- _____ KL41-4010-SE1 10" Spout, Compression Valves
- _____ KL41-4110-SE1 10" Spout, Ceramic Valves
- _____ KL41-4012-SE1 12" Spout, Compression Valves
- _____ KL41-4112-SE1 12" Spout, Ceramic Valves

Faucet body to be constructed of polished chrome plated brass with total lead content less than 0.25% by weighted average. Handles to be lever and incorporated with SANIGUARD treatment. Supply inlets to be 4" on center. Valves to be 1/4-turn with integral check valve to prevent cross-flow and back-flow. Spout to be stainless steel tubular swing style with leak proof double O-ring seal design. Color coded temperature indexes shall meet international standards. 2.2gpm aerator @ 60psi standard with full flow stream bubbler screen spout tip.

Model No.	A	B	C
KL41-4006-SE1	6"(152 mm)	4-3/8"(111mm)	2-5/8"(66mm)
KL41-4106-SE1	6"(152 mm)	4-3/8"(111mm)	2-5/8"(66mm)
KL41-4008-SE1	8"(203mm)	5-5/16"(135mm)	3-1/16"(78mm)
KL41-4108-SE1	8"(203mm)	5-5/16"(135mm)	3-1/16"(78mm)
KL41-4010-SE1	10"(254mm)	5-13/16"(148mm)	3-9/16"(90mm)
KL41-4110-SE1	10"(254mm)	5-13/16"(148mm)	3-9/16"(90mm)
KL41-4012-SE1	12"(304mm)	6-1/4" (159mm)	4"(102mm)
KL41-4112-SE1	12"(304mm)	6-1/4" (159mm)	4"(102mm)

COMPLIES WITH:
 ASME A112.18.1-2005
 CSA B125.1-05
 NSF/ANSI 61/9, ANNEX G
 SECTION 116875 OF THE
 CALIFORNIA HEALTH & SAFETY CODE
 (COMMONLY KNOWN AS AB1953)
 VERMONT ACT 193
 UNIFORM PLUMBING CODE

