

PROJECT NAME: _____

LOCATION: _____

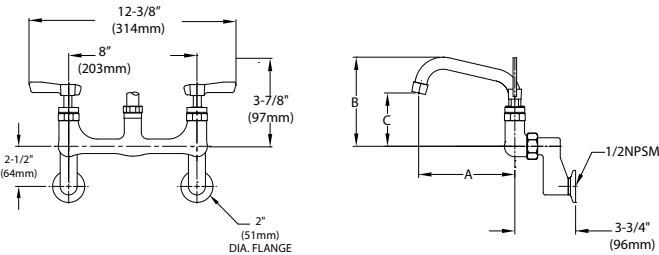
SPECIFIER ITEM NO. _____ **QTY:** _____

ENCORE PART NO. _____

Encore[®] Wall Mount Faucet with
Tubular Swing Spout and Lever Handles

KL54-1xxx-SE1 Series

- KL54-1106-SE1 6" Spout, Ceramic Valves
- KL54-1006-SE1 6" Spout, Compression Valves
- KL54-1108-SE1 8" Spout, Ceramic Valves
- KL54-1008-SE1 8" Spout, Compression Valves
- KL54-1110-SE1 10" Spout, Ceramic Valves
- KL54-1010-SE1 10" Spout, Compression Valves
- KL54-1112-SE1 12" Spout, Ceramic Valves
- KL54-1012-SE1 12" Spout, Compression Valves
- KL54-1114-SE1 14" Spout, Ceramic Valves
- KL54-1014-SE1 14" Spout, Compression Valves
- KL54-1116-SE1 16" Spout, Ceramic Valves
- KL54-1016-SE1 16" Spout, Compression Valves



Dimensions shown in inches (mm) are for reference only and are subject to change.

1-1/2" (29mm) holes for backsplash are recommended to accommodate 1/2" supply nipples.
1/2" NPT Female Inlets
Operating Temperature: 40 - 180°F (5 - 83°C)
Operating Pressure: 15 - 125psi

Approximate shipping weight - 5 lbs
Warranty - 2 years parts

COMPLIES WITH:
ASME A112.18.1-2005
CSA B125.1-05
NSF/ANSI 61/9, ANNEX G
SECTION 116875 OF THE
CALIFORNIA HEALTH & SAFETY CODE
(COMMONLY KNOWN AS AB1953)
VERMONT ACT 193
UNIFORM PLUMBING CODE



Solid heavy duty cast body is specification and commercial quality

Commercial Quality Features

- Tubular swing spout design
- ADA-compliant lever handles
- Built-in check valve to prevent cross-flow and back-flow
- Leak proof double O-ring spout design
- Stainless steel spout

SANIGUARD[®] Product Protection

- Permanently incorporated on all touch points of Encore plumbing fixtures
- Inorganic, silver ion technology inhibits growth of common bacteria, yeasts, mold and fungi, minimizes cross-contamination

SPECIFICATIONS:

Wall Mount Faucet to be Encore KL54 Series in the following configuration:

- _____ KL54-1106-SE1 6" Spout, Ceramic Valves
- _____ KL54-1006-SE1 6" Spout, Compression Valves
- _____ KL54-1108-SE1 8" Spout, Ceramic Valves
- _____ KL54-1008-SE1 8" Spout, Compression Valves
- _____ KL54-1110-SE1 10" Spout, Ceramic Valves
- _____ KL54-1010-SE1 10" Spout, Compression Valves
- _____ KL54-1112-SE1 12" Spout, Ceramic Valves
- _____ KL54-1012-SE1 12" Spout, Compression Valves
- _____ KL54-1114-SE1 14" Spout, Ceramic Valves
- _____ KL54-1014-SE1 14" Spout, Compression Valves
- _____ KL54-1116-SE1 16" Spout, Ceramic Valves
- _____ KL54-1016-SE1 16" Spout, Compression Valves

Faucet body to be constructed of polished chrome plated brass with total lead content less than 0.25% by weighted average. Faucet to have adjustable 2-1/2" offset supply inlets with built in stop and lever handles. Handles to be incorporated with SANIGUARD treatment. Valves to be 1/4-turn with integral check valve to prevent cross-flow and back-flow. Spout to be stainless steel tubular swing style with leak proof double O-ring seal design. Color coded temperature indexes shall meet international standards. 2.2gpm aerator @ 60psi standard with full flow stream bubbler screen spout tip.

Model No.	A	B	C
KL54-1106-SE1	6" (152mm)	5-9/16" (141mm)	3-5/16" (84mm)
KL54-1006-SE1	6" (152mm)	5-9/16" (141mm)	3-5/16" (84mm)
KL54-1108-SE1	8" (203mm)	6-1/16" (154mm)	3-13/16" (96mm)
KL54-1008-SE1	8" (203mm)	6-1/16" (154mm)	3-13/16" (96mm)
KL54-1110-SE1	10" (254mm)	6-1/2" (165mm)	4-1/4" (108mm)
KL54-1010-SE1	10" (254mm)	6-1/2" (165mm)	4-1/4" (108mm)
KL54-1112-SE1	12" (305mm)	6-15/16" (176mm)	4-11/16" (120mm)
KL54-1012-SE1	12" (305mm)	6-15/16" (176mm)	4-11/16" (120mm)
KL54-1114-SE1	14" (355mm)	7-7/16" (187mm)	5-3/16" (131mm)
KL54-1014-SE1	14" (355mm)	7-7/16" (187mm)	5-3/16" (131mm)
KL54-1116-SE1	16" (406mm)	7-7/8" (200mm)	5-5/8" (143mm)
KL54-1016-SE1	16" (406mm)	7-7/8" (200mm)	5-5/8" (143mm)