

PROJECT NAME: _____

LOCATION: _____

SPECIFIER ITEM NO. _____ **QTY:** _____

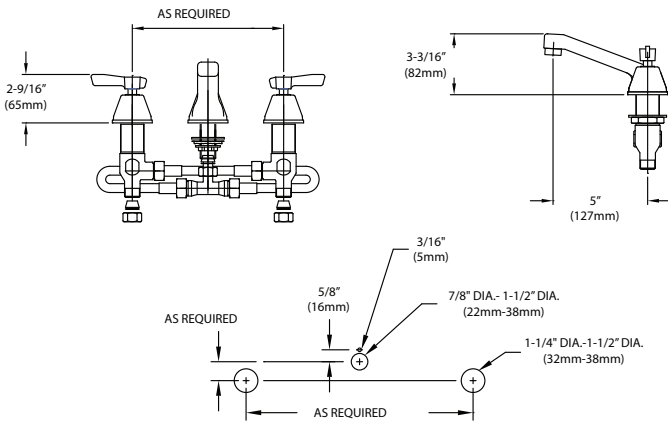
ENCORE PART NO. _____

Encore[®] Deck Mount Widespread Faucet with
 5" (127mm) Cast Spout and Lever Handles

KL84-8x05-CE1 Series

KL84-8105-CE1 5" Spout, Ceramic Valves

KL84-8005-CE1 5" Spout, Compression Valves



Dimensions shown in inches (mm) are for reference only and are subject to change.

1/2" NPSM Male Inlets with Compression Fittings
 Operating Temperature: 40-180°F (5-83°C)
 Operating Pressure: 15-125psi
 1-1/2" (29mm) holes for deck are recommended to accommodate 1/2" supply nipples.

Approximate shipping weight - 8 lbs
 Warranty - 2 years parts

Solid heavy duty cast body is specification and commercial quality

Commercial Quality Features

- 5" (127mm) cast spout design
- ADA-compliant lever handles
- Built-in check valve to prevent cross-flow and back-flow

SANIGUARD[®] Product Protection

- Permanently incorporated on all touch points of Encore plumbing fixtures
- Inorganic, silver ion technology inhibits growth of common bacteria, yeasts, mold and fungi, minimizes cross-contamination

SPECIFICATIONS:

Deck Mount Faucet to be Encore KL84 Series in the following configuration:

_____ KL84-8105-CE1 5" Spout, Ceramic Valves

_____ KL84-8005-CE1 5" Spout, Compression Valves

Faucet body to be constructed of polished chrome plated brass with total lead content less than 0.25% by weighted average. Faucet to have 5"-12" adjustable inlet centers and lever handles to be incorporated with SANIGUARD treatment. Valves to be 1/4-turn with integral check valve to prevent cross-flow and back-flow. Spout to be 5" cast style. Color coded temperature indexes shall meet international standards. 2.2gpm aerator @ 60psi standard with full flow stream bubbler screen spout tip.

COMPLIES WITH:

ASME A112.18.1-2005
 CSA B125.1-05
 NSF/ANSI 61/9, ANNEX G
 SECTION 116875 OF THE
 CALIFORNIA HEALTH & SAFETY CODE
 (COMMONLY KNOWN AS AB1953)
 VERMONT ACT 193
 UNIFORM PLUMBING CODE

