

**PROJECT NAME:** \_\_\_\_\_

**LOCATION:** \_\_\_\_\_

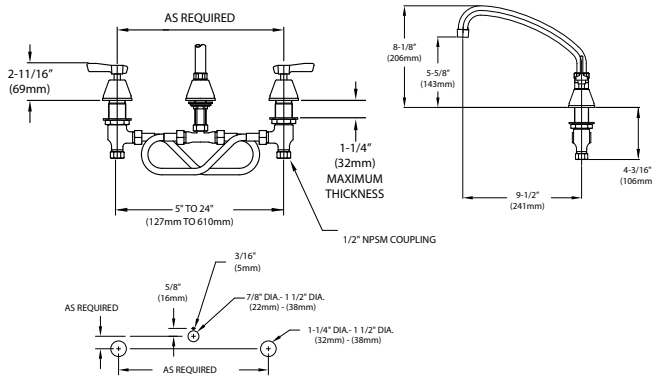
**SPECIFIER ITEM NO.** \_\_\_\_\_ **QTY:** \_\_\_\_\_

**ENCORE PART NO.** \_\_\_\_\_

Encore<sup>®</sup> Deck Mount Widespread Faucet with 9-1/2" Swivel Curved Tubular Spout and Lever Handles

## KL84-8x09-SE1 Series

KL84-8109-SE1 Ceramic Valves  
 KL84-8009-SE1 Compression Valves



Dimensions shown in inches (mm) are for reference only and are subject to change.

1/2" NPSM Male Inlets with Compression Fittings  
 Operating Temperature: 40-180°F (5-83°C)  
 Operating Pressure: 15-125psi  
 1-1/8" (29mm) holes for deck are recommended to accommodate 1/2" supply nipple.

Approximate shipping weight - 8 lbs  
 Warranty - 2 years parts

Solid heavy duty cast body is specification and commercial quality

### Commercial Quality Features

- Swivel curved tubular swing spout design
- ADA-compliant lever handles
- Built-in check valve to prevent cross-flow and back-flow

### SANIGUARD<sup>®</sup> Product Protection

- Permanently incorporated on all touch points of Encore plumbing fixtures
- Inorganic, silver ion technology inhibits growth of common bacteria, yeasts, mold and fungi, minimizes cross-contamination

### SPECIFICATIONS:

Deck Mount Faucet to be Encore KL84 Series in the following configuration:

- \_\_\_\_\_ KL84-8109-SE1 Ceramic Valves
- \_\_\_\_\_ KL84-8009-SE1 Compression Valves

Faucet body to be constructed of polished chrome plated brass with total lead content less than 0.25% by weighted average. Faucet to have 5"-24" adjustable inlet centers. Lever handles to be incorporated with SANIGUARD treatment. Valves to be 1/4-turn with integral check valve to prevent cross-flow and back-flow. Spout to be swivel curved tubular style. Color coded temperature indexes shall meet international standards. 2.2gpm aerator @ 60psi standard with full flow stream bubbler screen spout tip.

### COMPLIES WITH:

ASME A112.18.1-2005  
 CSA B125.1-05  
 NSF/ANSI 61/9, ANNEX G  
 SECTION 116875 OF THE  
 CALIFORNIA HEALTH & SAFETY CODE  
 (COMMONLY KNOWN AS AB1953)  
 VERMONT ACT 193  
 UNIFORM PLUMBING CODE

