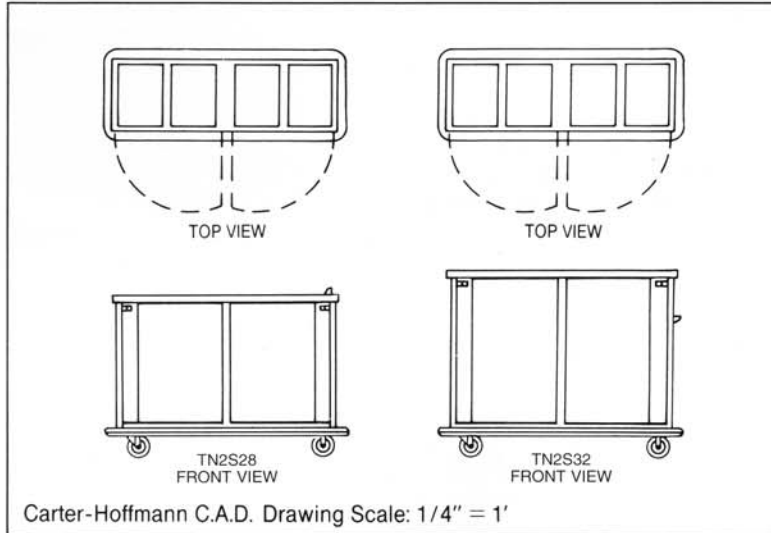




TN2S SERIES ENCLOSED MOBILE TRAY CARTS

Two Door, One Tray Per Slide



CARTER-HOFFMANN
B11 FOOD SERVICE EQUIPMENT
ENCLOSED MOBILE TRAY CARTERS

SPECIFICATIONS

Model Number	Tray Capacity for 12" Wide Trays (One Per Slide)	Vertical Tray Spacing		Maximum Inside Working Height	WHEELS			DIMENSIONS						Shipping Weight			
					in	mm	Dia In	Swivel	Rigid	Height		Depth				Width	
										in	mm	in	mm			in	mm
<input type="checkbox"/> TN2S20	20	5 1/4	(133)	30 1/2	(775)	6	2	2	40 9/16*	(1030)*	28	711	64 3/8	(1635)	315	143	
<input type="checkbox"/> TN2S24	24	4 3/4	(121)	30 1/2	(775)	6	2	2	40 9/16*	(1030)*	28	711	64 3/8	(1635)	315	143	
<input type="checkbox"/> TN2S28	28	4 1/4	(108)	30 1/2	(775)	6	2	2	40 9/16*	(1030)*	28	711	64 3/8	(1635)	315	143	
<input type="checkbox"/> TN2S32	32	4 3/4	(121)	39	(991)	6	2	2	49 1/16	(1246)	28	711	64 3/8	(1635)	368	167	
<input type="checkbox"/> TN2S36	36	4 1/4	(108)	39	(991)	6	2	2	49 1/16	(1246)	28	711	64 3/8	(1635)	368	167	

*Add 2 1/8" (54mm) to height for top-mounted push handle.

CONSTRUCTION...Welded cabinet construction. Outer cabinet formed and welded to base. All seams turned in to simplify cleaning and eliminate raw edges.

CABINET MATERIALS...18 gauge, nickel-bearing type 300 series stainless steel with polished exterior wall.

BASE FRAME...12 gauge stainless steel caster bolsters with 1" x 1" tubular stainless steel perimeter channel supports.

CASTERS...6" diameter, institutional grade casters with non-marking rubber tread. Delrin sleeve axle bearings and double ball bearing swivel with Zerk grease fittings. Two casters are fixed and two are swivel. Casters are plate mounted and bolted to base.

WHEEL AHEAD PATTERN...Casters are mounted in an offset pattern so that only one wheel can pass over raised surfaces at one time, for improved control.

BUMPER...Non-marking gray vinyl bumper set in heavy duty 3/16" extruded aluminum frame with reinforced corner "cutouts".

DOORS...Double wall stainless steel construction. Door cavity filled with 1" thick fiberglass insulation for sound deadening. Center hung, allowing 180° door swing. Full length door stop is formed in cabinet.

LATCHES...Flush mounted sliding latch with adjustable door strike; custom designed for heavy duty applications.

HINGES...12 gauge stainless steel with 3/8" pin.

PUSH HANDLE...1" diameter stainless steel mounted on end or top, depending on model. Push handle extends the full depth of the cabinet.

STYLING...Stainless steel finish with functional vinyl door stripe.

VENTS...Louvered vents on both ends to allow escape of excessive heat and moisture build up.

TRAY RACK ASSEMBLIES...18 gauge stainless steel; removable, without tools, for ease of cleaning.

TRAY SLIDES...One 12" wide tray per slide (up to 22" in length), end-loaded. Two slide assembly pairs per door.

ACCESSORIES/OPTIONS...

- Polyurethane Tread Casters
- Semi-Pneumatic Casters
- All Swivel Casters
- Wheel Brakes
- 6 Wheel Configuration
- Floor Drain with Plug
- Extra Push Handle
- 3 and 4 Sided Top Rail
- Menu Card Holder
- Top-Mounted Transport Latch
- Trailer Hitch
- Vinyl Covered Top
- Cart Wash Package

Specifications subject to change through product improvement & innovation.



CARTER-HOFFMANN CORP.

1551 McCormick Ave., Mundelein, IL 60060
Tel (847) 362-5500 • (800) 323-9793 • Fax (847) 367-8981
www.carter-hoffmann.com

Printed in U.S.A. L20 0599
The name Carter shown is a registered trade name of Carter-Hoffmann Corp.