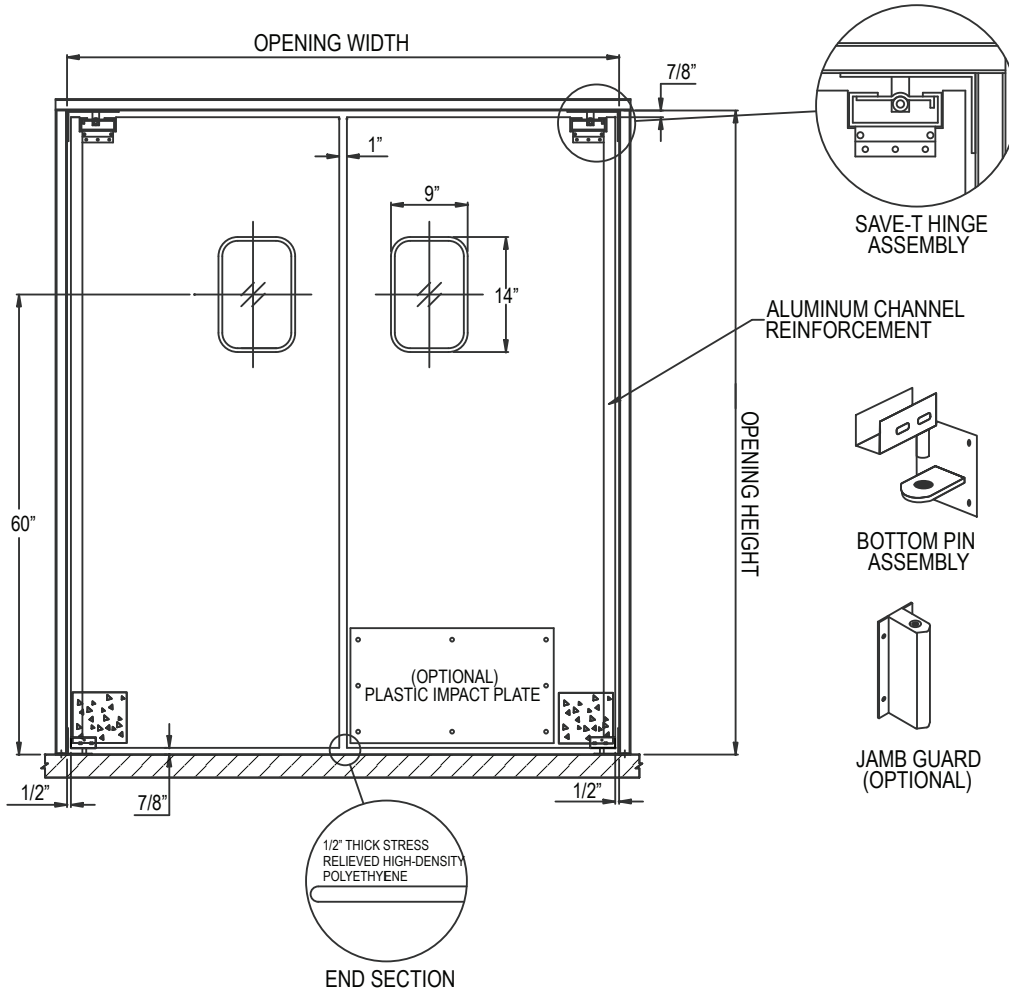
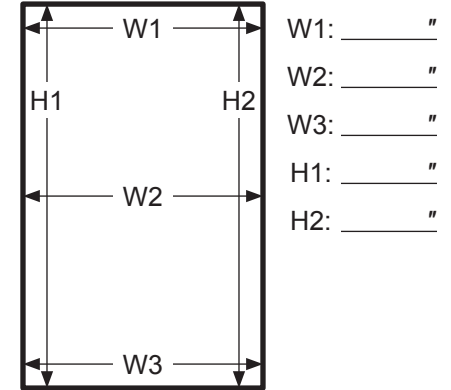


# SERVICE-PRO® SERIES 70 SWINGING DOOR



## DOOR OPENING DIMENSIONS



Please Note: These measurements pertain to the door opening, NOT the actual door.

## DOOR SPECIFICATION

- Bi-Parting (Double Panel)  Single Panel  
 Left  Right

## HDPE SHEET COLOR

- White  Beige  
 Black  Gray  
 Red

## WINDOW SIZE

- 9"x14" (Standard)  10"x30"  
 14"x16"  22"x22"  
 10" Round  20" Round

Window must be 8" narrower than the door panel width.

## IMPACT PLATES (MATERIAL/HEIGHT)

- Stainless Steel\*  Diamond Tread\*  
 .093" ABS  .125" ABS  
 Teardrop Bumpers  
 12"  18"  24"  30"  36"  42"  48"  
\* Only available in 12", 18" or 24".

## HARDWARE

- Save-T Hinge Assembly & Bottom Pin (Standard)  
 Stainless Steel Save-T Hinge Assembly & Bottom Pin  
 Jamb Guard  
 3"x10" Aluminum  3"x10" Stainless Steel  
 5"x18" Galvanized Steel  
 Push Plates  
 ABS  Stainless Steel

## CUSTOM SPECIFICATIONS

### APPLICABLE MODELS: SERIES70

### STANDARD SERIES 70 FEATURES:

- .500" Polyethylene (HDPE) Construction
- Aluminum U-channel
- Save-T Hinge Assembly & Bottom Pin
- 9"x14" Window

*Pictured: Double Panel SERIES70 with Impact Plates*

**SIGNATURE REQUIRED**

JOB NAME/LOCATION \_\_\_\_\_

CUSTOMER/LOCATION \_\_\_\_\_

ORDER # \_\_\_\_\_ CUSTOMER PO # \_\_\_\_\_

Charges will be assumed by buyer for changes or cancellations to work in process. Buyer hereby accepts responsibility for all sizes and dimensions. This order will not be processed until all acknowledgment forms are signed and returned.

**X** \_\_\_\_\_ DATE \_\_\_\_\_