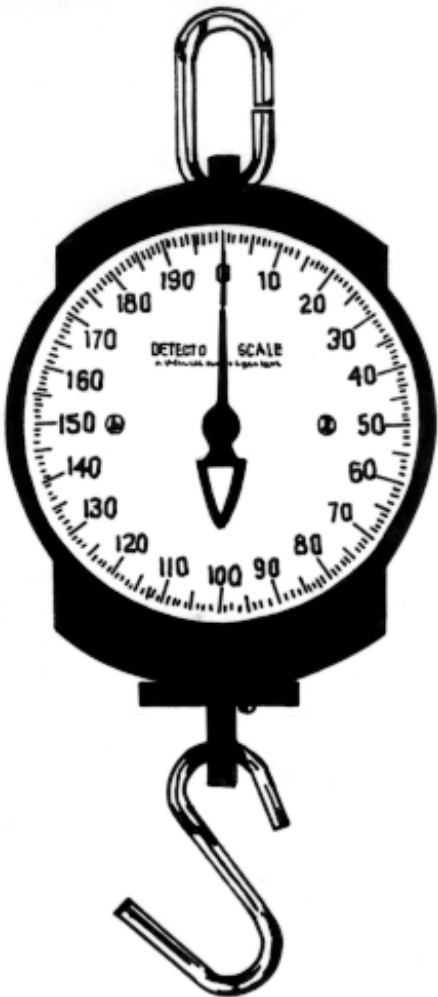


# Hanging Dial Scales

## Aluminum Dial Scale

Ruggedly built, general utility scale for multipurpose, bulk weighings. Will weigh large or small quantities with speed and accuracy. Extra large, clear aluminum dial. Durable heavy cast iron protective housing to enclose precision parts from dust and weather elements.

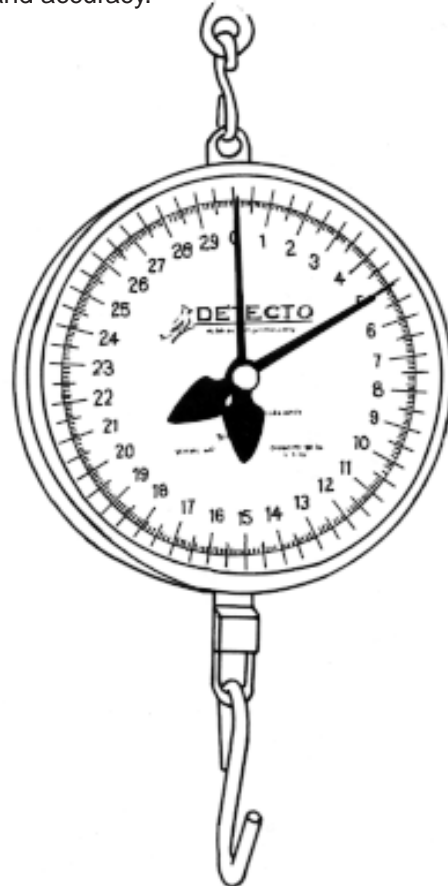


**Model:** 11S200H  
**Capacity:** 200 lb x 1/2 lb  
**Dial Size:** 7"

**Model:** 11S400H  
**Capacity:** 400 lb x 1 lb  
**Dial Size:** 7"

## Utility Scale

This rugged hanging scale was designed for heavy-duty use and is an ideal scale for a variety of uses. The 8" dial is easy-to-read and incorporates an adjustable pointer which may be set anywhere on the dial in order to offset additional weight. Both net and gross weights are indicated fast and accurately with knife-blade pointers. The dial mechanism is protected by a lens while the plastic housing eliminates dents and scratches thereby enhancing long-term use and accuracy.



**Model:** MCS-60M  
**Capacity:** 60 lb at 2 revolutions

**Graduations:** 1/10 lb  
**Chart:** 30 lb x .1 lb  
**Dial Size:** 8"



With 4" "S" hook and adjustable tare pointer

Cardinal Scale reserves the right to improve, enhance and modify features and specifications without prior notice.