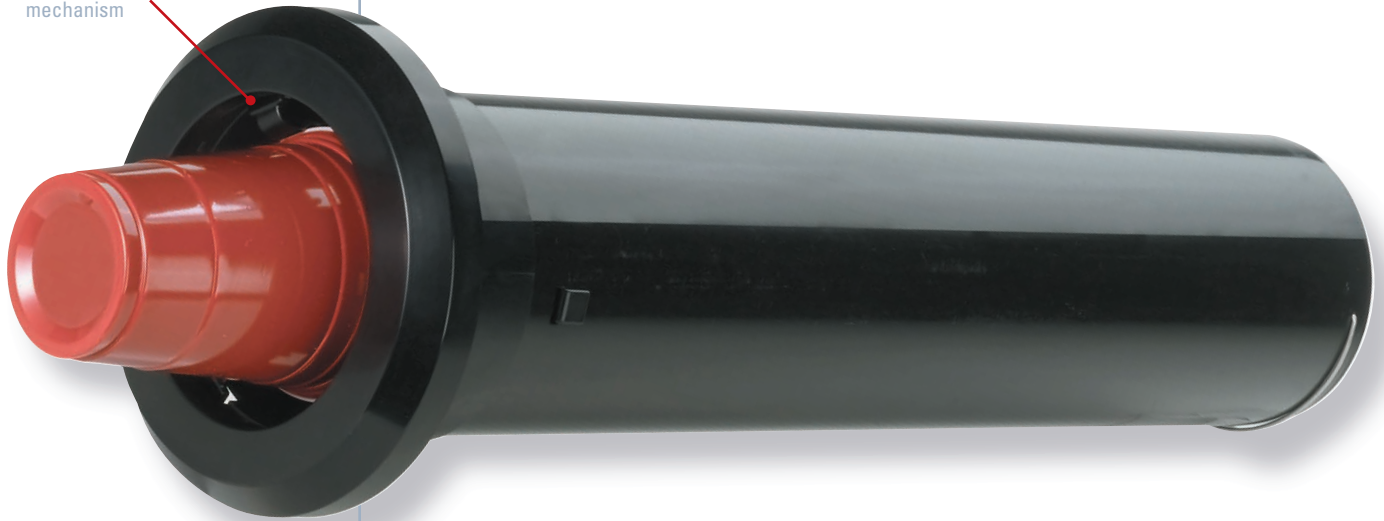


## PRECISION ADJUSTMENT DISPENSING FLEXIBILITY

**DISPENSE-RITE**  
simple and fast  
precision adjustment  
mechanism



### STL SERIES ONE-SIZE-FITS-ALL IN-COUNTER ADJUSTABLE CUP DISPENSERS

**DISPENSE-RITE** STL-2 cup dispensers are the only dispensers you will need for a variety of paper, plastic and foam cups ranging from 8 oz. to 44 oz. STL-2 cup dispensers utilize a simple and fast tool free adjustment mechanism. These dispensers are designed for cups and containers with rim diameters ranging from 3 $\frac{3}{8}$ " – 4 $\frac{1}{2}$ ".

**DISPENSE-RITE's** precision three clip adjustment mechanism combined with a calibrated compression spring ensures one at a time dispensing in horizontal, angled or vertical mounting positions. Innovative design allows the dispenser to be adjusted without removing from the counter. Quality ABS plastic construction with a no-jam design provides years of dispensing reliability.

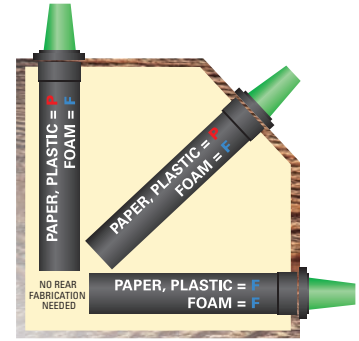
The integrated mounting collar fully supports the dispenser in horizontal, angled or vertical mounting positions; no additional support is necessary. Optional silver satin ring bezels are available. All models are NSF listed.

**NSF**

- Models listed on page 07 ship with 2 different compression springs: "F" & "P". See chart on page 02 for details.
- NOTE: Ounce capacities are provided for reference only, always verify cup rim diameter prior to ordering.

| Model Number | Cup Rim Diameter Range | Under Counter Length | Ring Bezel Diameter | Mounting Hole Cut-Out |
|--------------|------------------------|----------------------|---------------------|-----------------------|
| STL-2        | 3⅞"–4½"                | 22"                  | 7⅞"                 | 5¼"                   |
| STL-2S       | 3⅞"–4½"                | 17"                  | 7⅞"                 | 5¼"                   |
| STL-2L       | 3⅞"–4½"                | 28"                  | 7⅞"                 | 5¼"                   |

## Spring Configurations ▾



| Cup Type     | Position       | Spring            |
|--------------|----------------|-------------------|
| Foam Cups    | : Any Position | : <b>F</b> Spring |
| Paper Cups   | : Horizontal   | : <b>F</b> Spring |
| Plastic Cups | : Horizontal   | : <b>F</b> Spring |
| Paper Cups   | : Angled       | : <b>P</b> Spring |
| Plastic Cups | : Angled       | : <b>P</b> Spring |
| Paper Cups   | : Vertical     | : <b>P</b> Spring |
| Plastic Cups | : Vertical     | : <b>P</b> Spring |

Dispensers ship with both the "F" and "P" compression springs.

Single spring models are available; see price list for additional information.

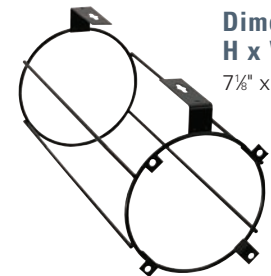
## Color Ring Bezels ▾

Optional colored ring bezels are available in this popular color:

- SILVER SATIN (stainless finish)



## Under Counter Bracket ▾



**Dimensions**  
H x W x D

7⅞" x 6" x 15¼"

The optional **STL-2-SMB** wire surface mount bracket mounts to any flat surface or wire shelf and allows you to mount a STL-2 cup dispenser in horizontal, vertical or angled positions. Maximum counter lip is 1/2".

## STL-2, STL-2S AND STL-2L ONE-SIZE-FITS-ALL IN-COUNTER ADJUSTABLE CUP DISPENSERS

With three under counter lengths to choose from the STL-2 cup dispenser can be ordered to suit your particular installation requirements.



**STL-2** 22" UNDER COUNTER LENGTH



**STL-2S** 17" UNDER COUNTER LENGTH



**STL-2L** 28" UNDER COUNTER LENGTH



The STL-2 dispenser accommodates a variety of cup sizes ranging from 8 oz. to 44 oz. Always verify cup rim diameter prior to ordering.

### SIZE-RITE

| MODEL  | APPROX. CUP SIZE |
|--------|------------------|
| STL-2  | 8 oz. to 44 oz.  |
| STL-2S | 8 oz. to 44 oz.  |
| STL-2L | 8 oz. to 44 oz.  |