



"Your Solutions Partner"

Specifications

F.O.B Sedalia, Missouri 65301



309-25
Shown with optional
3 bar tray slide

OPTIONS:

- Sliding doors - **A329-xPG/xSS/A329-xSS**
- Door locks
- Serving shelves w/glass protector panels - **A956-460-x**
- Glass display shelves - **A98x**
- Self Service Canopies - **TS530-xx, TS530-xx-1SN**
- Buffet shelves - **A83x**
- Stainless steel carving boards - **A442-xS/a445-xS**
- Solid tray slides - **SOLID - FX/HD**
- 3 bar tray slides
- Kick plates
- 5" casters, 2 swivel w/locks - **AACA-SW**
- Cutouts in top - **ACMOD-8, -9, -10, -11**
- Stainless steel dish shelf - **A441-xS**
- Drop brackets on tray slide - **AHD-BRKT-3BTS**
- Wood carving boards - **A442-xW/A445-xW**
- Veneered plastic laminate panels on body
- Special powder coat painted body
- Odd lengths - specify
- Duplex outlets - **ACMOD-8, -9, -10, -11**
- 6 ft. cord and plug - **ACORD**
- Body latches - **14695**
- Open base - omit undershelves
- Heat-in-Base Module - **HTD-BASE-M**
- Tier of stainless steel angle sides

AGENCY LISTINGS:



DUKE MANUFACTURING CO.
2305 N. Broadway
St. Louis, MO 63102

800.735.3853 Toll Free
314-231-1130 In Missouri
314.231.5074 Fax
www.dukemfg.com

Approval Stamp(s):

PRODUCT INFORMATION:

PROJECT: _____
ITEM: _____
QUANTITY: _____

MODEL:

AeroServ Serving Systems Solid Top Units

- 318-25 18" length
- 308-25 32" length
- 309-25 46" length
- 310-25 60" length
- 311-25 74" length

TOP:

- 20 gauge, 300 Series stainless steel
- Sound deadening vinyl foam tape

BODY:

- Paint grip or stainless steel
- Choice of (12) powder coat paint colors (must choose one)
 - #217105 - Designer White
 - #217150 - Orange
 - #217107 - Hollyberry Red
 - #217127 - Fence Green
 - #217102 - Silver Hammer
 - #217101 - Semi-Gloss Black
 - #217103 - Natural Almond
 - #217154 - Racing Red
 - #217120 - Sky Blue
 - #217152 - Stone Gray
 - #217113 - Brown Kickplate
 - #217125 - Textured Black
- Flanged or channeled edges
- Welded together with local reinforcements
- Mounted on 6" stainless steel legs with adjustable feet

SHORT FORM SPECIFICATIONS:

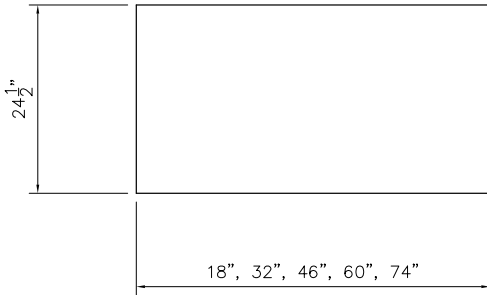
Duke AeroServ Serving Systems - Solid Top Units. Top shall be constructed of 20 gauge, 300 Series stainless steel, flanged down 2" at 90°. Edges on all sides and ends flanged down 2" against body. Body and shelves shall be formed of paint-grip steel with powder coat paint or stainless steel, with integrally flanged or channeled edges for rigidity and structural strength. Each body individually welded together with local reinforcements as required. 6" polished stainless steel legs to be furnished. Must add "PG" to model number for Paint Grip Bodies, "SS" for Stainless steel bodies.

ASC-04

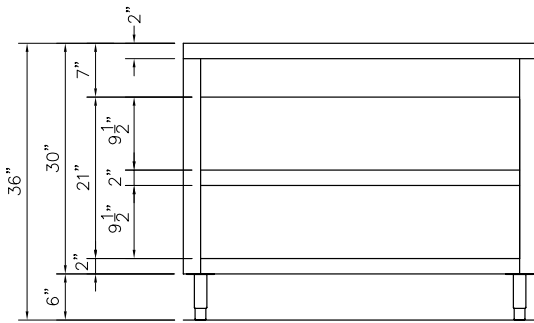


**AEROSERV SERVING SYSTEMS
SOLID TOP UNITS**

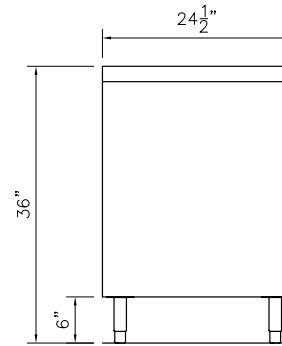
- 318-25 18" length
- 308-25 32" length
- 309-25 46" length
- 310-25 60" length
- 311-25 74" length



TOP VIEW



FRONT VIEW



RIGHT SIDE VIEW

DIMENSIONS:

FREIGHT CLASS: 150

Model	Depth		Width		Height		Cube ft. crated	Weight	
	in	cm	in.	cm	in.	cm		lbs	kg
318-25	18	45.7	24-1/2	62.2	36	91.4	17.4	200	90.9
308-25	32	81.3	24-1/2	62.2	36	91.4	28.6	217	98.6
309-25	46	116.8	24-1/2	62.2	36	91.4	39.1	274	124.6
310-25	60	152.4	24-1/2	62.2	36	91.4	49.6	331	150.5
311-25	74	188.0	24-1/2	62.2	36	91.4	60.1	386	175.5



"Your Solutions Partner"

DUKE MANUFACTURING CO.
2305 N. Broadway
St. Louis, MO 63102

800.735.3853 Toll Free
314.231.5074 Fax
www.dukemfg.com

Specification subject to change

06/08
Printed in U.S.A
© 2008, Duke Manufacturing Co.