



"Your Solutions Partner"

Specifications

F.O.B. Sedalia, Missouri 65301



334-25PG

*Shown with optional casters and shelf.
Tray slide omitted.*

OPTIONS:

- Sliding doors - **A328-xPG/xSS**
- Door locks
- 220v - 50 Hz compressor
- Condensate evaporator - **COND-EVAP**
- Serving shelves w/glass protector panels (**A956-460-x**)
- Glass display shelves (**A98x**)
- Self Service Canopies (**TS530-xx, TS530-xx-1SN**)
- Buffet shelves (**A83x/A93x**)
- Stainless steel carving boards - **A442-xS/A445-xS**
- Wood carving board - **A442-xW/A45-xW**
- Stainless steel dish shelf - **A441-xS**
- Solid tray slides - **ASOLID-FX/HD**
- Kick plates
- Flanged feet - **AC-FF**
- 5" casters, 2 swivel w/locks - **AACA-SW**
- Drop brackets on tray slide - **AHD-BRKT-3BTS**
- Veneered plastic laminate panels on body
- Special powder coat painted body
- Body latches - **14695**
- Electric outlet inside base

AGENCY LISTINGS:



DUKE MANUFACTURING CO.
2305 N. Broadway
St. Louis, MO 63102

800.735.3853 Toll Free
314.231.1130 In Missouri
314.231.5074 Fax
www.dukemfg.com

Approval Stamp(s):

PROJECT INFORMATION:

PROJECT: _____
ITEM: _____
QUANTITY: _____

MODEL:

AeroServ Serving Systems Frost Top Units

- 333-25** 46" length unit/35-3/4" length top surface
- 334-25** 60" length unit/49-3/4" length top surface
- 335-25** 74" length unit/63-3/4" length top surface

TOP:

- 20 gauge, 300 Series stainless steel
- Cut-out, flanged down and attached to perimeter trough

FROST-TOP SURFACE:

- Stainless steel refrigerated platform
- Elevated 1" above counter top
- Flanged down all four sides
- Attached to condensate trough
- Trough pitched to 1" cast brass drain on operator's right

REFRIGERATION:

- Copper coils attached to underside of Frost Top, R134A refrigerant
- Sealed and insulated with 1" urethane foam
- Compressor compartment with air cooled condensing unit
- On-Off switch
- Cord and plug provided - NEMA 5-15

BODY:

- Paint grip or stainless steel
- Choice of (12) powder coat paint colors (must choose one):
 - #217105 - Bright White
 - #217103 - Natural Almond
 - #217150 - Orange Red
 - #217154 - Racing Red
 - #217107 - Hollyberry Red
 - #217120 - Sky Blue
 - #217127 - Fence Green
 - #217152 - Stone Gray
 - #217102 - Duke Silver
 - #217113 - Brown Kickplate
 - #217101 - Semi-Gloss Black
 - #217125 - Textured Black
- Flanged or channeled edges
- Welded together with local reinforcements
- Compressor compartment with removable louvered grille
- Mounted on stainless steel legs with adjustable feet

TRAY SLIDES:

- 18 gauge, 1" diameter stainless steel tubing
- 3-bar, mounted with screws
- Stainless steel fixed brackets
- Stainless steel end caps
- 34" high or less

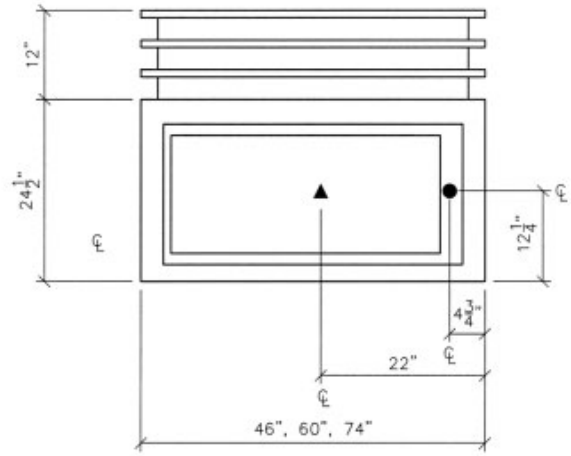
SHORT FORM SPECIFICATIONS:

Duke AeroServ Serving Systems - Frost Top Units. Top shall be formed of 20 gauge, 300 Series stainless steel, flanged down and attached to perimeter trough. Frost Top surface formed of stainless steel platform, elevated 1" above counter top, flanged down all four sides, attached to condensate trough which is pitched to 1" cast brass drain (located on operator's right). Copper coils attached under Frost Top. Condensing unit, controls and electric cord and plug to be supplied. Compressor compartment covered by removable louvered grille. Body and shelves shall be formed of paint-grip steel with powder coat paint or stainless steel with integrally flanged or channeled edges for rigidity and structural strength. Each body individually welded together with local reinforcements as required. A 3-bar, 18 gauge, 1" diameter stainless steel tubing tray slide, mounted on stainless steel fixed brackets shall be furnished. Tray slide adds 12" to overall body width. 6" polished stainless steel legs to be furnished. Must add "**PG**" to model number for Paint Grip Bodies; "**SS**" for Stainless Steel Bodies.

AeroServ

AEROSERV SERVING SYSTEMS FROST TOP UNITS

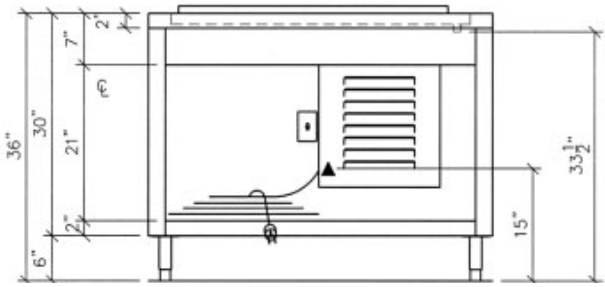
- ☐ **333-25** 46" length unit/35-3/4" length top surface
- ☐ **334-25** 60" length unit/49-3/4" length top surface
- ☐ **335-25** 74" length unit/63-3/4" length top surface



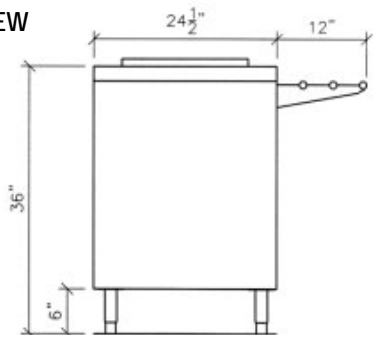
TOP VIEW

LEGEND	
▲	- ELECTRIC CONNECTION POINT SINGLE PHASE
●	- DRAIN LOCATION

FRONT VIEW



SIDE VIEW



DIMENSIONS:

Freight Class: 100

Model	Length		Width		Height		Cube ft. crated	Weight		Top Surface			
	in.	cm	in.	cm	in.	cm		lbs.	kg	Length		Width	
										in.	cm	in.	cm
333-25	46	116.8	24-1/2	62.2	36	91.4	39.1	220	100.0	35-3/4	90.8	17-1/2	44.5
334-25	60	152.4	24-1/2	62.2	36	91.4	49.6	284	129.1	49-3/4	126.4	17-1/2	44.5
335-25	74	188.0	24-1/2	62.2	36	91.4	60.1	349	158.6	63-3/4	161.9	17-1/2	44.5

ELECTRICAL SPECIFICATIONS:

Model	120 Volt		HP
	Amps	NEMA	
333-25	6.0	5-15	1/4
334-25	6.0	5-15	1/4
335-25	6.0	5-15	1/4



DUKE MANUFACTURING CO.
2305 N. Broadway
St. Louis, MO 63102

800.735.3853 Toll Free
314.231.1130 In Missouri
314.231.5074 Fax
www.dukemfg.com

"Your Solutions Partner"