



"Your Solutions Partner"

Specifications

F.O.B Sedalia, Missouri 65301



613Q-E4

(Shown w/optional casters)

OPTIONS:

- ☐ Stainless steel interior
- ☐ Stainless steel back enclosure panel
- ☐ Seismic feet
- ☐ High Voltage (380/415/440/480)
- ☐ Casters
- ☐ Double stack - shipped assembled
- ☐ Porcelain drip tray
- ☐ Extra oven racks - standard and deep depth
- ☐ Prison package - tamper proof screws, lexan hinged cover with lockable clasp
- ☐ Extended warranty

AGENCY LISTINGS:



DUKE MANUFACTURING CO.

2305 N. Broadway

St. Louis, MO 63102

800.735.3853 Toll Free

314-231-1130 In Missouri

314.231.5074 Fax

www.dukemfg.com

Approval Stamp(s):

PRODUCT INFORMATION:

PROJECT: _____

ITEM: _____

QUANTITY: _____

MODEL:

Duke Convection Ovens - "Q" Series Double Section - Deep Depth - Electric

☐ **613Q-E4** Double section, deep depth

STANDARD FEATURES:

- 6 racks/13 rack positions
- Porcelain interior finish
- 50/50 stainless steel doors
- Double pane glass both doors
- 8" angular painted legs

OVEN SECTION:

- Stainless steel front, sides and top
- 1-1/2" insulation on bottom, sides and back
- 3" insulation on top

OVEN CONTROLS:

- ☐ "V" - Basic snap action thermostat (200° - 500°F), 60 minute electric dial timer with continuous sound buzzer, 2-speed fan
- ☐ "XX" - Solid state digital time and temperature controls, 12-hour countdown timer, **Cook and Hold** feature, 2-speed fan, Pulse fan capability
- ☐ "ZZ" - 10 programmable menu buttons, 5-rack ID timers, computerized digital time and temperature controls, Cook and Hold feature, 2-speed fan, Pulse Fan capacity

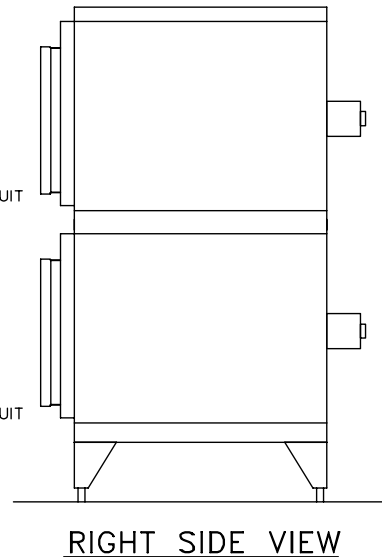
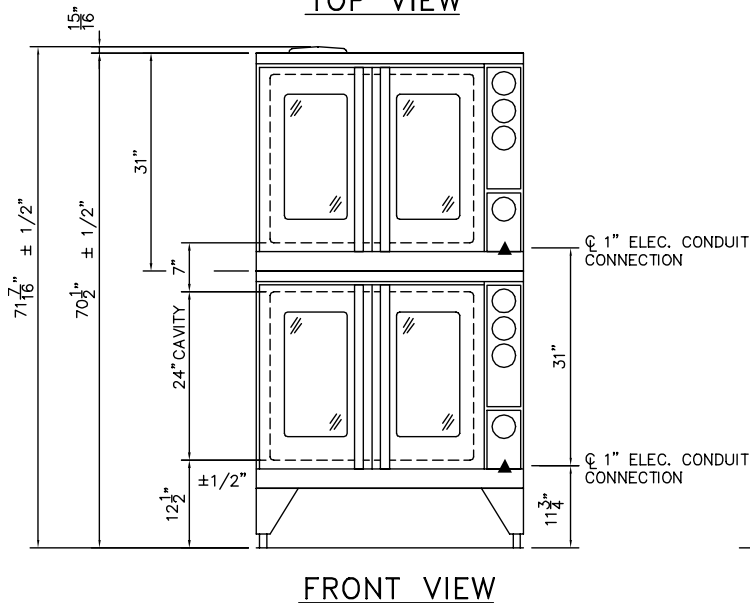
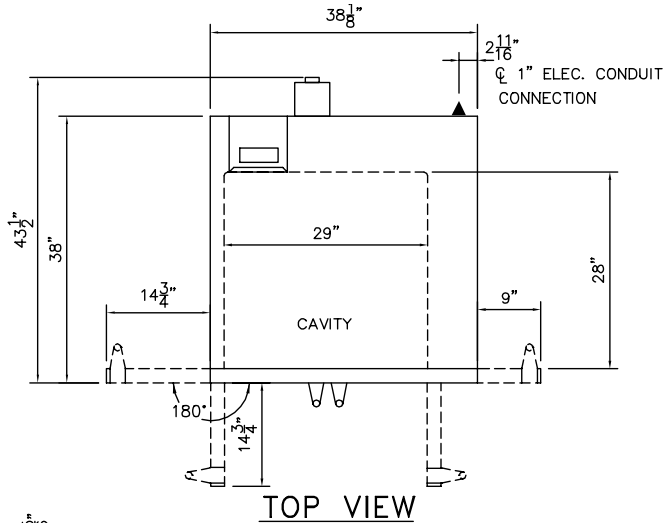
SHORT FORM SPECIFICATIONS:

Duke Convection Ovens - "Q" Series - Electric - Double Section - Deep Depth.

Unit shall have stainless steel exterior front, sides, door, top, interior door liners and door gaskets. Bottom, back and sides, to be fully insulated with 1-1/2" thick board type insulation, top to have 3" thick insulation. Interior shall be porcelain enameled interior, with 6 racks and 13 rack positions and 7/8" radius coved corners. Each oven section shall be heated with 11 KW input, with 1/2 HP, 2-speed blower motor. Fuse protected against overload. An ON-OFF-COOL DOWN switch shall be supplied. Doors shall be 50/50 independently opening, stainless steel with doublepane glass in both doors mounted on full length solid stainless steel shafts and bronze bushings for each door. Interior lighting to be (2) 50 watt, 115v bulbs. Legs shall be angular 8" high stainless steel, with adjustable feet. Two speed blower motor. Overall dimensions of unit shall be: 70-1/2" height, including 8" legs, 38" width, depth of 43-1/2" and cavity dimensions of 29"W x 24"H x 28"D.

DUKE CONVECTION OVENS**"Q" SERIES - DOUBLE SECTION - ELECTRIC - DEEP DEPTH**☐ **613Q-E4** Double section, deep depth

Electrical Specifications - Per Section				
	208V Amps	240V Amps	408V Amps	KW
1 Phase	52.8	45.8	n/a	11.0
3 Phase	30.5	26.5	13.3	11.0
▲ - Electronic connection point				



DIMENSIONS:

FREIGHT CLASS: 85

Model	Depth front view		Width		Height top view		Cube ft. crated	Weight	
	in	cm	in.	cm	in.	cm		lbs	kg
613Q-E4	43-1/2	110.5	38	96.5	70-1/2	179.1	76.5	1020	464.0

**"Your Solutions Partner"**

DUKE MANUFACTURING CO.
 2305 N. Broadway
 St. Louis, MO 63102

800.735.3853 Toll Free
 314.231.5074 Fax
www.dukemfg.com

Specification subject to change

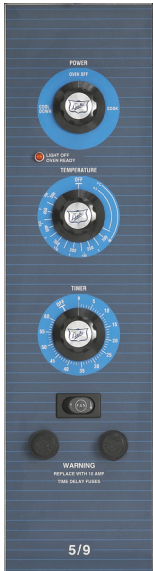
06/08
 Printed in U.S.A.
 © 2008, Duke Manufacturing Co.



"Your Solutions Partner"

Specifications

F.O.B Sedalia, Missouri 65301



V Control



ZZ Control



XX Control

AGENCY LISTINGS:



DUKE MANUFACTURING CO.
2305 N. Broadway
St. Louis, MO 63102

800.735.3853 Toll Free
314-231-1130 In Missouri
314.231.5074 Fax
www.dukemfg.com

Approval Stamp(s):

PRODUCT INFORMATION:

PROJECT: _____

ITEM: _____

QUANTITY: _____

MODEL:

Duke Convection Ovens Accessories and Options

OVEN CONTROLS:

- ☐ "V" - Basic snap action thermostat (200° - 500°F), 60 minute electric dial timer with continuous sounding buzzer, 2-speed fan
- ☐ "XX" - Solid state digital time and temperature controls, 12-hour countdown timer, **Cook and Hold** feature, 2-speed fan, Pulse fan capability
- ☐ "ZZ" - 10 programmable menu buttons, 5-rack ID timers, computerized digital time and temperature controls, Cook and Hold feature, 2-speed fan, Pulse Fan capacity - **Not Available On Gas Ovens**

OPTIONS:

For Gas and Electric Convection Ovens

- ☐ Stainless steel interior
- ☐ 8" or 27" stainless steel angular legs
- ☐ Open leg base, stainless steel, w/rack guides
- ☐ Double stacked ovens - shipped assembled
- ☐ Stainless steel back enclosure panel
- ☐ Casters
- ☐ Seismic feet
- ☐ Field stacking kit
- ☐ Porcelain drip tray
- ☐ Extra oven racks - standard and deep depth
- ☐ Prison package - tamper proof screws, lexan hinged covers with lockable clasp
- ☐ Extended warranty

For Gas Ovens Only

- ☐ 48" flexible disconnect, with restraining device
- ☐ Down draft hood
- ☐ Flue deflector
- ☐ Common gas manifold

For Electric Ovens Only

- ☐ High voltage - 380/415/440/480

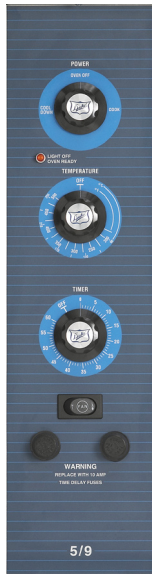
SHORT FORM SPECIFICATIONS:

Duke Convection Ovens - Accessories and Options. Three (3) control panels for electric 613, 613Q & 59-E series ovens, 2 oven control panels for gas 613 & 613Q series oven. Only "V" oven controls for E101 and E102 series ovens. Baking Station and Baking Centers available with "XX" and "ZZ" control panels. See above for specific options regarding gas and electric convection ovens.

DUKE CONVECTION OVENS ACCESSORIES AND OPTIONS

OVEN CONTROLS:

- ☐ "V" - Basic snap action thermostat (200° - 500°F), 60 minute electric dial timer with continuous sounding buzzer, 2-speed fan
- ☐ "XX" - Solid state digital time and temperature controls, 12-hour countdown timer, **Cook and Hold** feature, 2-speed fan, Pulse fan capability
- ☐ "ZZ" - 10 programmable menu buttons, 5-rack ID timers, computerized digital time and temperature controls, Cook and Hold feature, 2-speed fan, Pulse Fan capacity



V Control



ZZ Control



XX Control



"Your Solutions Partner"

DUKE MANUFACTURING CO.
2305 N. Broadway
St. Louis, MO 63102

800.735.3853 Toll Free
314.231.5074 Fax
www.dukemfg.com

Specification subject to change

06/08
Printed in U.S.A
© 2008, Duke Manufacturing Co.