



"Your Solutions Partner"

Specifications

F.O.B. Sedalia, Missouri 65301



ASI-3ESL-SW

OPTIONS:

- 3 phase wiring (except **ASI-1ESL-SW**)
- Manifold, per well
- Master globe valve
- Individual valves - per section
- Glass display shelves - **98x Series**
- Serving shelves - **956/956-460-x Series**
- Buffet shelves - **83x, 93xFL, 93xHT, 93xBL**
- Telescope covers - **#548, 546**
- Hardwood carving board - **#445W**
- S/S carving surface - **#445-S**
- S/S dish shelf - **#441-S**
- Adapter Plates- **31, 32, 33**
- Drop-in style top rim

AGENCY LISTING:



DUKE MANUFACTURING CO.
2305 N. Broadway
St. Louis, MO 63102

800.735.3853 Toll Free
314.231.1130 In Missouri
314.231.5074 Fax
www.dukemfg.com

Approval Stamp(s):

PROJECT INFORMATION:

PROJECT: _____
 ITEM: _____
 QUANTITY: _____

MODEL:

Slide-Ins - Slimline - Hot Food Electric - Sealed Wells

- ASI-1ESL-SW** 24-1/4"L x 16-11/16"W x 12-3/4"H
- ASI-2ESL-SW** 46-1/4"L x 6-11/16"W x 12-3/4"H
- ASI-3ESL-SW** 68-1/4"L x 6-11/16"W x 12-3/4"H

TOP RIM:

- Heavy gauge, 300 Series stainless steel
- 15/16" overhang on back and ends
- Operator's side turned down
- Reinforced rim
- Vinyl foam gasket as sealant
- Die-stamped openings - 12-1/16" x 20-1/16"

HEAT COMPARTMENTS:

- Watt element under each compartment
 - 750 watt, 120 Volt/1 Ph
 - 900 watt, 208 Volt/1 Ph
 - 1200 watt, 240 Volt/1 Ph
- 6-1/4" deep stainless steel liner, wet or dry operation
- Insulated bottom
- Individual open drains
- Individual thermostat controls and indicator lights
- Master switch and chrome knob guards

EXTERIOR HOUSING:

- Heavy gauge paint grip steel on one side and both ends
- Heavy gauge stainless steel operator's side

SHORT FORM SPECIFICATIONS:

Duke Slide-Ins - Slimline - Hot Food - Electric - Sealed Wells

Top rim to be constructed of heavy gauge, 300 Series stainless steel with 15/16" overhang on ends, 7/8" overhang on back and operator's side turned down. Rim to be reinforced with heavy gauge steel angle and provided with vinyl foam gasket as sealant with top surface. Top to have die-stamped openings, each measuring 12-1/16" (front to back) x 20-1/16". Heat compartments to be die-formed, 6-1/4" deep, of stainless steel and insulated on all four sides. Each compartment to have 750 watts @ 120 volts, 900 watts @ 208 volts or 1200 watts @ 240 volts, electric element fitted under warming compartment, above insulated bottom. Unit to be wired to operate on specified voltage, with single phase standard for hard wired in field only. Three phase available. Thermostat controls. Exterior to be of heavy gauge steel on one side and both ends. Operator's side of heavy gauge stainless steel.

SLIDE-INS - SLIMLINE - HOT FOOD - ELECTRIC - SEALED WELLS

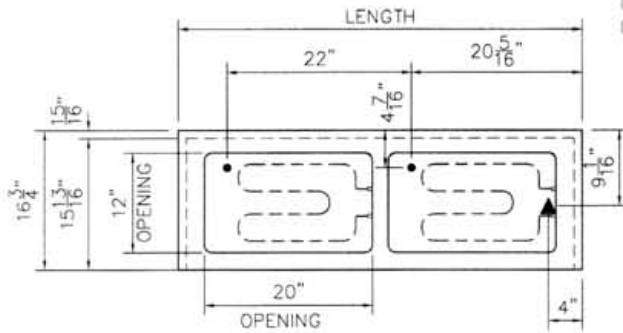
Catalog No. ASI-ELECHFSLIMSW

A.I.A. File No. 35-C-13

ASI-06

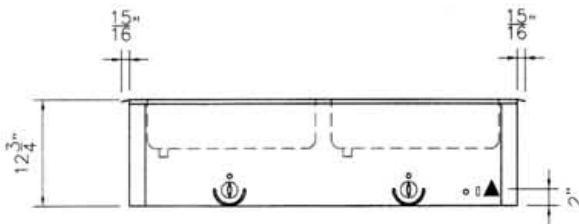
**SLIDE-INS - SLIMLINE - HOT FOOD
ELECTRIC - SEALED WELLS**

- **ASI-1ESL-SW** 24-1/4"L x 16-11/16"W x 12-3/4"H
- **ASI-2ESL-SW** 46-1/4"L x 16-11/16"W x 12-3/4"H
- **ASI-3ESL-SW** 68-1/4"L x 16-11/16"W x 12-3/4"H

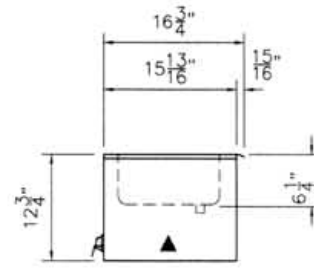
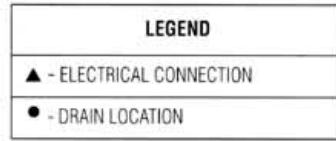


ASI-2ESL-SW UNIT SHOWN

TOP VIEW



FRONT VIEW



RIGHT SIDE VIEW

DIMENSIONS:

Freight Class: 100

Model	Length		Width		Height		Top Openings	Cutout Length		Cutout Width		Cube ft. crated	Weight	
	in.	cm	in.	cm	in.	cm		in.	cm	in.	cm		lbs.	kg
ASI-1ESL-SW	24-1/4	61.6	16-11/16	42.6	12-3/4	32.4	1	23	58.4	16	40.6	7.6	80	36.4
ASI-2ESL-SW	46-1/4	117.5	16-11/16	42.6	12-3/4	32.4	2	45	114.3	16	40.6	13.0	135	61.4
ASI-3ESL-SW	68-1/4	173.4	16-11/16	42.6	12-3/4	32.4	3	67	170.2	16	40.6	18.5	185	84.1

ELECTRICAL SPECIFICATIONS: (Consult factory for 3-phase electrical requirements and other options.)

Model	120 Volt/750 Watt		208 Volt/900 Watt		240 Volt/1200 Watt	
	watts	amps	watts	amps	watts	amps
ASI-1ESL-SW	750	6.3	900	4.4	1200	5.0
ASI-2ESL-SW	1500	12.5	1800	8.7	2400	10.0
ASI-3ESL-SW	2250	18.5	2700	13.0	3600	15.0



"Your Solutions Partner"

DUKE MANUFACTURING CO.
2305 N. Broadway
St. Louis, MO 63102

800.735.3853 Toll Free
314.231.1130 In Missouri
314.231.5074 Fax
www.dukemfg.com

12/01

Specifications subject to change

Printed in U.S.A.
©2001, Duke Manufacturing Co.